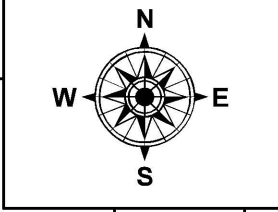
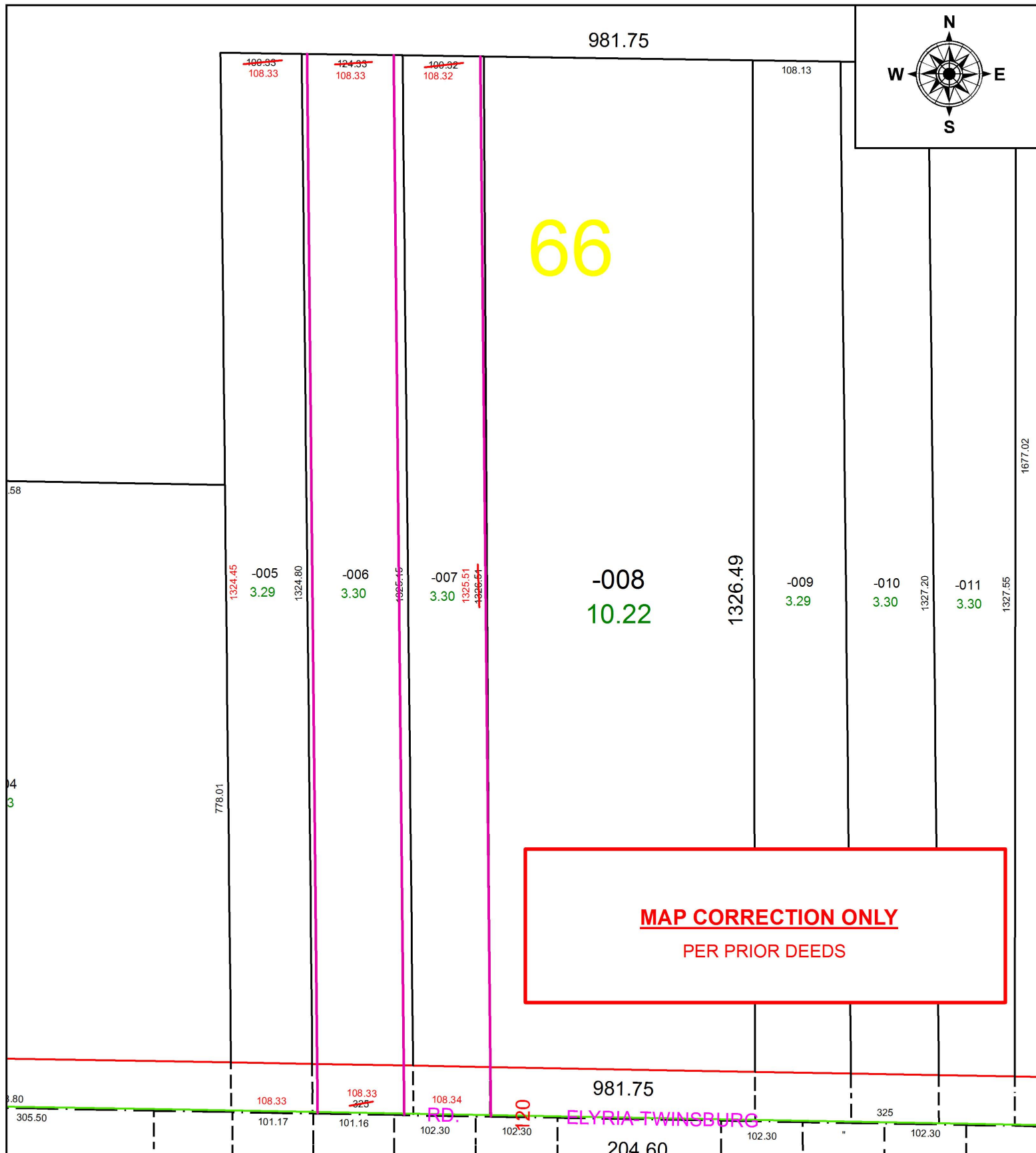


PARENT PARCEL: 11-00-066-000-005 THRU -007

CHILD PARCEL: XX-XX-XXX-XXX-XXX

STARTING POINT: INTERSECTION OF C/L OF S.R.82 AND WEST LINE OF O.L.66

17-03738-C



MAP CORRECTION ONLY
PER PRIOR DEEDS

SPLITS/DEEDS PROCESSED
LORAIN COUNTY TAX MAP DEPARTMENT
226 MIDDLE AVE. ELYRIA, OH

SURVEYED BY: I.L. DEAN
 CLOSURE: 1: 191,350
 MAP PAGE(S): 11-00-066
 APPROVED BY: RRM DATE: 9-11-17
 SCALE: 1" = 160 PRIOR INSTRUMENT: 20150539264