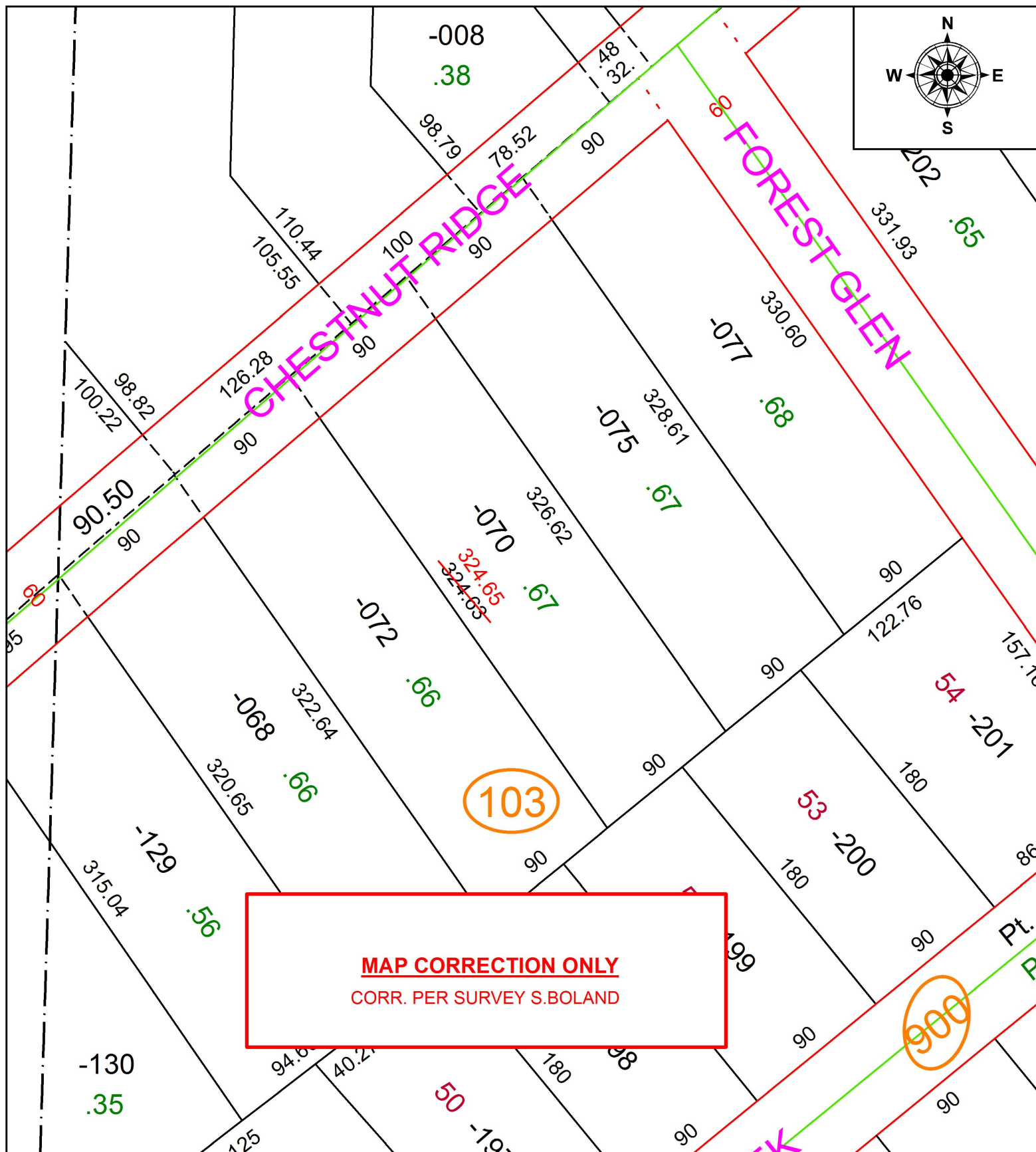


PARENT PARCEL: 07-00-014-103-070

CHILD PARCEL: XX-XX-XXX-XXX-XXX

STARTING POINT: INTERSECTION OF C/L OF CHESTNUT RIDGE RD. AND WEST LINE OF O.L. 14

17-03737-D



**SPLITS/DEEDS PROCESSED**  
 LORAIN COUNTY TAX MAP DEPARTMENT  
 226 MIDDLE AVE. ELYRIA, OH

SURVEYED BY: SEAN A. BOLAND  
 CLOSURE: 1: 96,636  
 MAP PAGE(S): 7-00-014  
 APPROVED BY: RRM DATE: 9-13-17  
 SCALE: 1" = 75' PRIOR INSTRUMENT: 20170643893