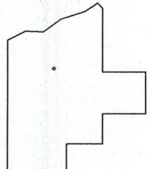
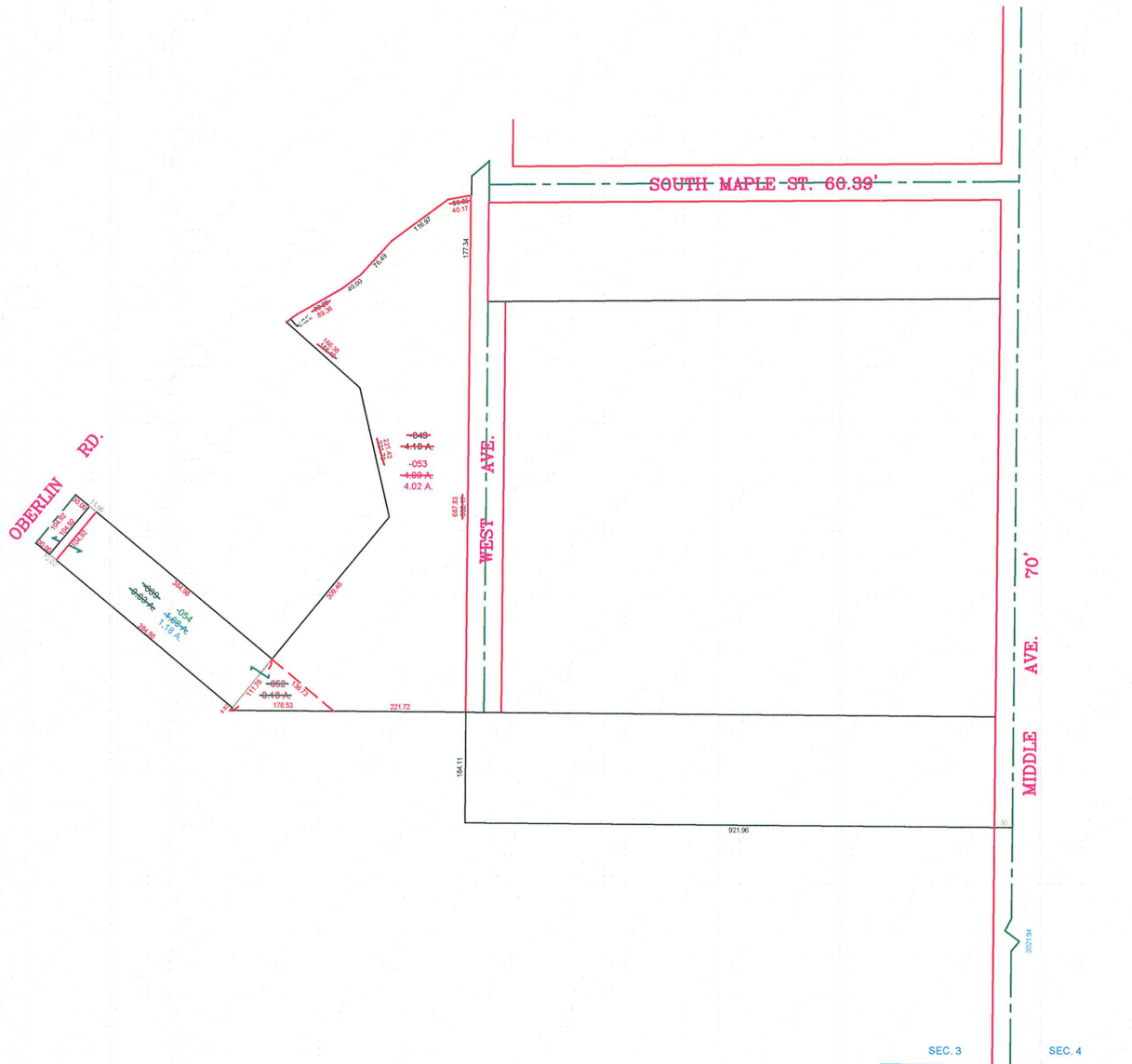


PARENT PARCEL: 10-00-003-120-009 & -049  
CHILD PARCEL: 10-00-003-120-052 THRU -054  
STARTING POINT: 1 1/2" I.P. FOUND AT THE S.E. CORNER OF SECTION 3

17-03736



SPLITS/DEEDS PROCESSED  
LORAIN COUNTY TAX MAP DEPARTMENT  
226 MIDDLE AVE. ELYRIA, OHIO

SURVEYED BY: STEVEN W. CLUTTER  
CLOSURE: 0.01 : 10,000  
MAP PAGE(S): 10-00-003  
APPROVED BY: TJS DATE: 10/30/17  
SCALE: 1" = 300' PRIOR INSTRUMENT: 1998-0522906