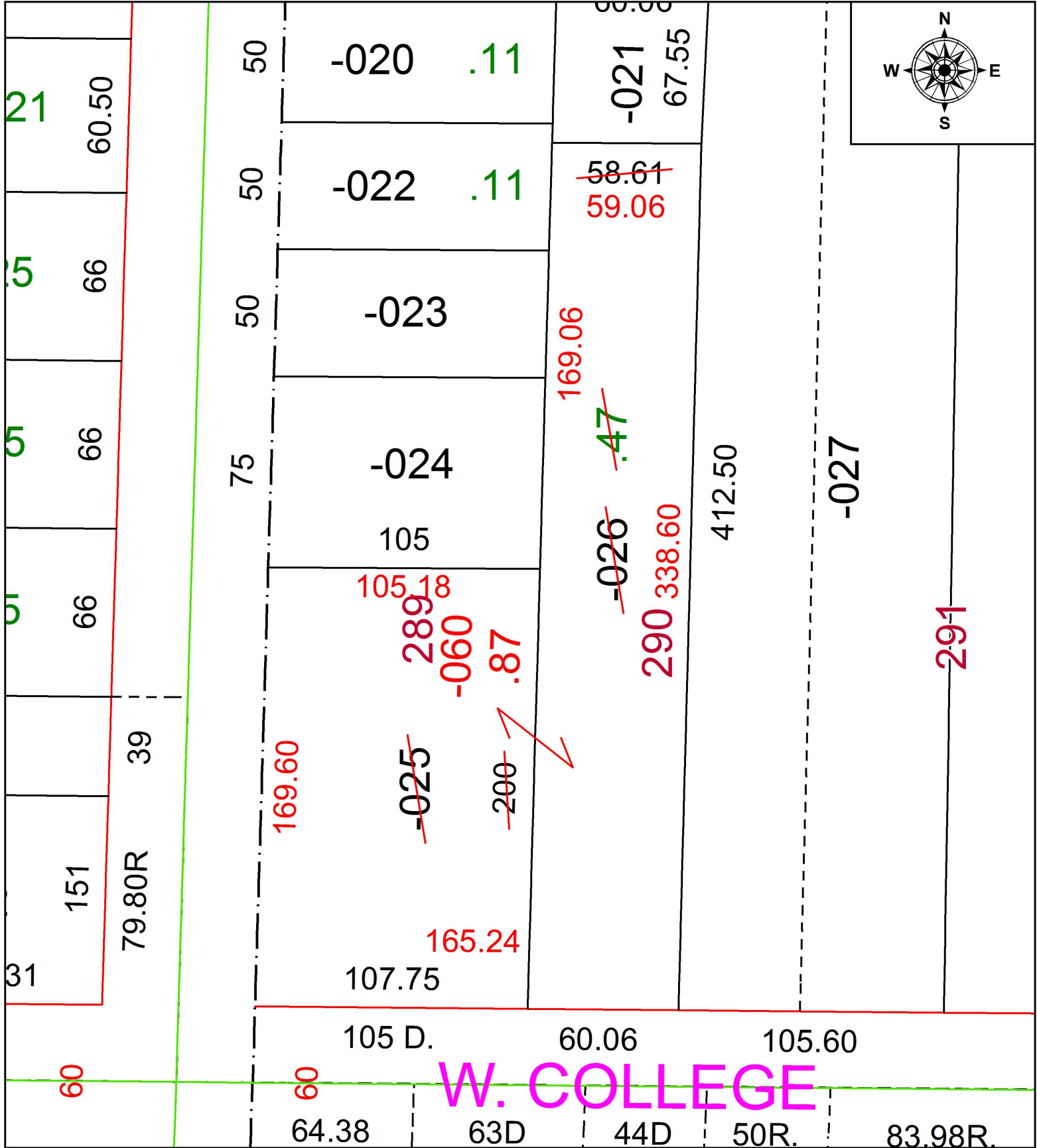


PARENT PARCEL: 09-00-085-101-025, -026

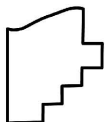
CHILD PARCEL: 09-00-085-101-060

STARTING POINT: INTERSECTION OF C/L OF W. COLLEGE ST. AND C/L OF N. PROSPECT ST.

17-03730



W. COLLEGE



SPLITS/DEEDS PROCESSED
 LORAIN COUNTY TAX MAP DEPARTMENT
 226 MIDDLE AVE. ELYRIA, OH

SURVEYED BY: THOMAS A. SIMON
 CLOSURE: 1: 404,559
 MAP PAGE(S): 9-00-085
 APPROVED BY: RRM DATE: 9-29-17
 SCALE: 1" = 50 PRIOR INSTRUMENT: OR 1160/122