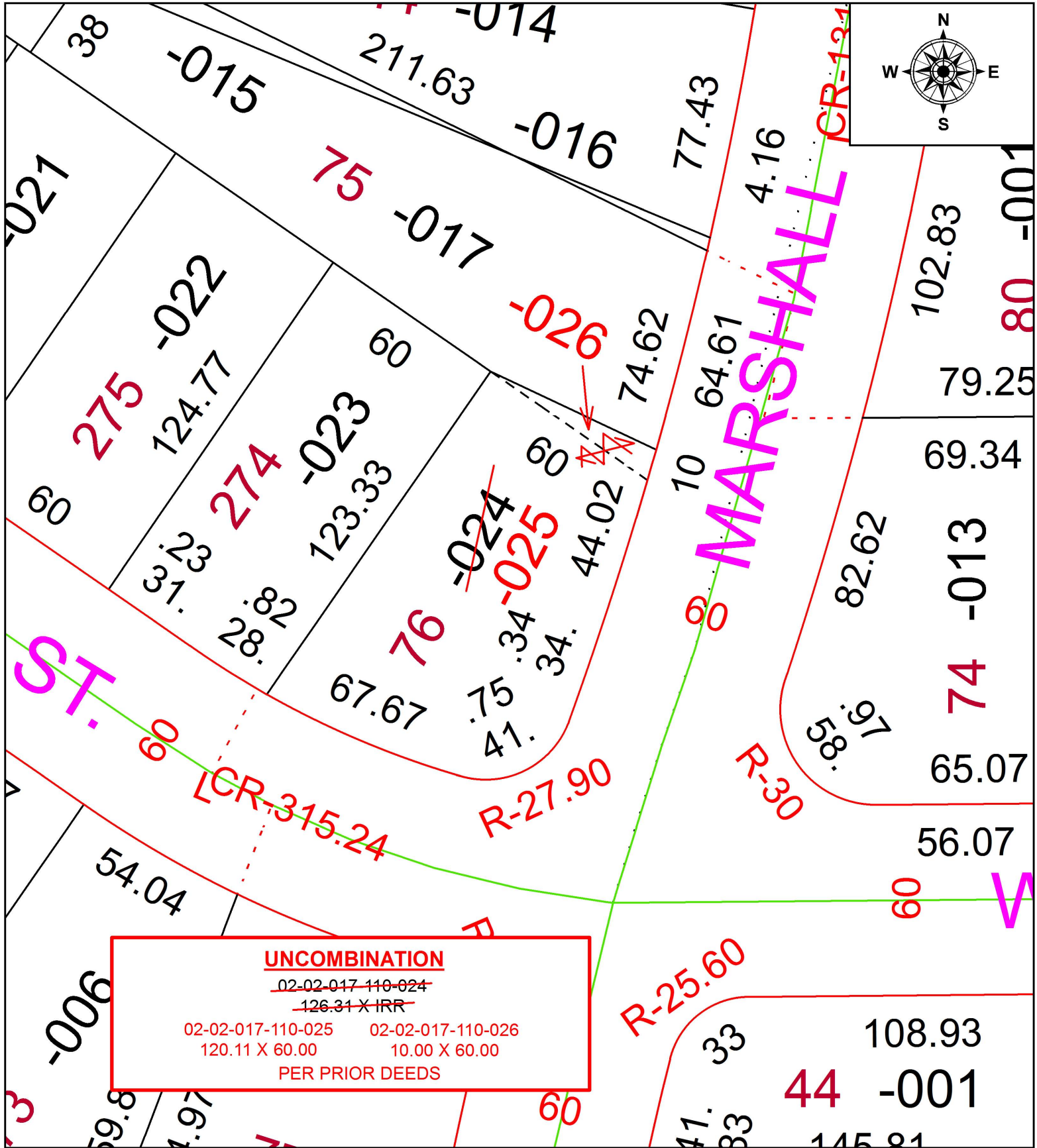


PARENT PARCEL: 02-02-017-110-024

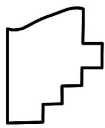
CHILD PARCEL: 02-02-017-110-025, -026

STARTING POINT: NORTHWEST CORNER OD S/L 76 IN SUNNY ACRES SUB. NO.2

17-03730-U



UNCOMBINATION
~~02-02-017-110-024~~
~~126.31 X IRR~~
 02-02-017-110-025 02-02-017-110-026
 120.11 X 60.00 10.00 X 60.00
 PER PRIOR DEEDS



SPLITS/DEEDS PROCESSED
 LORAIN COUNTY TAX MAP DEPARTMENT
 226 MIDDLE AVE. ELYRIA, OH

SURVEYED BY: RAY E. HOLLIS
 CLOSURE: N/A
 MAP PAGE(S): 2-02-017
 APPROVED BY: RRM DATE: 8-22-17
 SCALE: 1" = 40' PRIOR INSTRUMENT: N/A