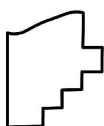
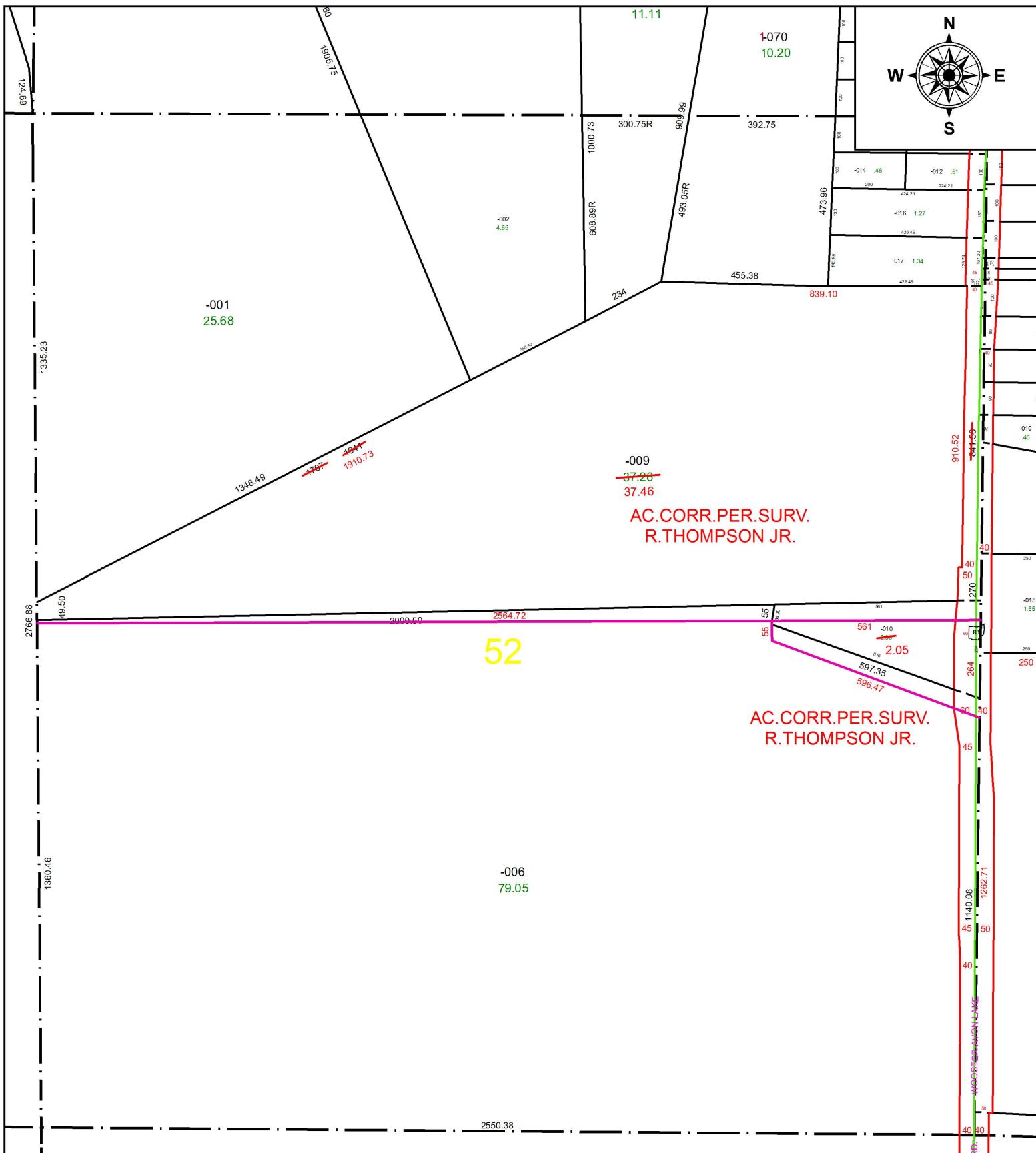


PARENT PARCEL: 11-00-052-000-009, -010

CHILD PARCEL: XX-XX-XXX-XXX-XXX

STARTING POINT: INTERSECTION OF C/L OF S.R.83 AND C/L OF COOLEY RD.

17-03729-D



SPLITS/DEEDS PROCESSED
 LORAIN COUNTY TAX MAP DEPARTMENT
 226 MIDDLE AVE. ELYRIA, OH

SURVEYED BY: RICHARD A. THOMPSON JR.

CLOSURE: 1: 1,308,092

MAP PAGE(S): 11-00-052

APPROVED BY: RRM **DATE:** 8-16-17

SCALE: 1" = 350 **PRIOR INSTRUMENT:** 20030899688