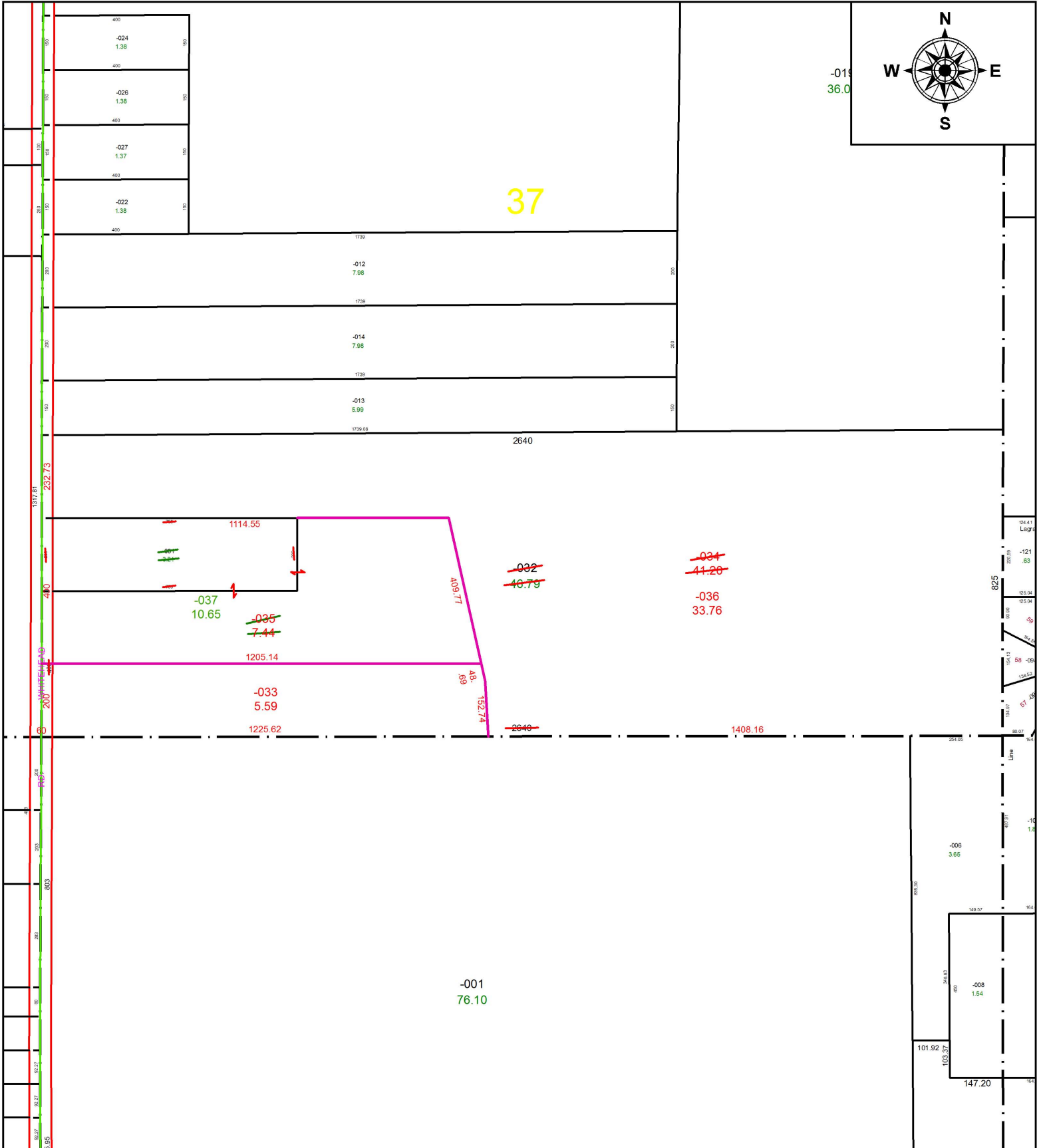


PARENT PARCEL: 15-00-037-000-031, -032

CHILD PARCEL: 15-00-037-000-033 THRU -037

STARTING POINT: SOUTHWEST CORNER OF O.L.37

17-03728



SPLITS/DEEDS PROCESSED
 LORAIN COUNTY TAX MAP DEPARTMENT
 226 MIDDLE AVE. ELYRIA, OH

SURVEYED BY: THOMAS A. SIMON

CLOSURE: 1: 772,934

MAP PAGE(S): 15-00-037

APPROVED BY: RRM DATE: 9-27-17

SCALE: 1" = 350 PRIOR INSTRUMENT: 20160610829