

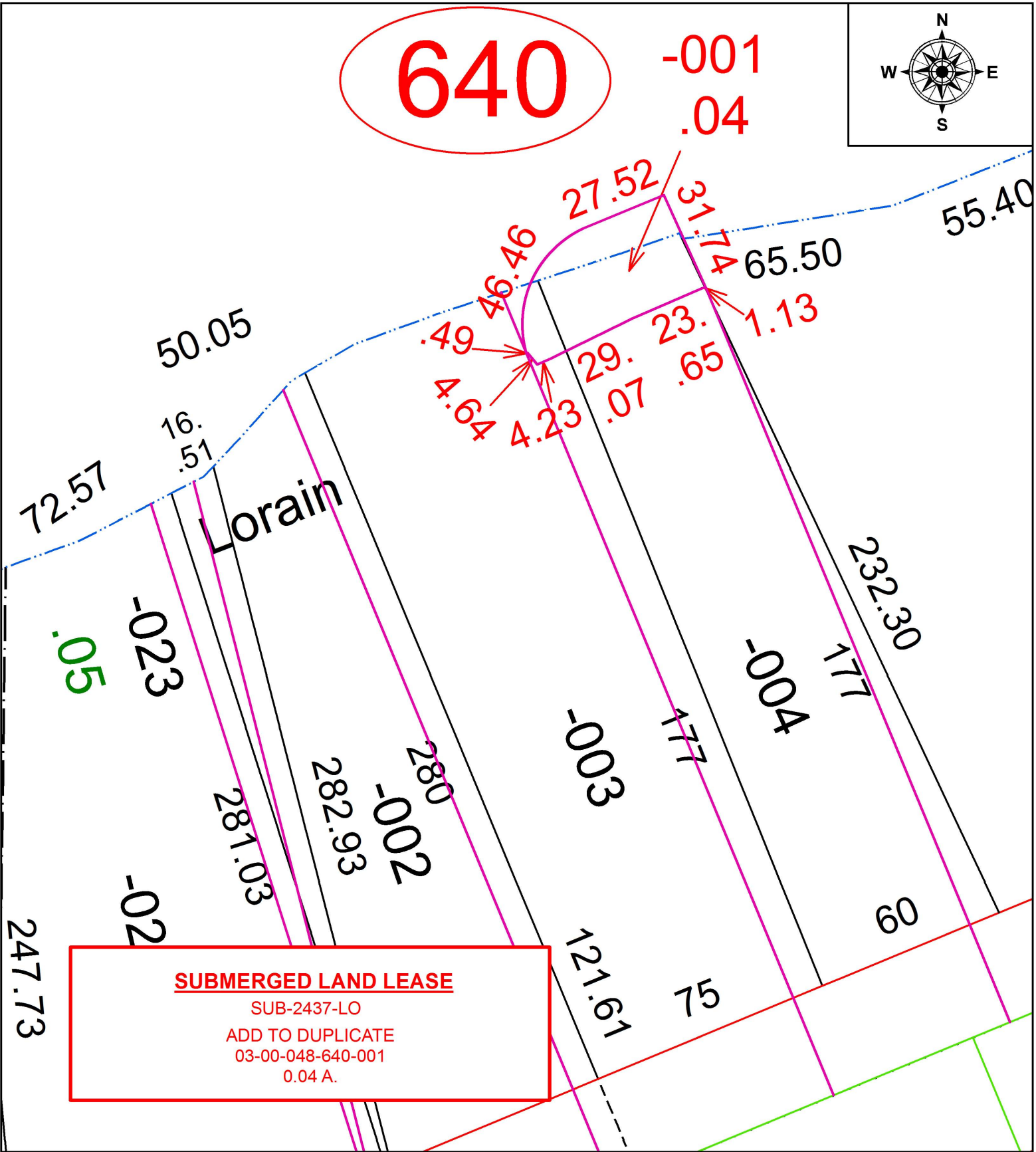
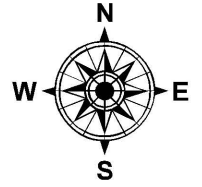
PARENT PARCEL: 03-00-048-101-004

CHILD PARCEL: 03-00-048-640-001

STARTING POINT: INTERSECTION OF C/L OF E. ERIE AVE. AND C/L OF NEBRASKA AVE.

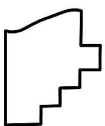
17-03724

640



SUBMERGED LAND LEASE

SUB-2437-LO
ADD TO DUPLICATE
03-00-048-640-001
0.04 A.



SPLITS/DEEDS PROCESSED
LORAIN COUNTY TAX MAP DEPARTMENT
226 MIDDLE AVE. ELYRIA, OH

SURVEYED BY: TREVOR A. BIXLER

CLOSURE: 1: 16,586

MAP PAGE(S): 3-00-048

APPROVED BY: RRM DATE: 9-11-17

SCALE: 1" = 40 PRIOR INSTRUMENT: 20120437867