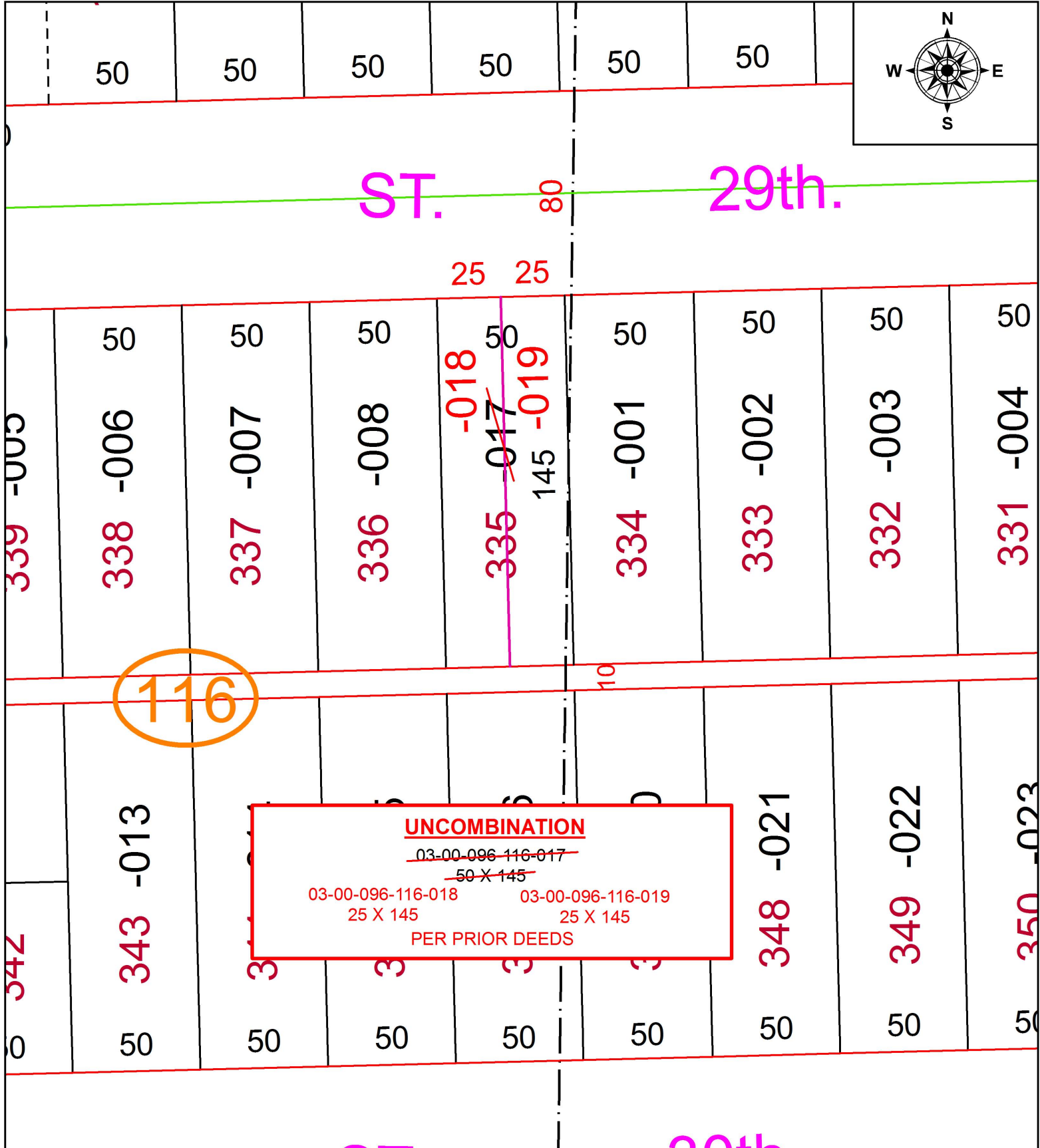


PARENT PARCEL: 03-00-096-116-017

CHILD PARCEL: 03-00-096-116-018, -019

STARTING POINT: NORTHWEST CORNER OF S/L 335 IN SHEFFIELD LAND AND IMPROVEMENT CO SUB. NO.1

17-03724-X



**UNCOMBINATION**  
~~03-00-096-116-017~~  
~~50 X 145~~  
 03-00-096-116-018      03-00-096-116-019  
 25 X 145                      25 X 145  
 PER PRIOR DEEDS



**SPLITS/DEEDS PROCESSED**  
 LORAIN COUNTY TAX MAP DEPARTMENT  
 226 MIDDLE AVE. ELYRIA, OH

SURVEYED BY: RAY E. HOLLIS  
 CLOSURE: N/A  
 MAP PAGE(S): 3-00-096  
 APPROVED BY: RRM      DATE: 8-8-17  
 SCALE: 1" = 50'      PRIOR INSTRUMENT: 20160574839