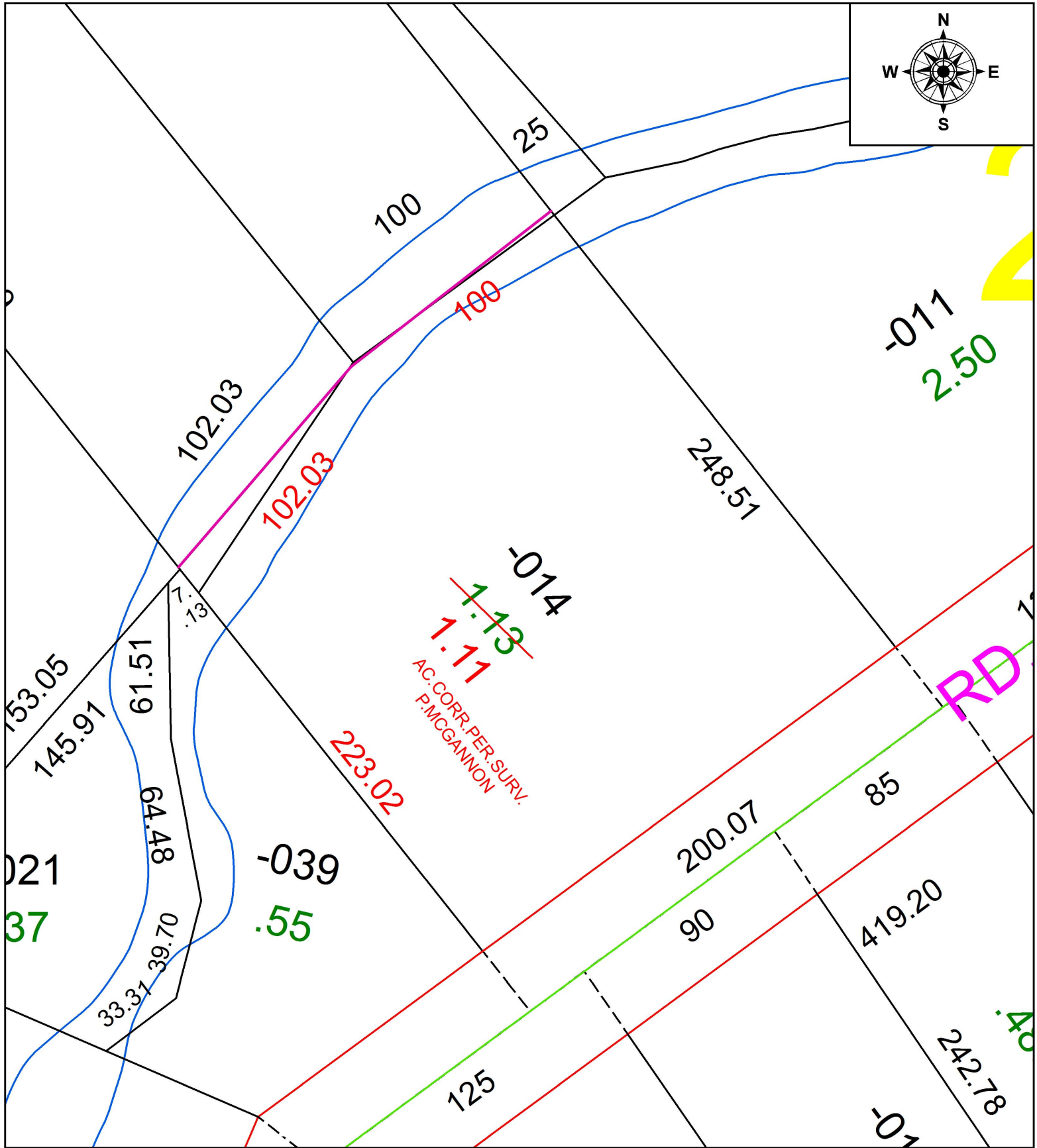


PARENT PARCEL: 05-00-021-102-014

CHILD PARCEL: XX-XX-XXX-XXX-XXX

17-03722-A

STARTING POINT: INTERSECTION OF COOPER FOSTER PARK RD. AND C/L OF NORTH MAIN ST



AC. CORR. PER. SURV.
P. MCGANNON



SPLITS/DEEDS PROCESSED
LORAIN COUNTY TAX MAP DEPARTMENT
226 MIDDLE AVE. ELYRIA, OH

SURVEYED BY: PATRICK A, MCGANNON
CLOSURE: 1: 519,112
MAP PAGE(S): 5-00-021
APPROVED BY: RRM DATE: 8-7-17
SCALE: 1" = 50 PRIOR INSTRUMENT: 20120431226