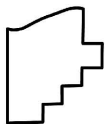
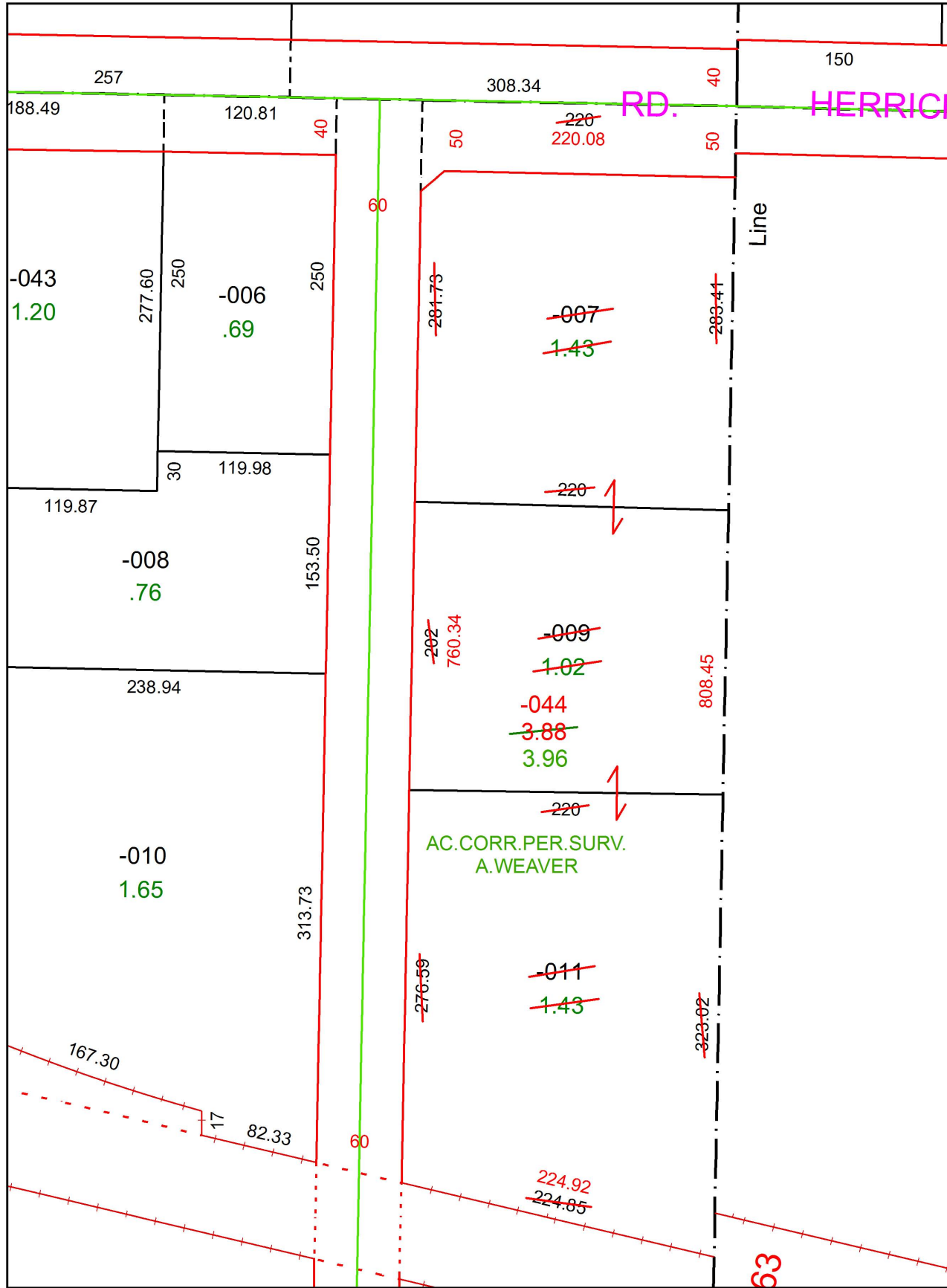
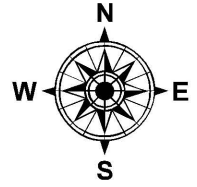


PARENT PARCEL: 18-00-034-000-007, -009, -011

CHILD PARCEL: 18-00-034-000-044

STARTING POINT: INTERSECTION OF C/L OF S.R.18 AND EAST LINE OF O.L.34

17-03721



**SPLITS/DEEDS PROCESSED**  
LORAIN COUNTY TAX MAP DEPARTMENT  
226 MIDDLE AVE. ELYRIA, OH

SURVEYED BY: ADAM E. WEAVER  
CLOSURE: 1: 882,963  
MAP PAGE(S): 18-00-034  
APPROVED BY: RRM DATE: 9-12-17  
SCALE: 1" = 100 PRIOR INSTRUMENT: 20000724714