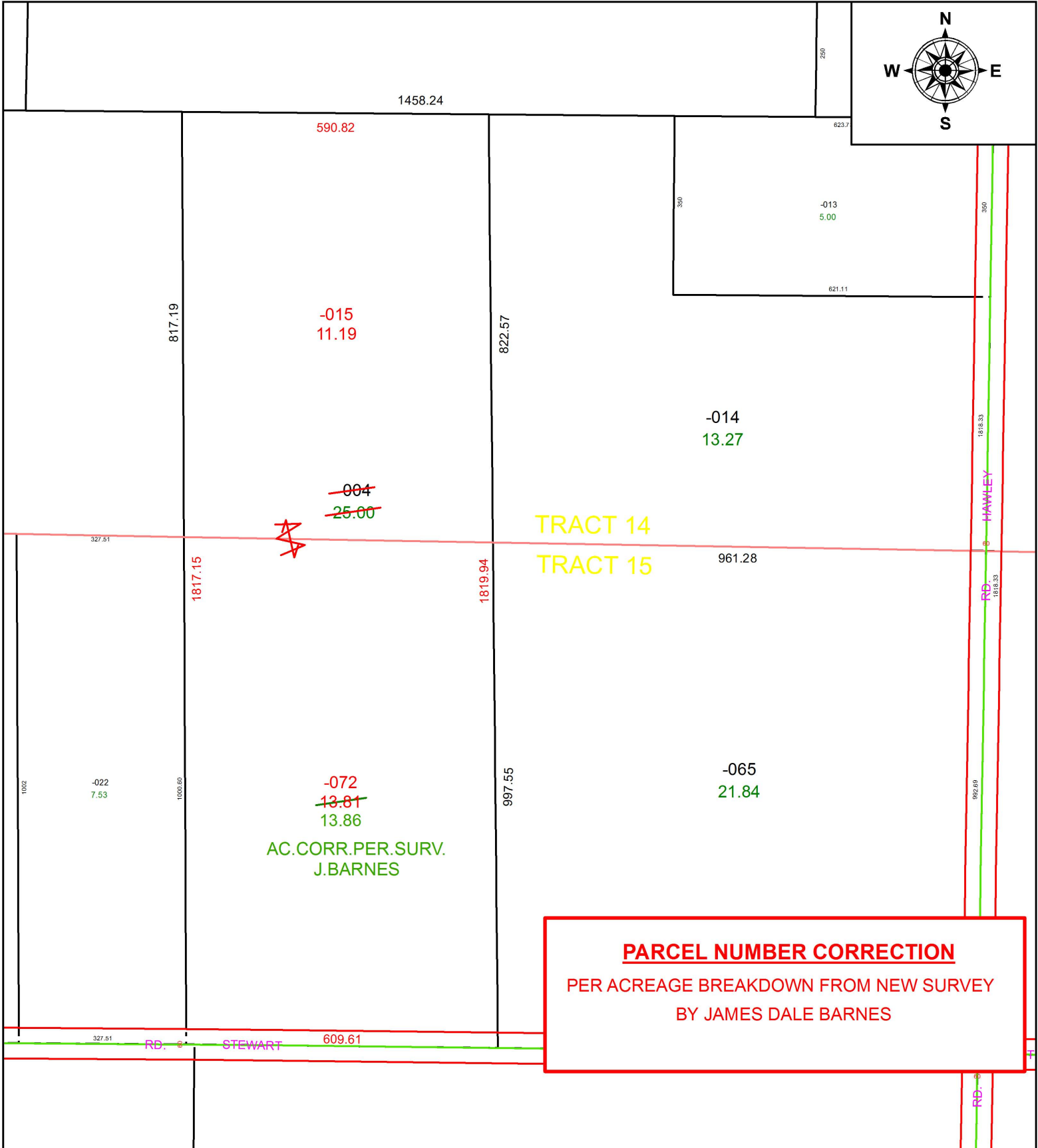


PARENT PARCEL: 21-14-000-000-004

CHILD PARCEL: 21-14-000-000-015, 21-15-000-000-072

STARTING POINT: INTERSECTION OF C/L OF STEWART RD. AND C/L OF HAWLEY RD.

17-03720-D



PARCEL NUMBER CORRECTION
PER ACREAGE BREAKDOWN FROM NEW SURVEY
BY JAMES DALE BARNES



SPLITS/DEEDS PROCESSED
LORAIN COUNTY TAX MAP DEPARTMENT
226 MIDDLE AVE. ELYRIA, OH

SURVEYED BY: JAMES DALE BARNES
CLOSURE: 1: 518,501
MAP PAGE(S): 21-G
APPROVED BY: RRM DATE: 8-2-17
SCALE: 1" = 250 PRIOR INSTRUMENT: 20140511089