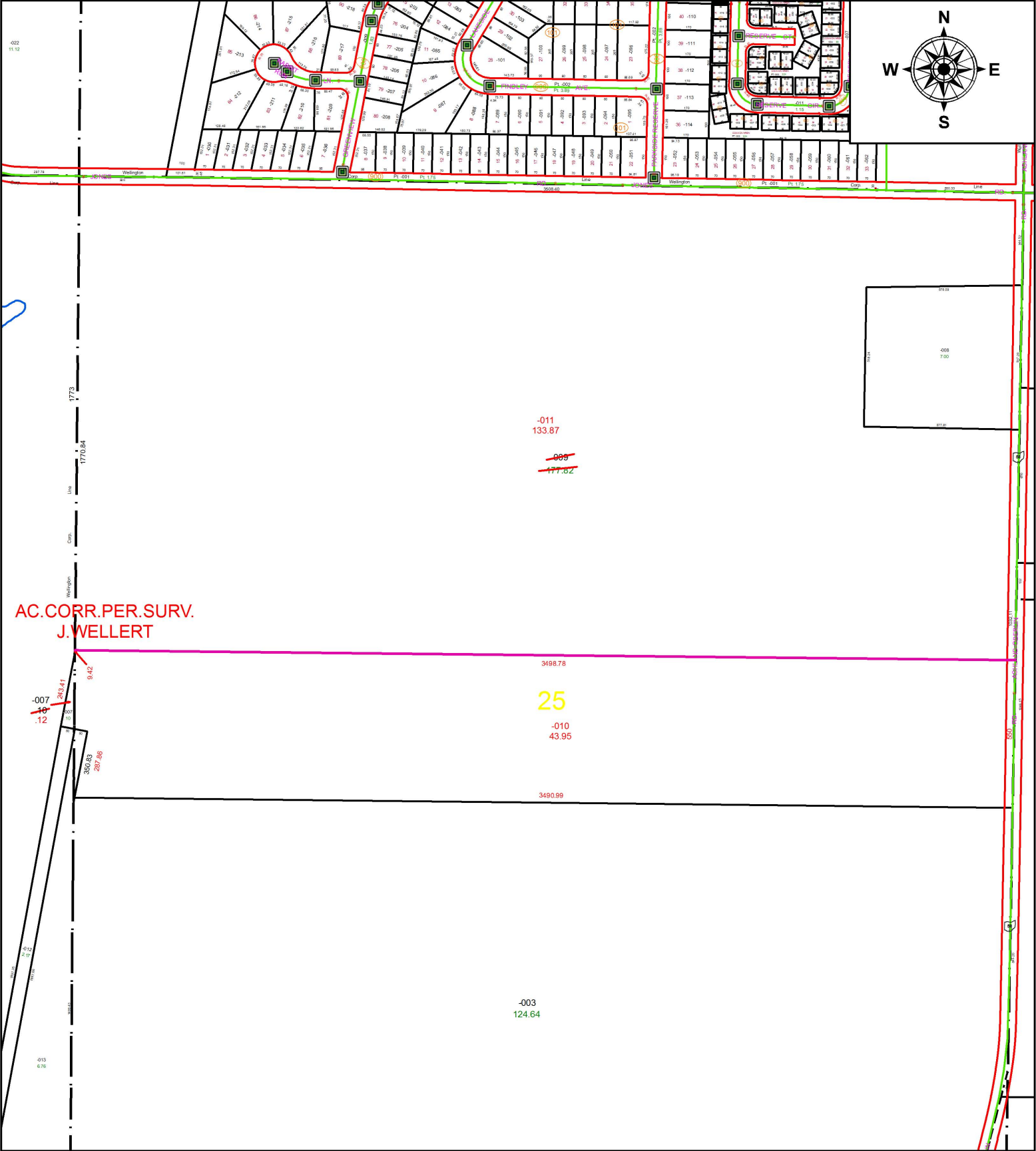


PARENT PARCEL: 18-00-025-000-009, 18-00-036-000-007
CHILD PARCEL: 18-00-025-000-010, -011, 18-00-036-000-007
STARTING POINT: NORTHWEST CORNER OF O.L.25

17-03719

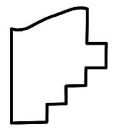


AC. CORR. PER. SURV.
J. WELLERT

-011
133.87
~~009~~
~~177.62~~

3498.78
25
-010
43.95

-003
124.64



SPLITS/DEEDS PROCESSED
LORAIN COUNTY TAX MAP DEPARTMENT
226 MIDDLE AVE. ELYRIA, OH

SURVEYED BY: JAMES D. WELLERT
CLOSURE: 1: 836,551
MAP PAGE(S): 18-00-025
APPROVED BY: RRM DATE: 8-25-17
SCALE: 1" = 475 PRIOR INSTRUMENT: 20170625455