

PARENT PARCEL: 06-25-031-114-007

CHILD PARCEL: XX-XX-XXX-XXX-XXX

STARTING POINT: SOUTHWEST CORNER OF S/L 15 IN ROSEALEE ADD.(VOL.16 PG.39)

17-03718-D



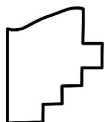
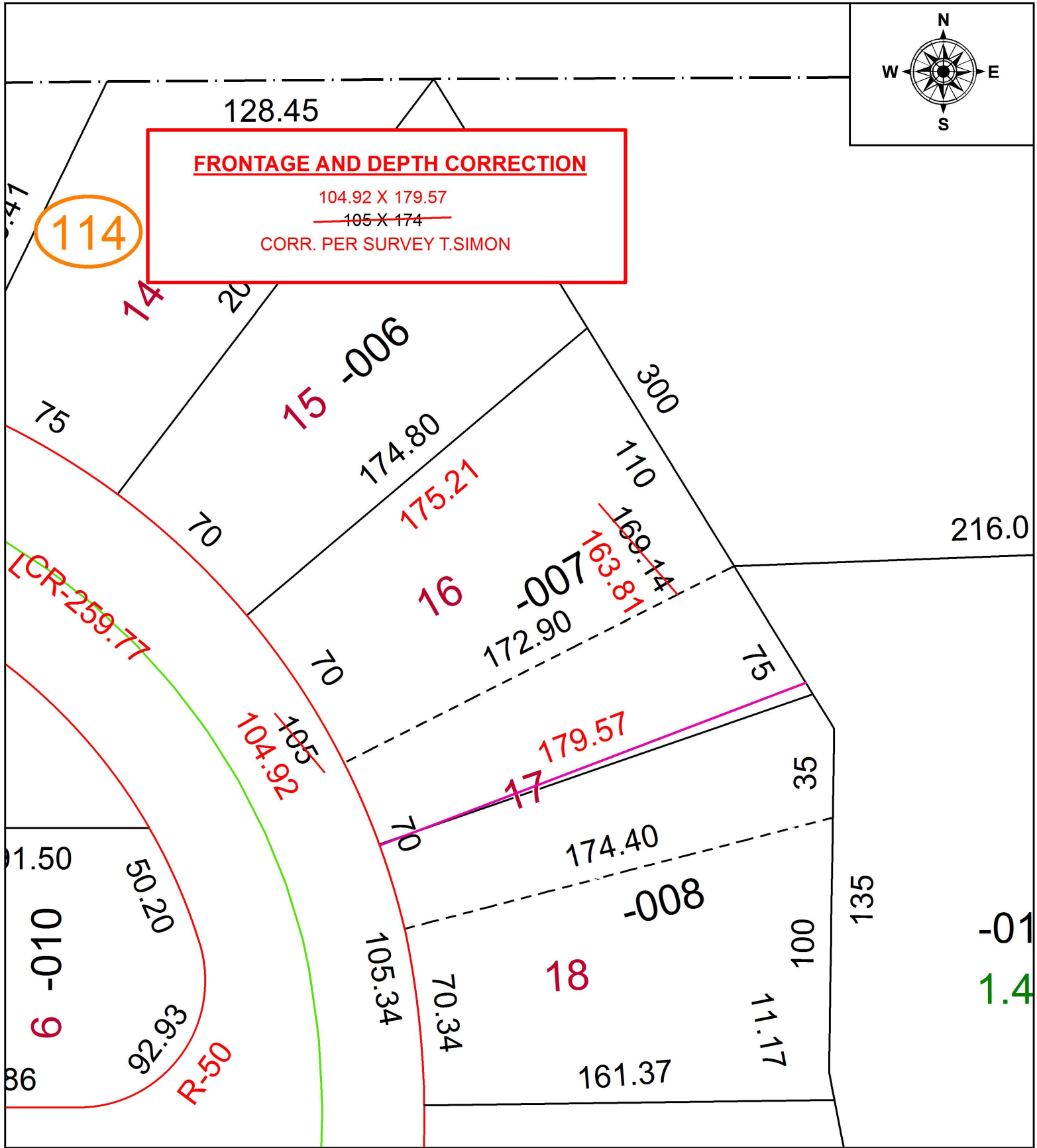
FRONTAGE AND DEPTH CORRECTION

104.92 X 179.57

~~105 X 174~~

CORR. PER SURVEY T.SIMON

114



SPLITS/DEEDS PROCESSED

LORAIN COUNTY TAX MAP DEPARTMENT
226 MIDDLE AVE. ELYRIA, OH

SURVEYED BY: THOMAS A. SIMON

CLOSURE: 1: 93,197

MAP PAGE(S): 6-70

APPROVED BY: RRM DATE: 8-1-17

SCALE: 1" = 50 PRIOR INSTRUMENT: 20150535571