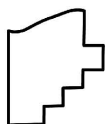
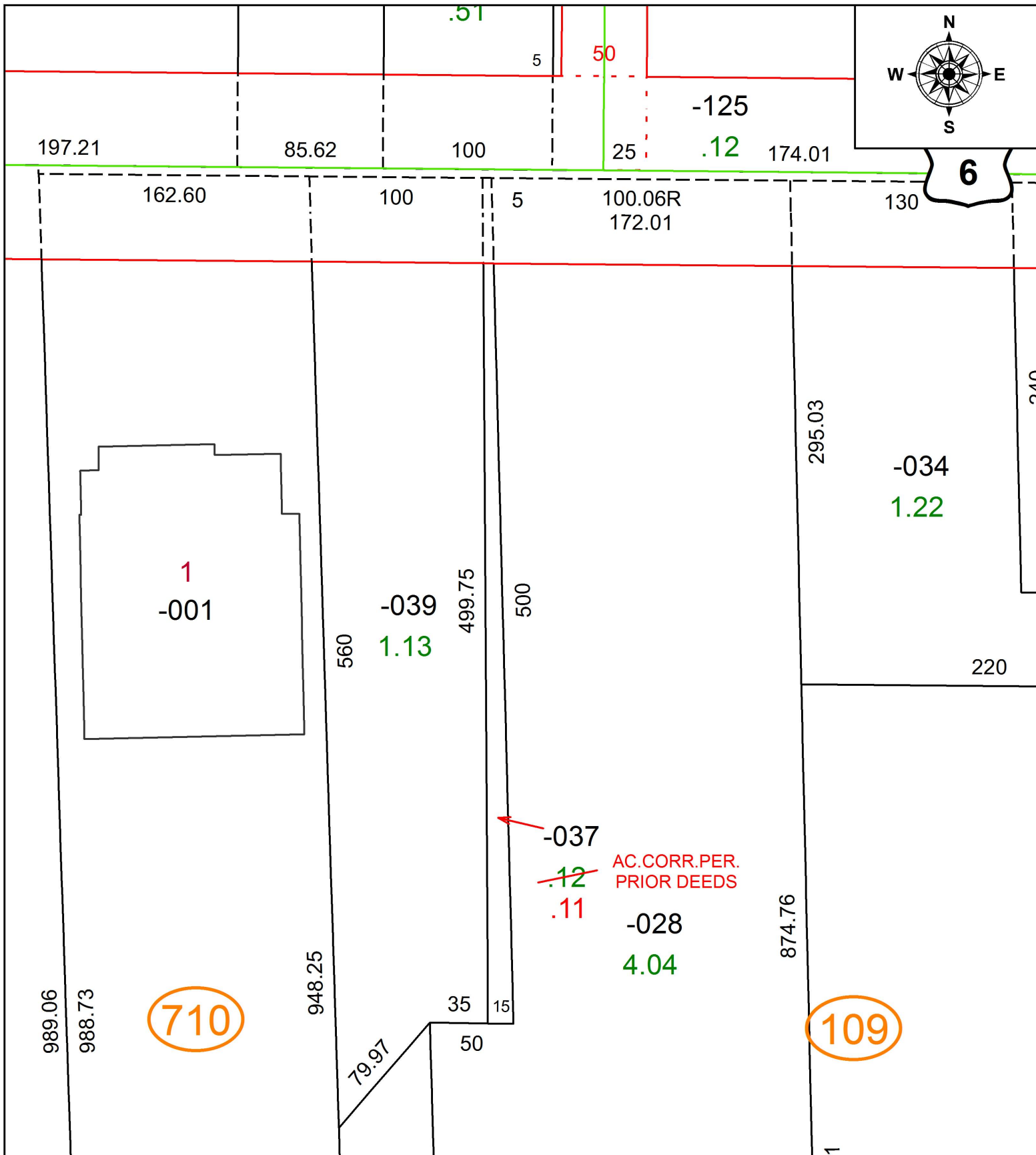


PARENT PARCEL: 01-00-001-109-037

CHILD PARCEL: XX-XX-XXX-XXX-XXX

STARTING POINT: INTERSECTION OF C/L OF LIBERTY AVE. AND C/L OF SALEM DR.

17-03716-A



SPLITS/DEEDS PROCESSED
LORAIN COUNTY TAX MAP DEPARTMENT
226 MIDDLE AVE. ELYRIA, OH

SURVEYED BY:	N/A
CLOSURE:	1: 1,038,699
MAP PAGE(S):	1-00-001
APPROVED BY:	RRM DATE: 8-1-17
SCALE:	1" = 75' PRIOR INSTRUMENT: 20170636972