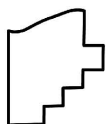
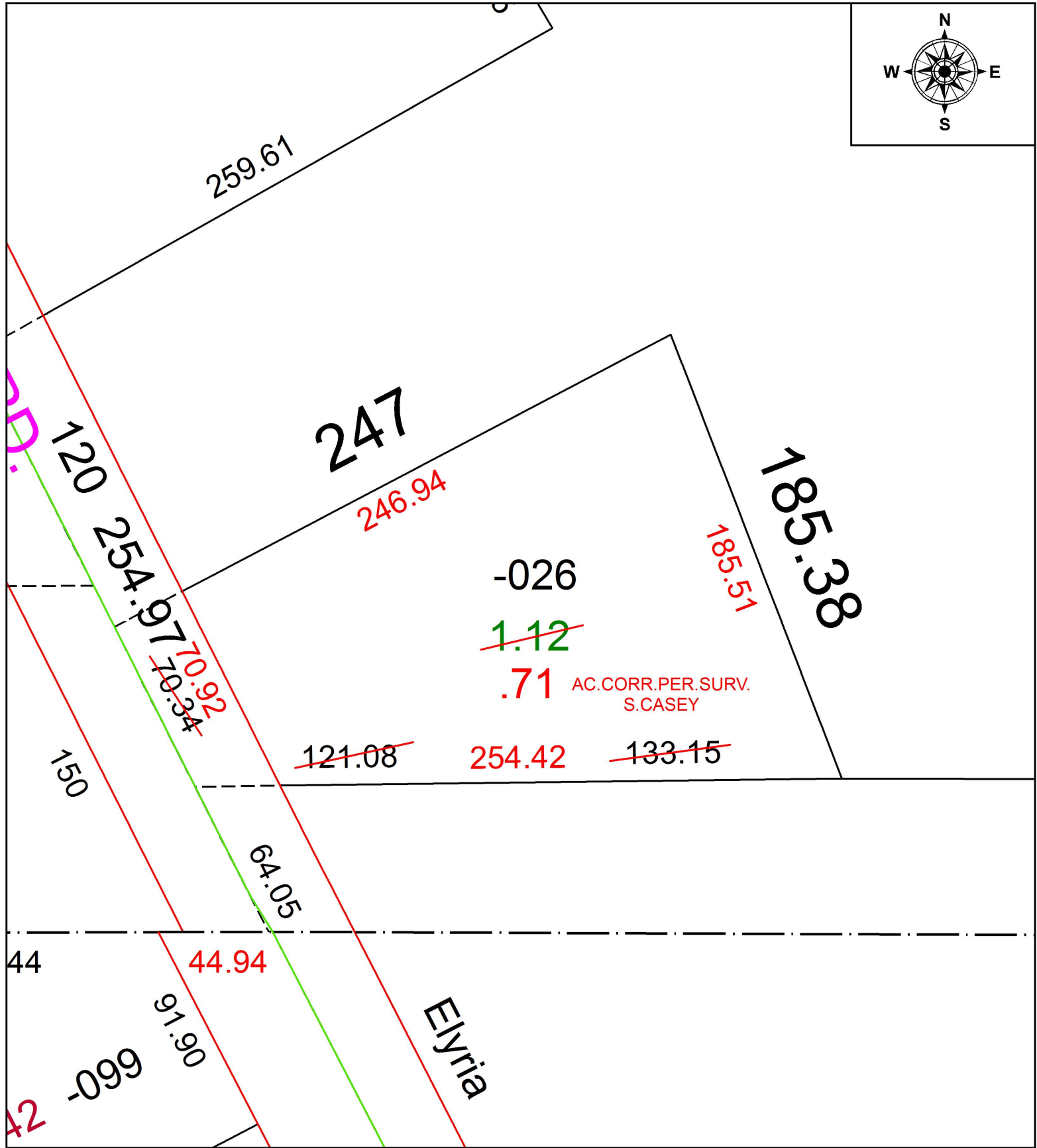
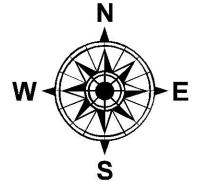


PARENT PARCEL: 06-24-005-000-026

CHILD PARCEL: XX-XX-XXX-XXX-XXX

STARTING POINT: INTERSECTION OF C/L OF MURRAY RIDGE RD. AND SOUTH LINE OF O.L.5

17-03715-D



SPLITS/DEEDS PROCESSED
 LORAIN COUNTY TAX MAP DEPARTMENT
 226 MIDDLE AVE. ELYRIA, OH

SURVEYED BY: SCOTT J. CASEY

CLOSURE: 1: 141,647

MAP PAGE(S): 6-131

APPROVED BY: RRM DATE: 7-31-17

SCALE: 1" = 50 PRIOR INSTRUMENT: 20030902178