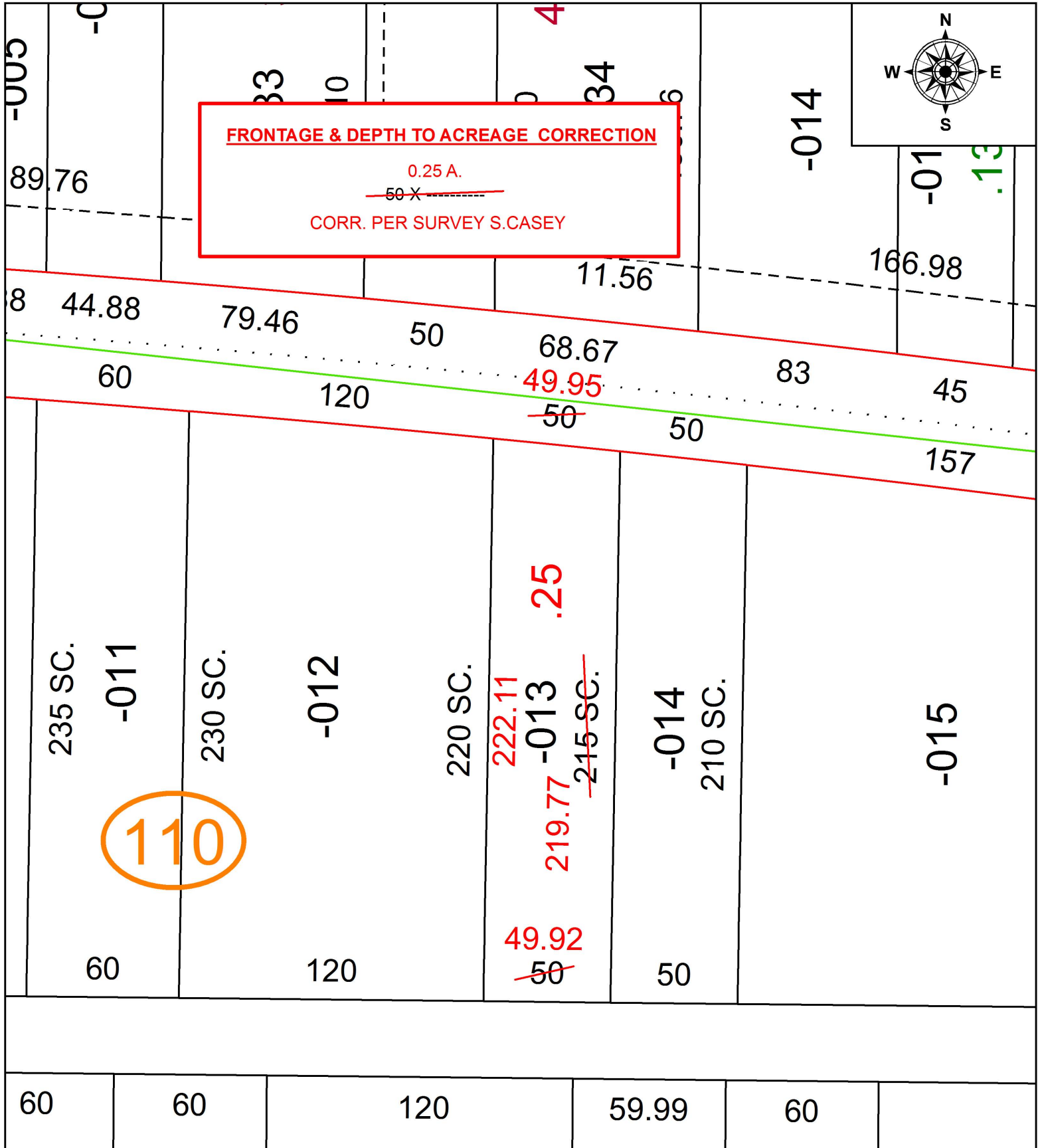


PARENT PARCEL: 09-00-096-110-013

CHILD PARCEL: XX-XX-XXX-XXX-XXX

STARTING POINT: INTERSECTION OF C/L OF S.PARK ST. AND C/L OF GRAFTON ST.

17-03714-D



SPLITS/DEEDS PROCESSED
LORAIN COUNTY TAX MAP DEPARTMENT
226 MIDDLE AVE. ELYRIA, OH

SURVEYED BY: SCOTT J. CASEY
 CLOSURE: 1: 117,298
 MAP PAGE(S): 9-00-096
 APPROVED BY: RRM DATE: 7-28-17
 SCALE: 1" = 50 PRIOR INSTRUMENT: 20060177926