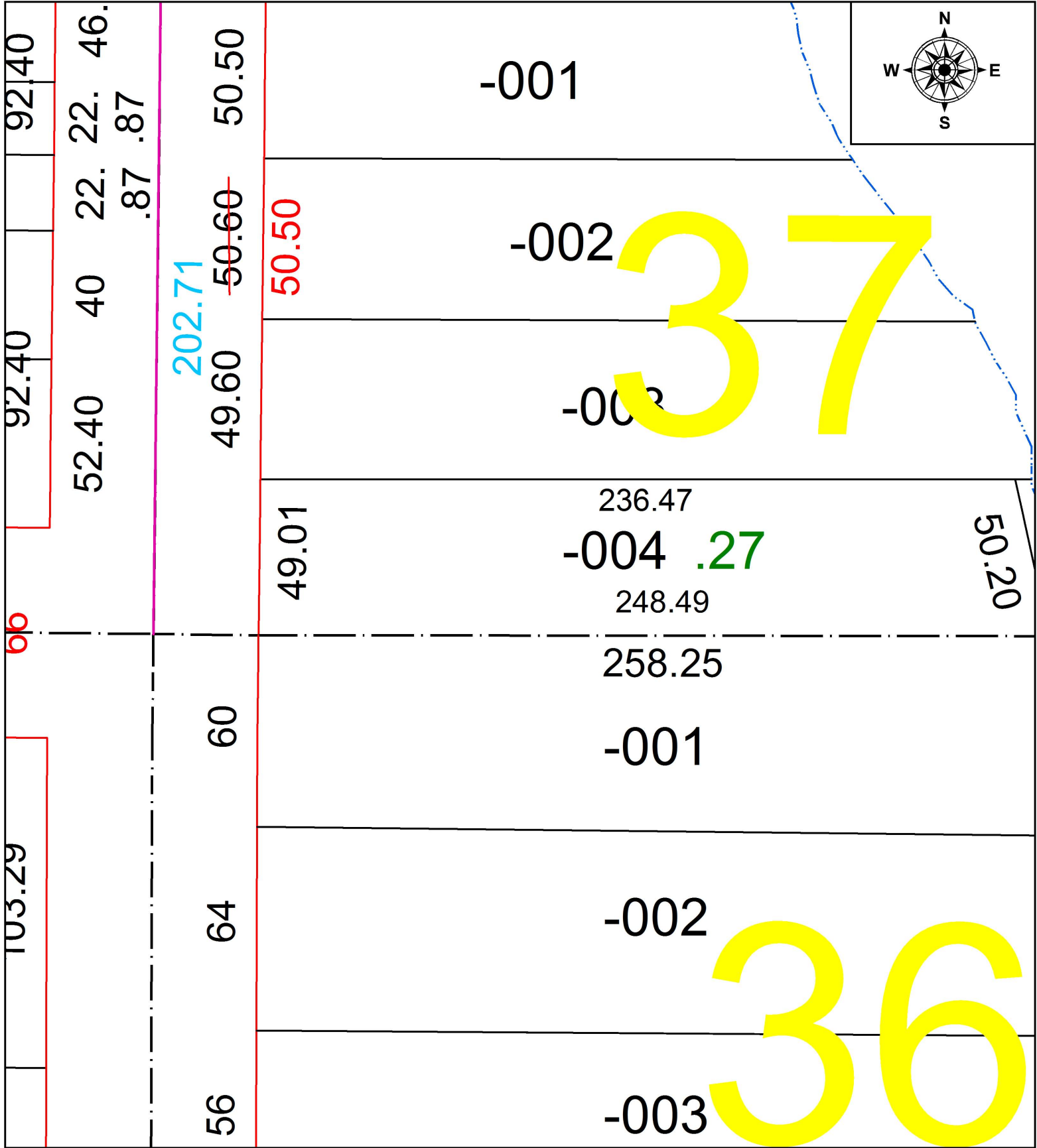


PARENT PARCEL: 06-26-037-000-002

CHILD PARCEL: XX-XX-XXX-XXX-XXX

STARTING POINT: WEST LINE OF LOT 6

17-03713-C



**SPLITS/DEEDS PROCESSED**  
 LORAIN COUNTY TAX MAP DEPARTMENT  
 226 MIDDLE AVE. ELYRIA, OH

SURVEYED BY: NA  
 CLOSURE: NA  
 MAP PAGE(S): 06-26-037  
 APPROVED BY: TJS DATE: 7/27/17  
 SCALE: 1" = 40' PRIOR INSTRUMENT: 2011-0394164