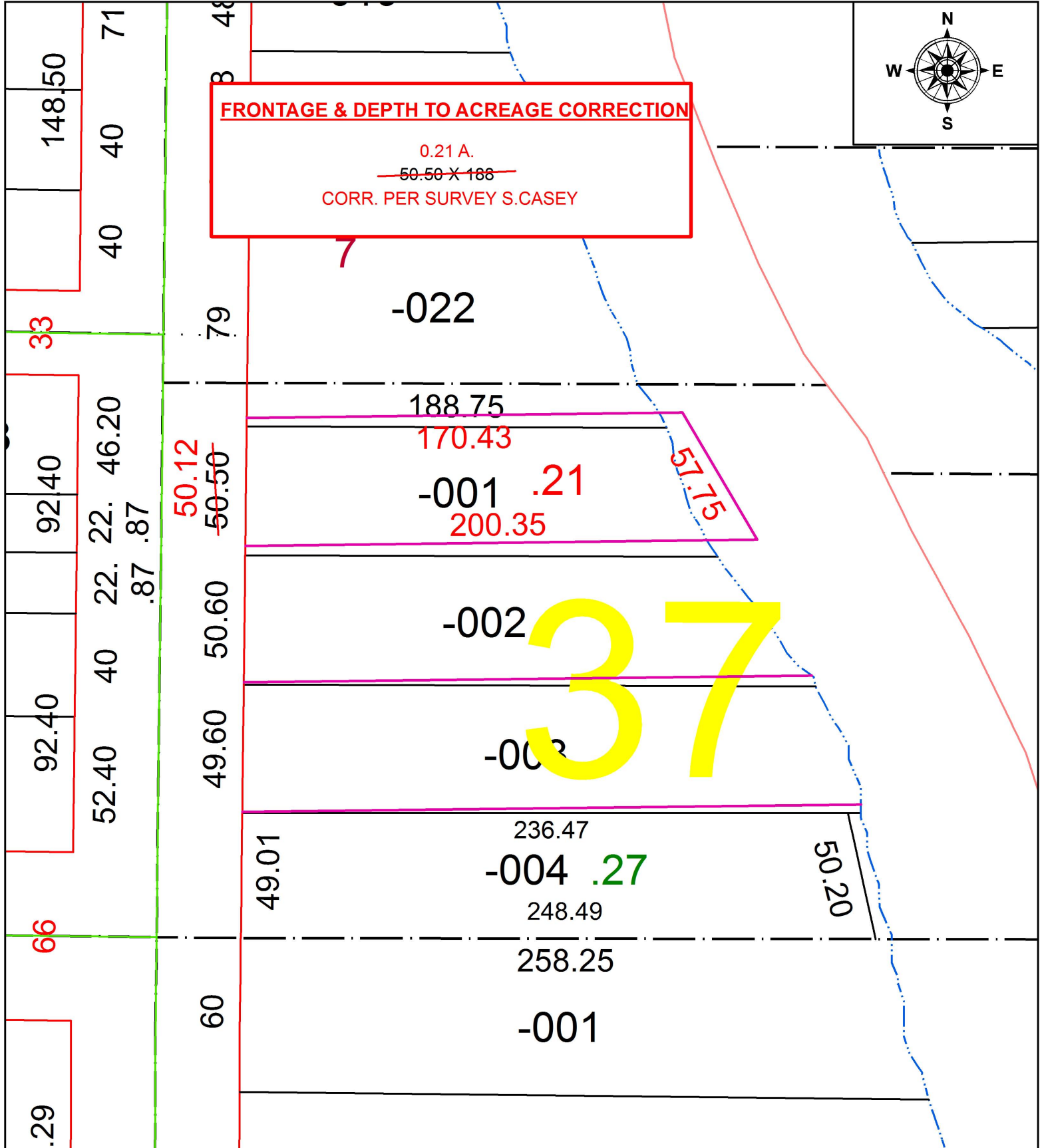


PARENT PARCEL: 06-26-037-000-001

CHILD PARCEL: XX-XX-XXX-XXX-XXX

STARTING POINT: INTERSECTION OF C/L OF E. 6TH ST. AND C/L OF EAST AVE.

17-03712-A



SPLITS/DEEDS PROCESSED
 LORAIN COUNTY TAX MAP DEPARTMENT
 226 MIDDLE AVE. ELYRIA, OH

SURVEYED BY: SCOTT J. CASEY
 CLOSURE: 1: 51,167
 MAP PAGE(S): 6-120
 APPROVED BY: RRM DATE: 7-27-17
 SCALE: 1" = 50 PRIOR INSTRUMENT: 20170621125