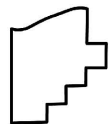
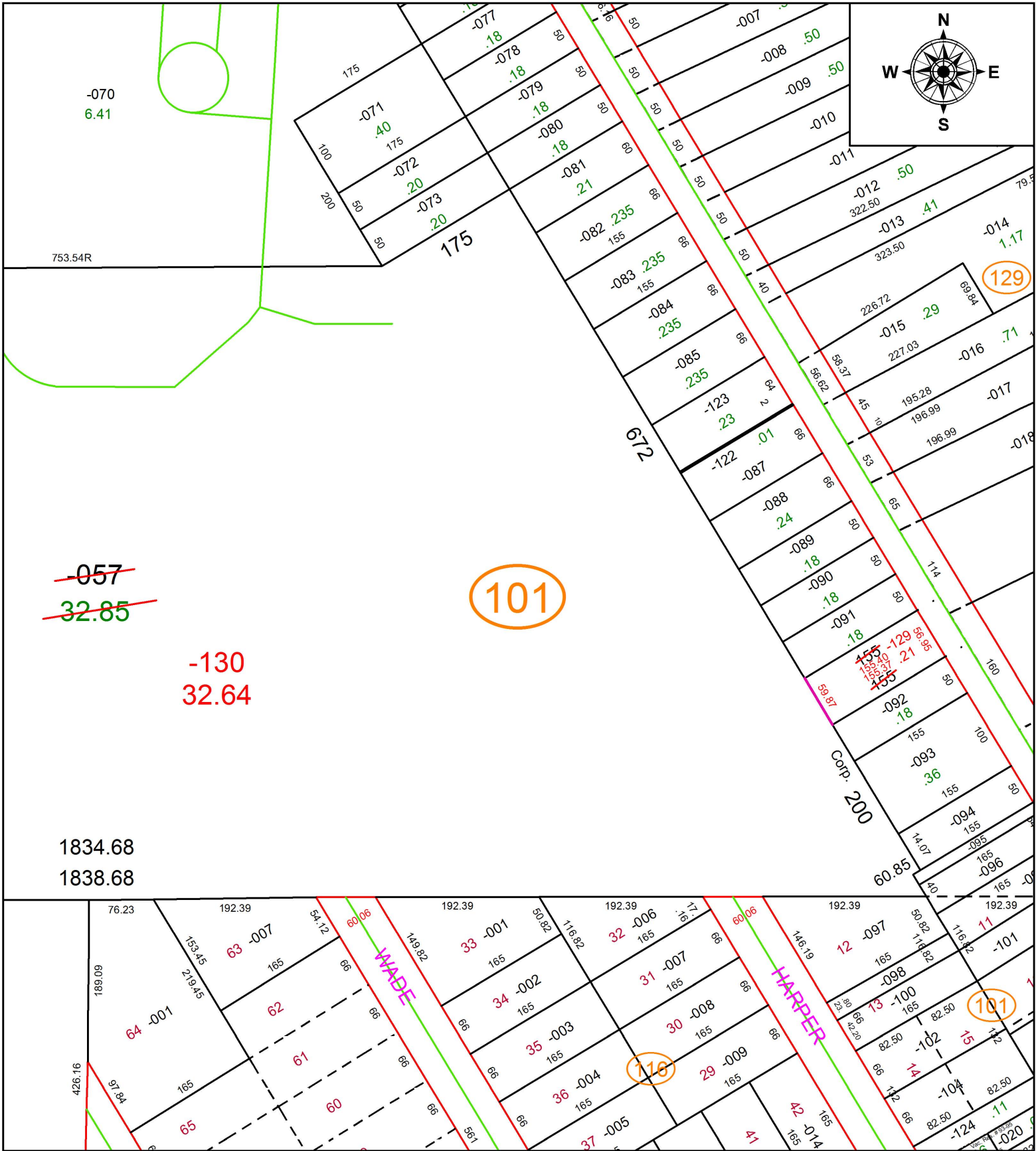


PARENT PARCEL: 10-00-004-101-057

CHILD PARCEL: 10-00-004-101-129, -130

17-03711

STARTING POINT: INTERSECTION OF SOUTH LINE OF 16TH ST. AND WEST LINE OF EAST AVE.



SPLITS/DEEDS PROCESSED
 LORAIN COUNTY TAX MAP DEPARTMENT
 226 MIDDLE AVE. ELYRIA, OH

SURVEYED BY: JAMES DALE BARNES

CLOSURE: 1: 71,040

MAP PAGE(S): 10-00-004

APPROVED BY: RRM **DATE:** 8-10-17

SCALE: 1" = 150 **PRIOR INSTRUMENT:** DV 810/88