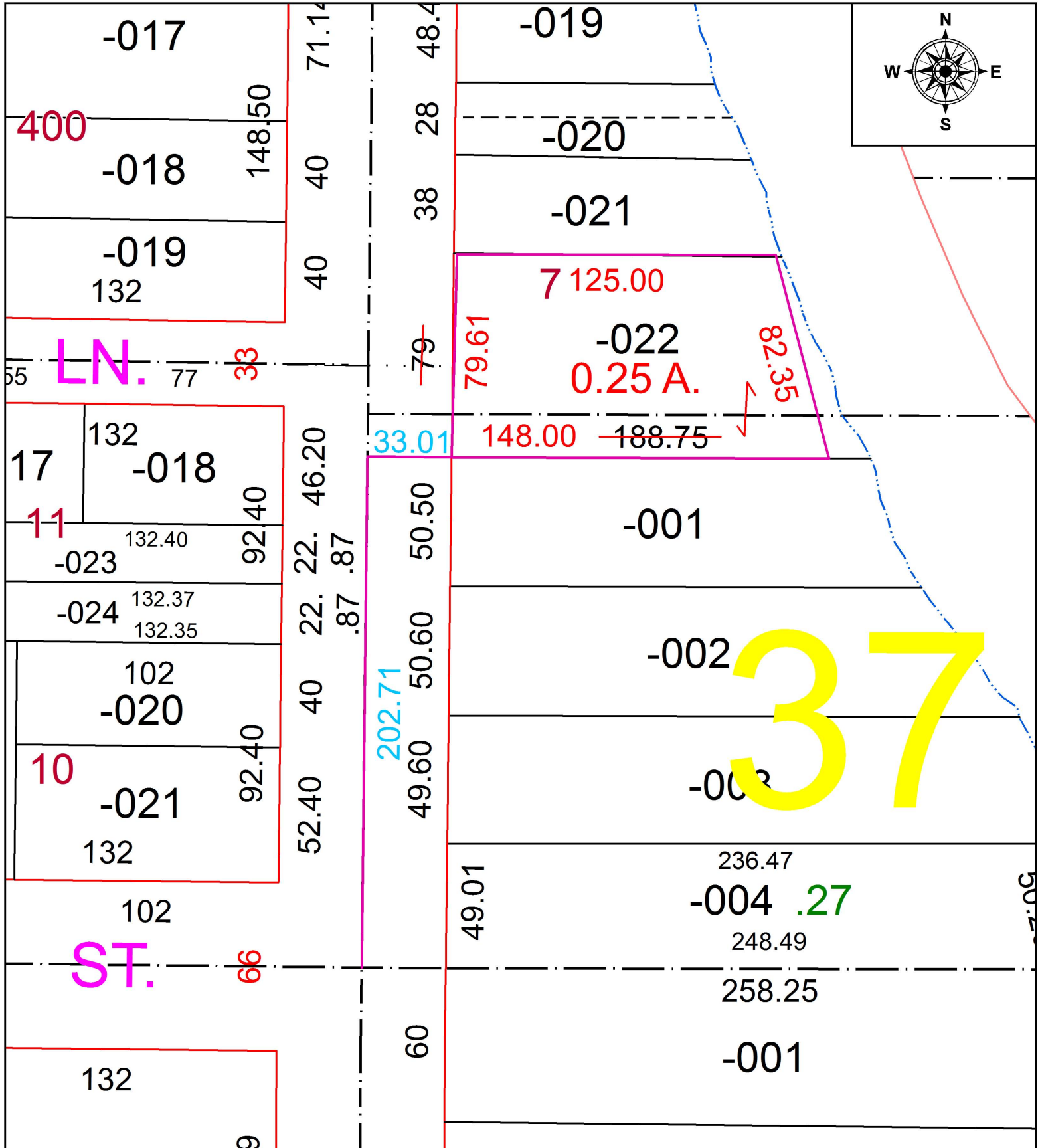


PARENT PARCEL: 06-26-052-000-022

CHILD PARCEL: ACREAGE CORRECTION

STARTING POINT: CL OF EAST AVE. & CL OF E. 6TH ST.

17-03710-C



**SPLITS/DEEDS PROCESSED**  
 LORAIN COUNTY TAX MAP DEPARTMENT  
 226 MIDDLE AVE. ELYRIA, OH

SURVEYED BY: THOMAS SIMON  
 CLOSURE: 1:244465  
 MAP PAGE(S): 06-26-052  
 APPROVED BY: TJS DATE: 7/24/17  
 SCALE: 1" = 50' PRIOR INSTRUMENT: 2017-0627131