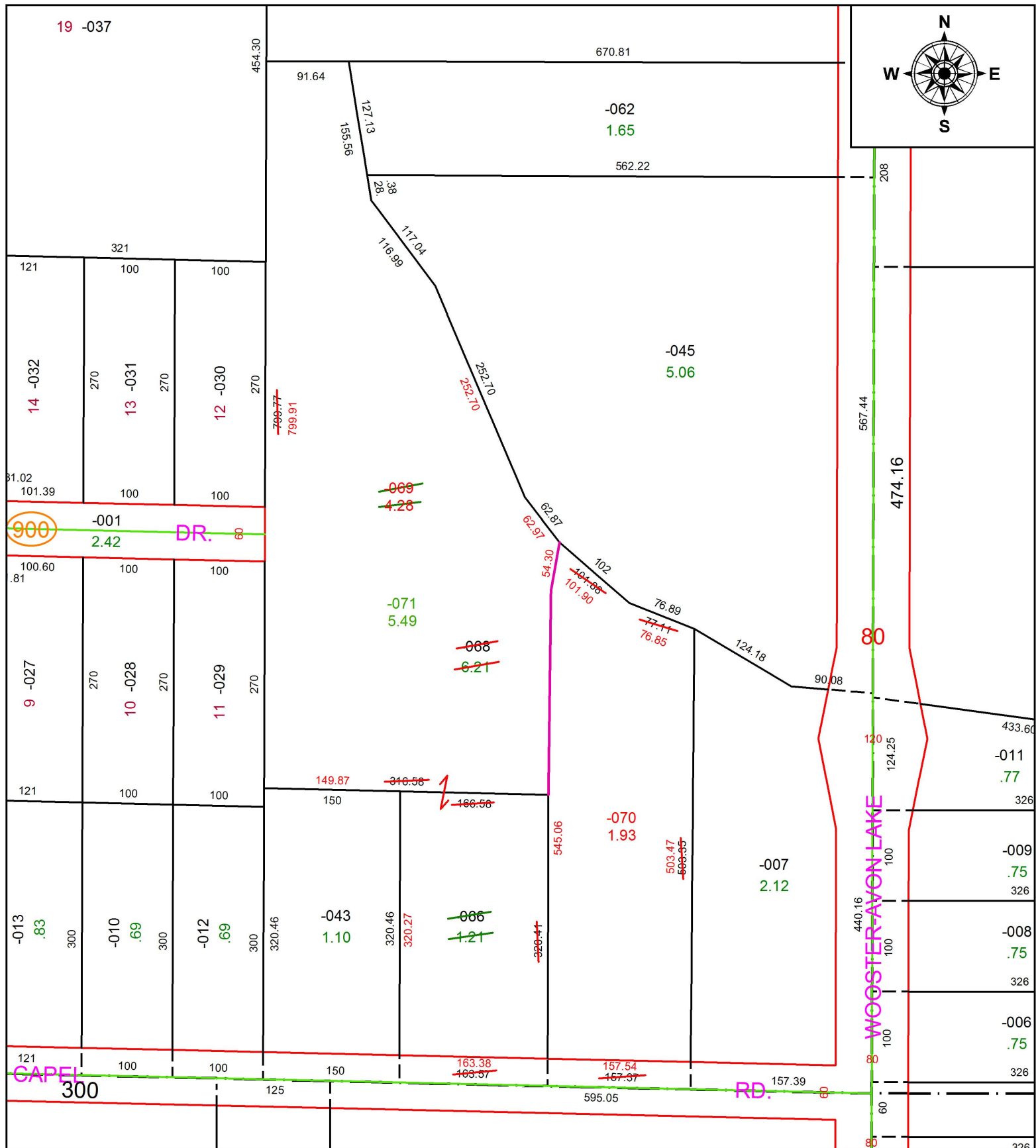


PARENT PARCEL: 11-00-057-000-066, -068

CHILD PARCEL: 11-00-057-000-069 THRU -071

STARTING POINT: INTERSECTION OF C/L OF CAPEL RD. AND C/L OF S.R.83

17-03709



**SPLITS/DEEDS PROCESSED**  
 LORAIN COUNTY TAX MAP DEPARTMENT  
 226 MIDDLE AVE. ELYRIA, OH

SURVEYED BY: TIMOHTY D. HOZALSKI

CLOSURE: 1: 200,304

MAP PAGE(S): 11-00-057

APPROVED BY: RRM DATE: 8-7-17

SCALE: 1" = 140 PRIOR INSTRUMENT: 20150556284