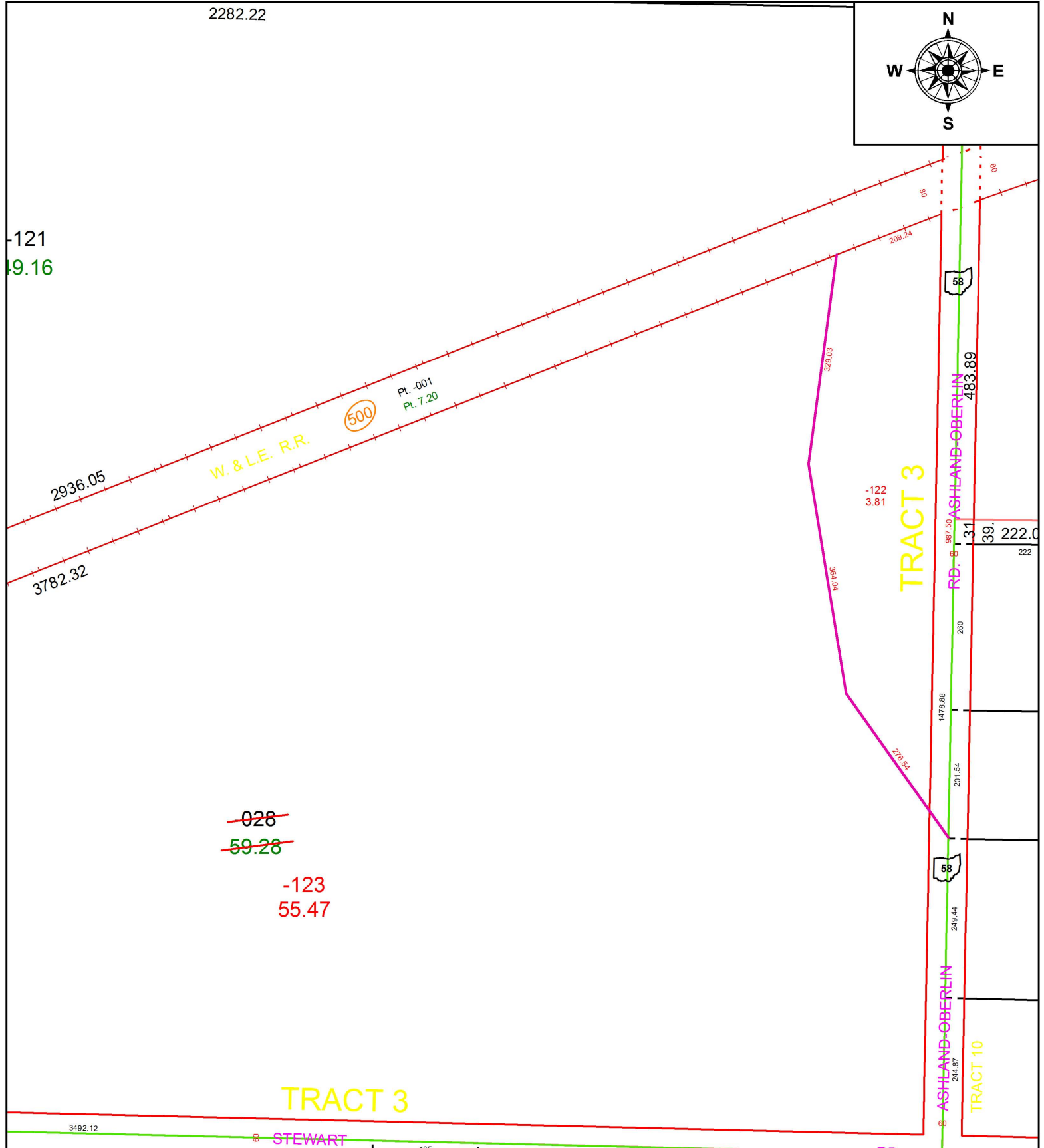


PARENT PARCEL: 21-03-000-000-028

CHILD PARCEL: 21-03-000-000-122, -123

STARTING POINT: INTERSECTION OF C/L OF S.R.58 AND C/L OF STEWART RD.

17-03708



121
19.16

~~028~~
~~59.28~~
-123
55.47

TRACT 3

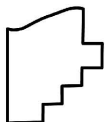
TRACT 3

58

31

58

TRACT 10



SPLITS/DEEDS PROCESSED
LORAIN COUNTY TAX MAP DEPARTMENT
226 MIDDLE AVE. ELYRIA, OH

SURVEYED BY:	THOMAS A. SIMON
CLOSURE:	1: 438,089
MAP PAGE(S):	21-F
APPROVED BY:	RRM DATE: 8-2-17
SCALE:	1" = 200 PRIOR INSTRUMENT: 20060131166