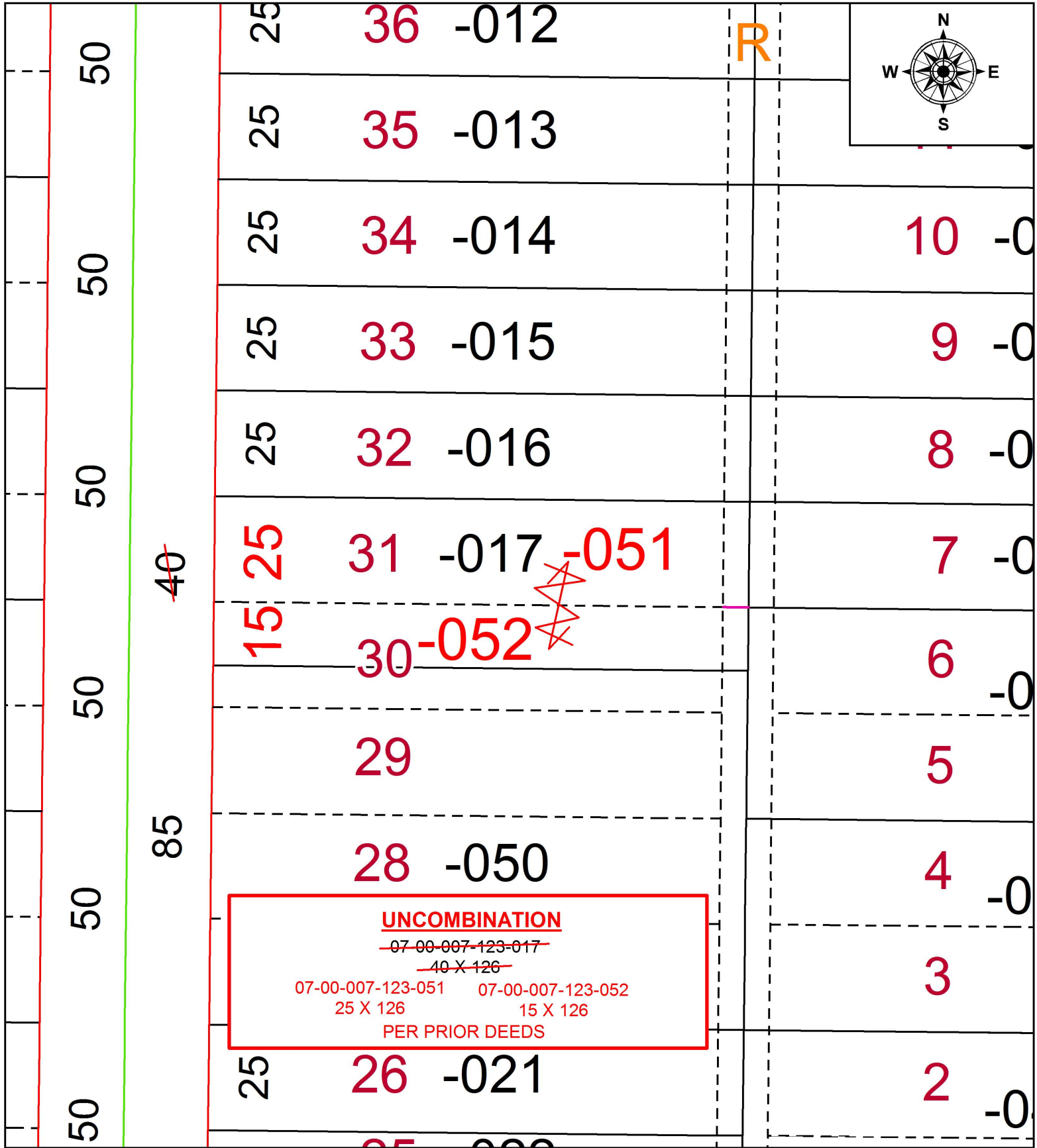


PARENT PARCEL: 07-00-007-123-017

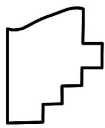
CHILD PARCEL: 07-00-007-123-051, -052

STARTING POINT: S/L 31 AND PART OF 32 IN RIDGEVILLE HEIGHTS (VOL.10 PG.11)

17-03708-U



**UNCOMBINATION**  
~~07-00-007-123-017~~  
~~40 X 126~~  
 07-00-007-123-051    07-00-007-123-052  
 25 X 126                    15 X 126  
 PER PRIOR DEEDS



**SPLITS/DEEDS PROCESSED**  
 LORAIN COUNTY TAX MAP DEPARTMENT  
 226 MIDDLE AVE. ELYRIA, OH

SURVEYED BY: \_\_\_\_\_ N/A  
 CLOSURE: \_\_\_\_\_ N/A  
 MAP PAGE(S): \_\_\_\_\_ 7-00-007  
 APPROVED BY: \_\_\_\_\_ RRM    DATE: \_\_\_\_\_ 7-20-17  
 SCALE: \_\_\_\_\_ 1" = 30    PRIOR INSTRUMENT: \_\_\_\_\_ 20170636707