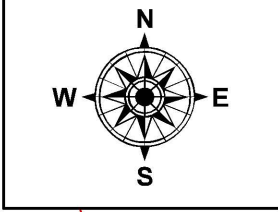


PARENT PARCEL: 14-00-029-000-010

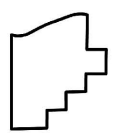
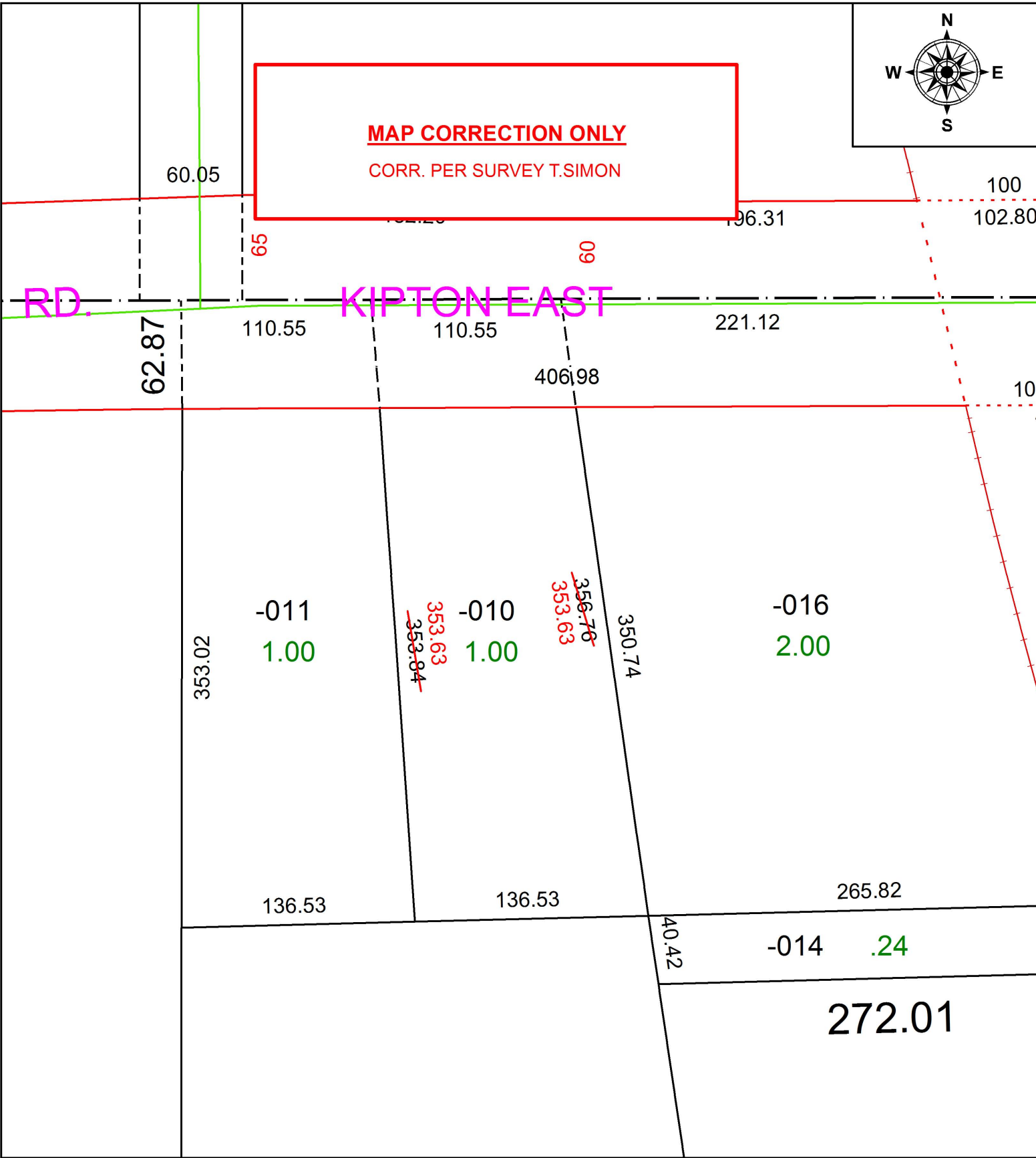
CHILD PARCEL: XX-XX-XXX-XXX-XXX

STARTING POINT: NORTHWEST CORNER OF O.L.29

17-03706-D



**MAP CORRECTION ONLY**  
CORR. PER SURVEY T.SIMON



**SPLITS/DEEDS PROCESSED**  
LORAIN COUNTY TAX MAP DEPARTMENT  
226 MIDDLE AVE. ELYRIA, OH

SURVEYED BY: THOMAS A. SIMON  
CLOSURE: 1: 735,366  
MAP PAGE(S): 14-A  
APPROVED BY: RRM DATE: 7-18-17  
SCALE: 1" = 75' PRIOR INSTRUMENT: 20120402055