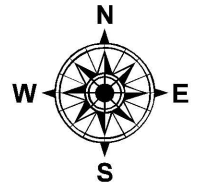


PARENT PARCEL: 04-00-025-000-350

CHILD PARCEL: 04-00-025-000-567, -568

STARTING POINT: INTERSECTION OF C/L OF ST. ANTHONY'S WAY AND C/L OF NAPA BLVD

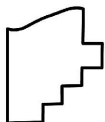
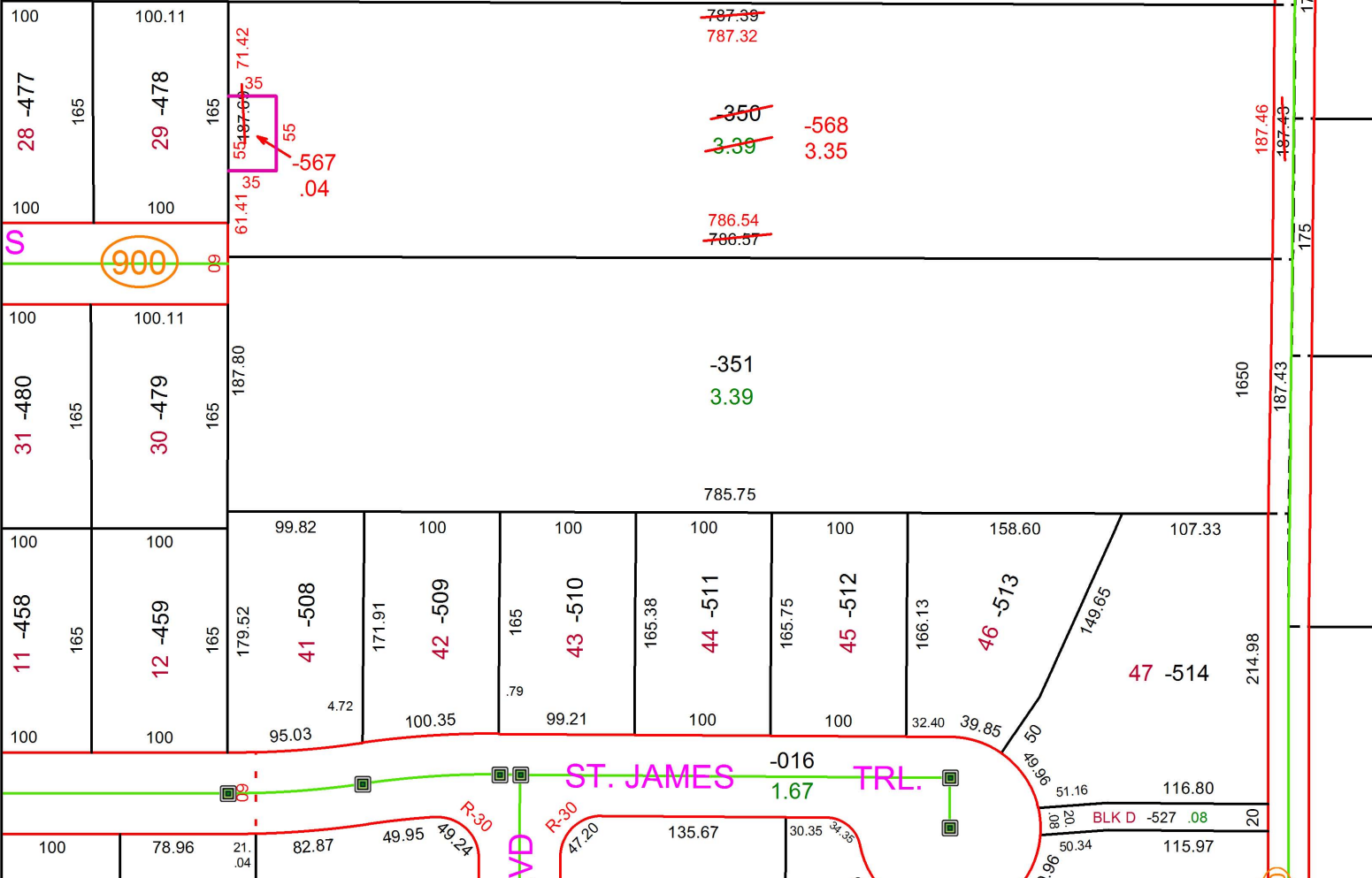
17-03703



-012  
18.78

551.41  
551.50

1478



**SPLITS/DEEDS PROCESSED**  
LORAIN COUNTY TAX MAP DEPARTMENT  
226 MIDDLE AVE. ELYRIA, OH

SURVEYED BY: AMY M. KELLY  
CLOSURE: 1: 2147483648  
MAP PAGE(S): 4-00-025  
APPROVED BY: RRM DATE: 7-27-17  
SCALE: 1" = 125 PRIOR INSTRUMENT: 20110366611