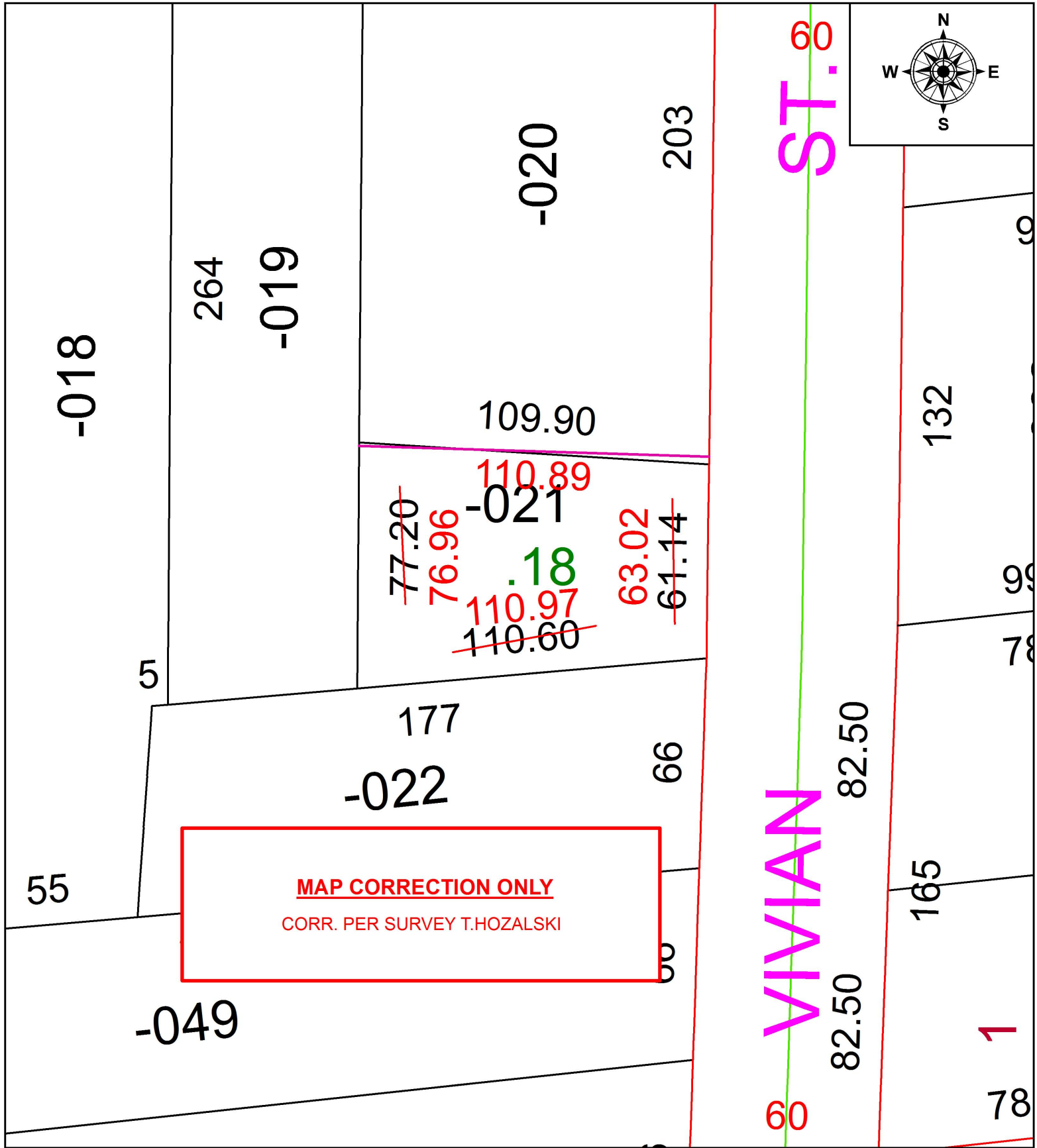


PARENT PARCEL: 05-00-011-103-021

CHILD PARCEL: XX-XX-XXX-XXX-XXX

STARTING POINT: INTERSECTION OF C/L OF VIVIAN ST. AND C/L OF CHARLES ST.

17-03702-D



MAP CORRECTION ONLY
 CORR. PER SURVEY T.HOZALSKI



SPLITS/DEEDS PROCESSED
 LORAIN COUNTY TAX MAP DEPARTMENT
 226 MIDDLE AVE. ELYRIA, OH

SURVEYED BY: TIMOTHY D. HOZALSKI
 CLOSURE: 1: 332,972
 MAP PAGE(S): 5-00-011
 APPROVED BY: RRM DATE: 7-6-17
 SCALE: 1" = 125 PRIOR INSTRUMENT: 20130456558