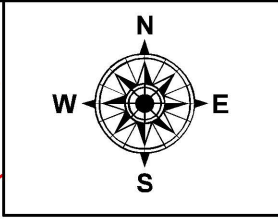
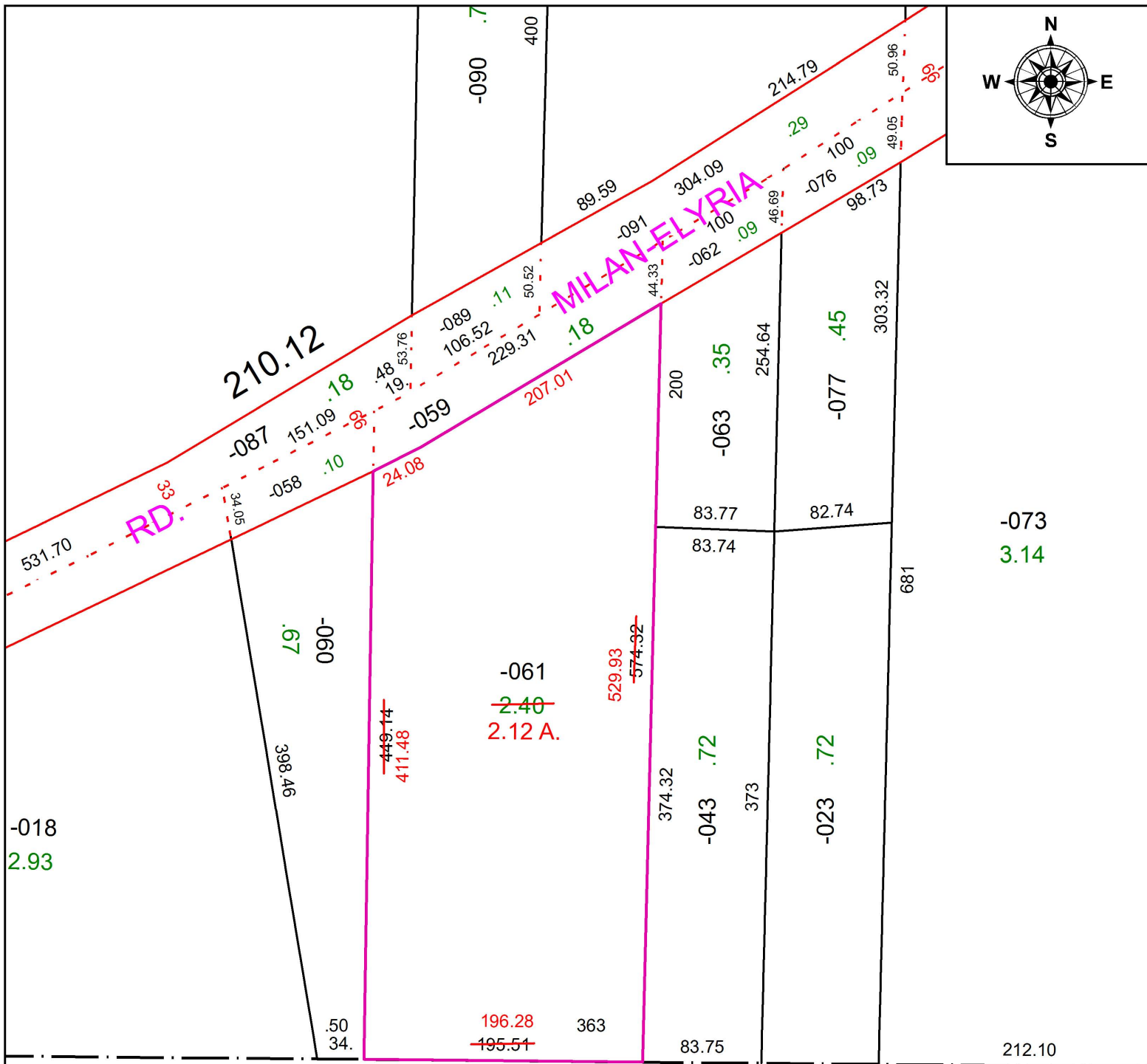


PARENT PARCEL: 05-00-029-000-061

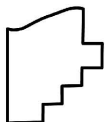
CHILD PARCEL: XX-XX-XXX-XXX-XXX

STARTING POINT: IRON BAR CL OF ST. RT. 113 AT STATION 291+42.58

17-03701-C



1437.89



SPLITS/DEEDS PROCESSED
 LORAIN COUNTY TAX MAP DEPARTMENT
 226 MIDDLE AVE. ELYRIA, OH

SURVEYED BY: MATTHEW MOKANYK
CLOSURE: 1: 33,000
MAP PAGE(S): 05-00-029
APPROVED BY: TJS **DATE:** 6/30/17
SCALE: 1" = 200 **PRIOR INSTRUMENT:** 2012-0398327