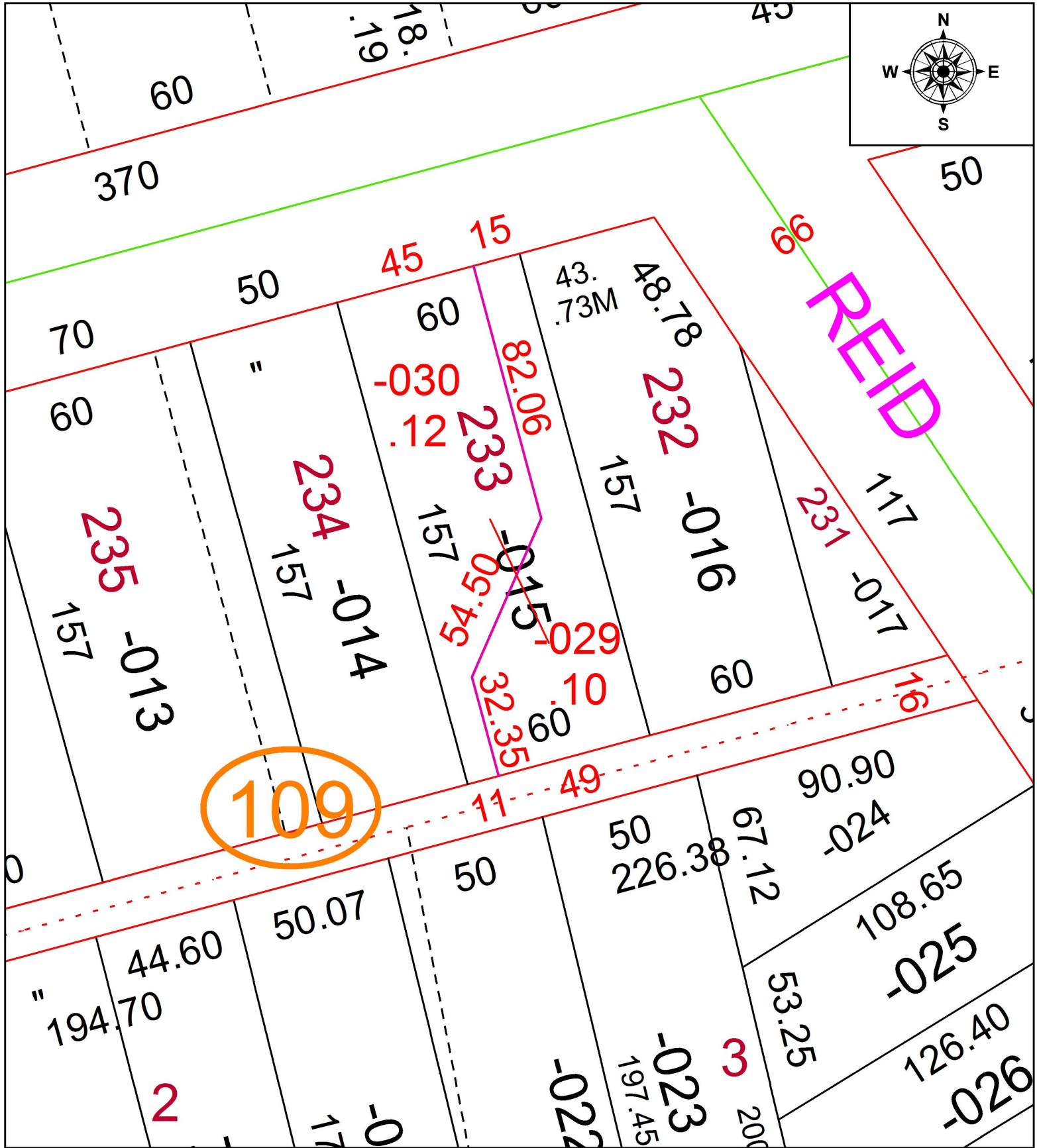
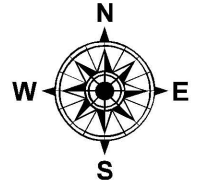


PARENT PARCEL: 02-01-005-109-015

CHILD PARCEL: 02-01-005-109-029, -030

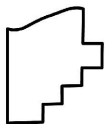
STARTING POINT: INTERSECTION OF C/L OF W.5TH ST. AND C/L OF WASHINGTON AVE.

17-03696



109

REID



SPLITS/DEEDS PROCESSED
LORAIN COUNTY TAX MAP DEPARTMENT
226 MIDDLE AVE. ELYRIA, OH

SURVEYED BY: DOUGLAS A. HASEL
CLOSURE: 1: 121,662
MAP PAGE(S): 2-01-005
APPROVED BY: RRM DATE: 7-17-17
SCALE: 1" = 40 PRIOR INSTRUMENT: 20140523391