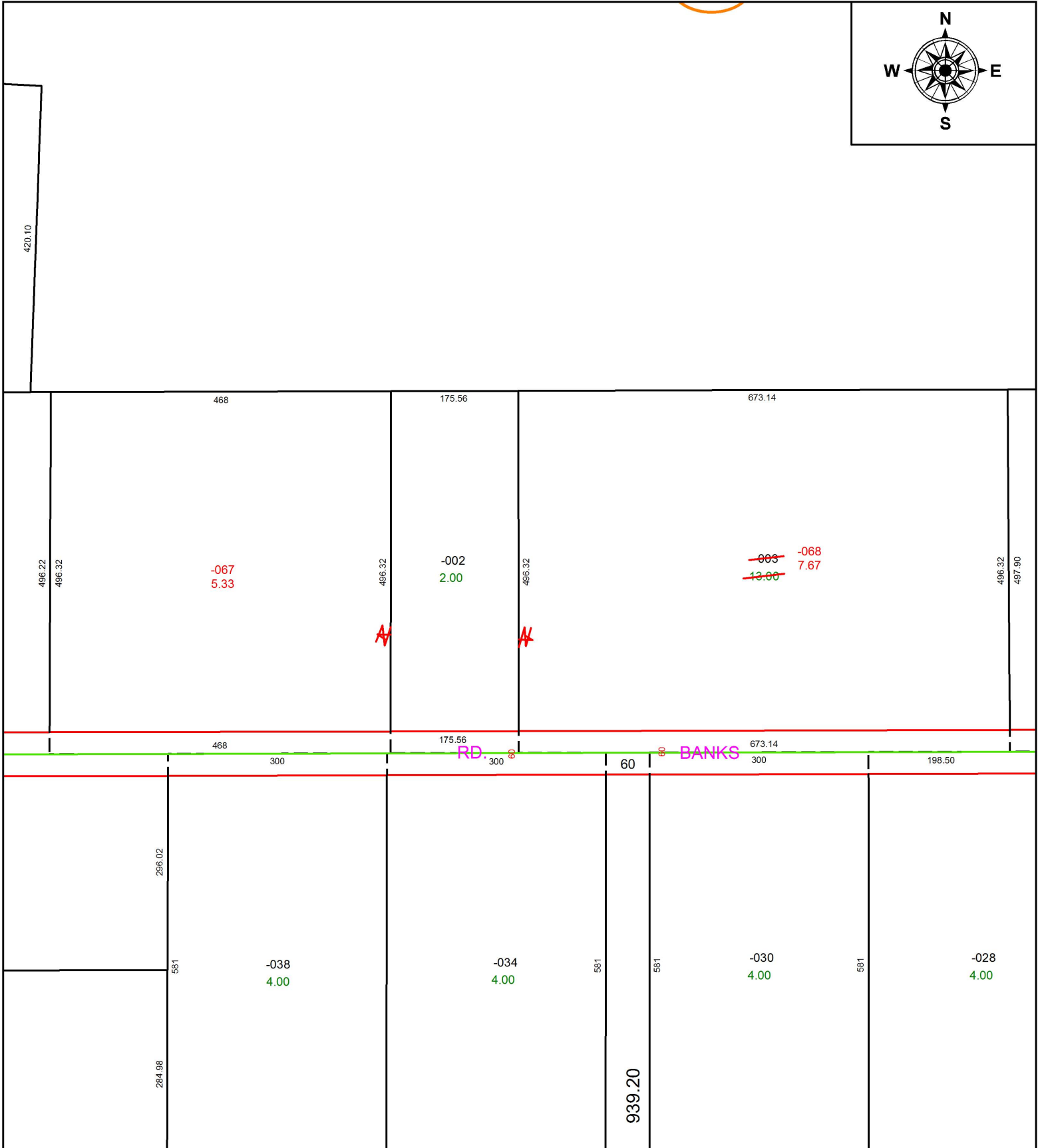


PARENT PARCEL: 10-00-023-102-003

CHILD PARCEL: 10-00-023-102-067, -068

STARTING POINT: SOUTHWEST CORNER OF LAND CONVEYED TO AUGUST INGWER (DV 234/469)

17-03696-U



SPLITS/DEEDS PROCESSED
 LORAIN COUNTY TAX MAP DEPARTMENT
 226 MIDDLE AVE. ELYRIA, OH

SURVEYED BY: C.T. BIGGS
 CLOSURE: 1: 2147483648
 MAP PAGE(S): 10-00-023
 APPROVED BY: RRM DATE: 6-28-17
 SCALE: 1" = 175 PRIOR INSTRUMENT: 20160608741