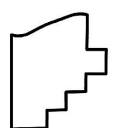
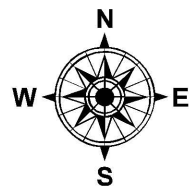
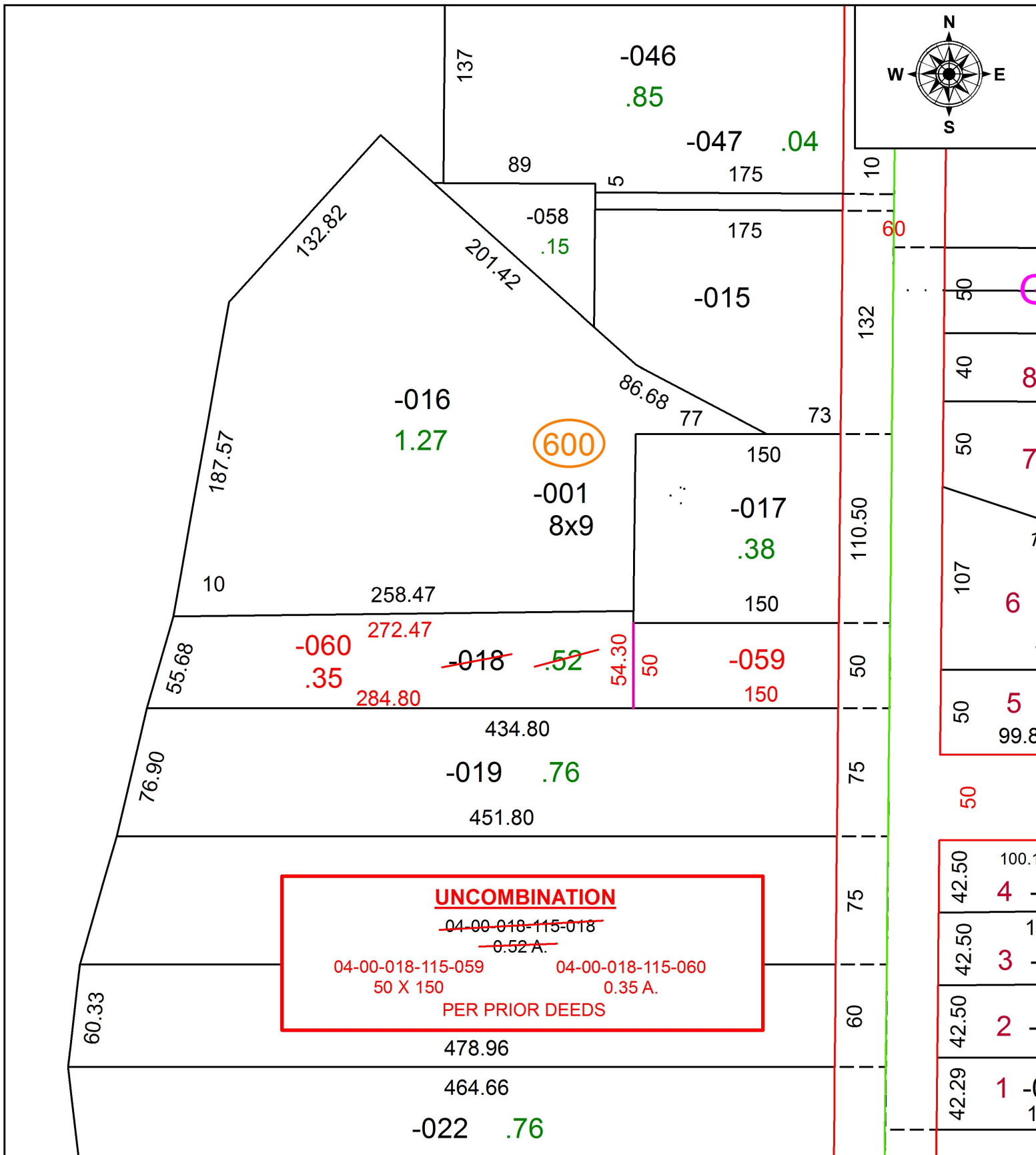


PARENT PARCEL: 04-00-018-115-018

CHILD PARCEL: 04-00-018-115-059, -060

STARTING POINT: SOUTHWEST CORNER OF LAND CONVEYED TO JOHN KNIPPER (DV 173 PG.20)

17-03695-U



**SPLITS/DEEDS PROCESSED**  
 LORAIN COUNTY TAX MAP DEPARTMENT  
 226 MIDDLE AVE. ELYRIA, OH

SURVEYED BY: \_\_\_\_\_ N/A  
 CLOSURE: \_\_\_\_\_ N/A  
 MAP PAGE(S): 4-00-018  
 APPROVED BY: RRM DATE: 6-27-17  
 SCALE: 1" = 75' PRIOR INSTRUMENT: 20060151289