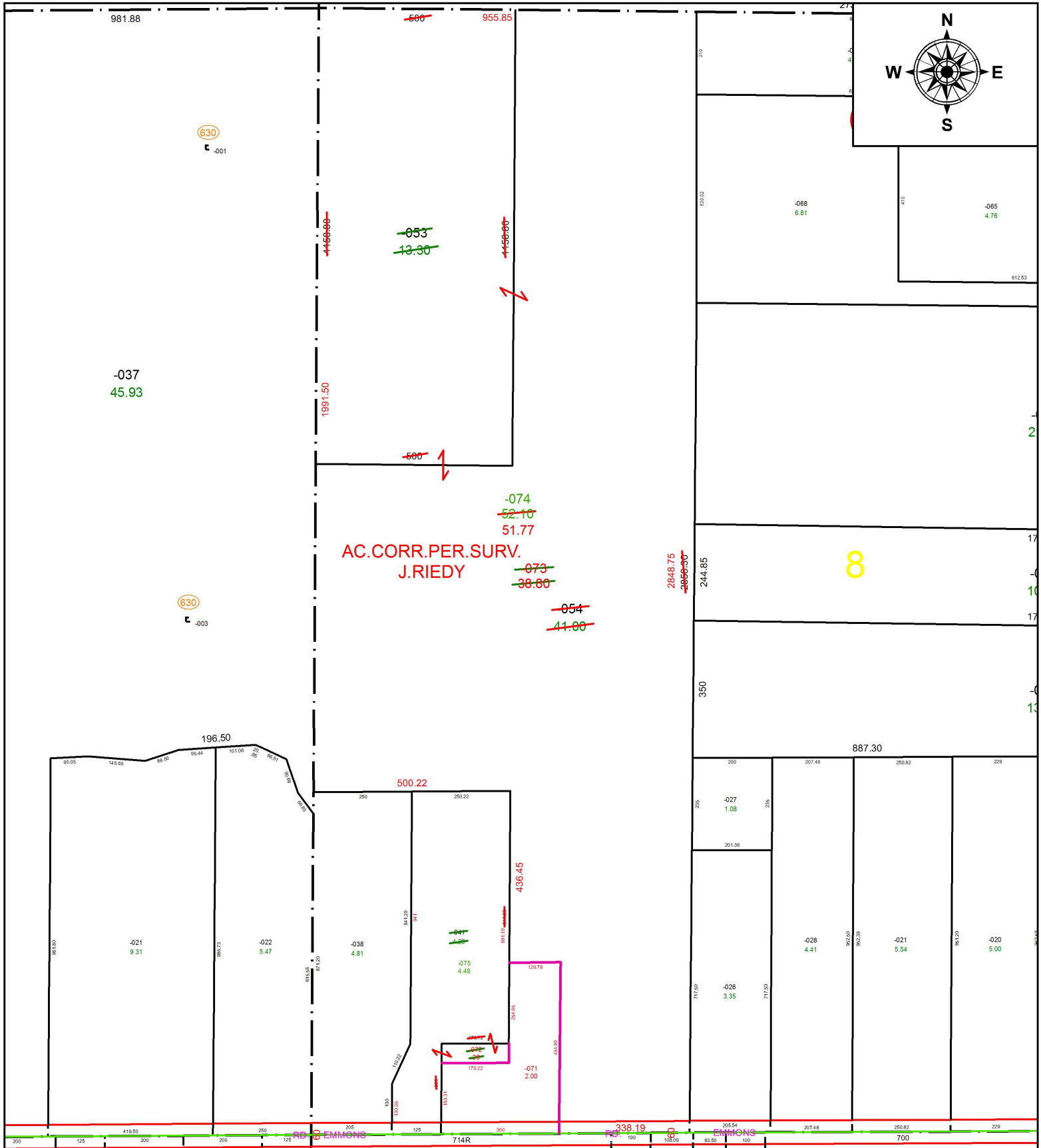


PARENT PARCEL: 12-00-008-000-041, -053, -054

CHILD PARCEL: 12-00-008-000-071 THRU -075

STARTING POINT: INTERSECTION OF C/L OF EMMONS RD. AND C/L OF S.MARKS RD.

17-03694



AC.CORR.PER.SURV.
J.RIEDY

8

SPLITS/DEEDS PROCESSED

LORAIN COUNTY TAX MAP DEPARTMENT
226 MIDDLE AVE. ELYRIA, OH

SURVEYED BY: JOSHUA A. RIEDY
 CLOSURE: 1: 403,135
 MAP PAGE(S): 12-00-008
 APPROVED BY: RRM DATE: 7-14-17
 SCALE: 1" = 325 PRIOR INSTRUMENT: DV 577/876