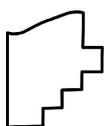
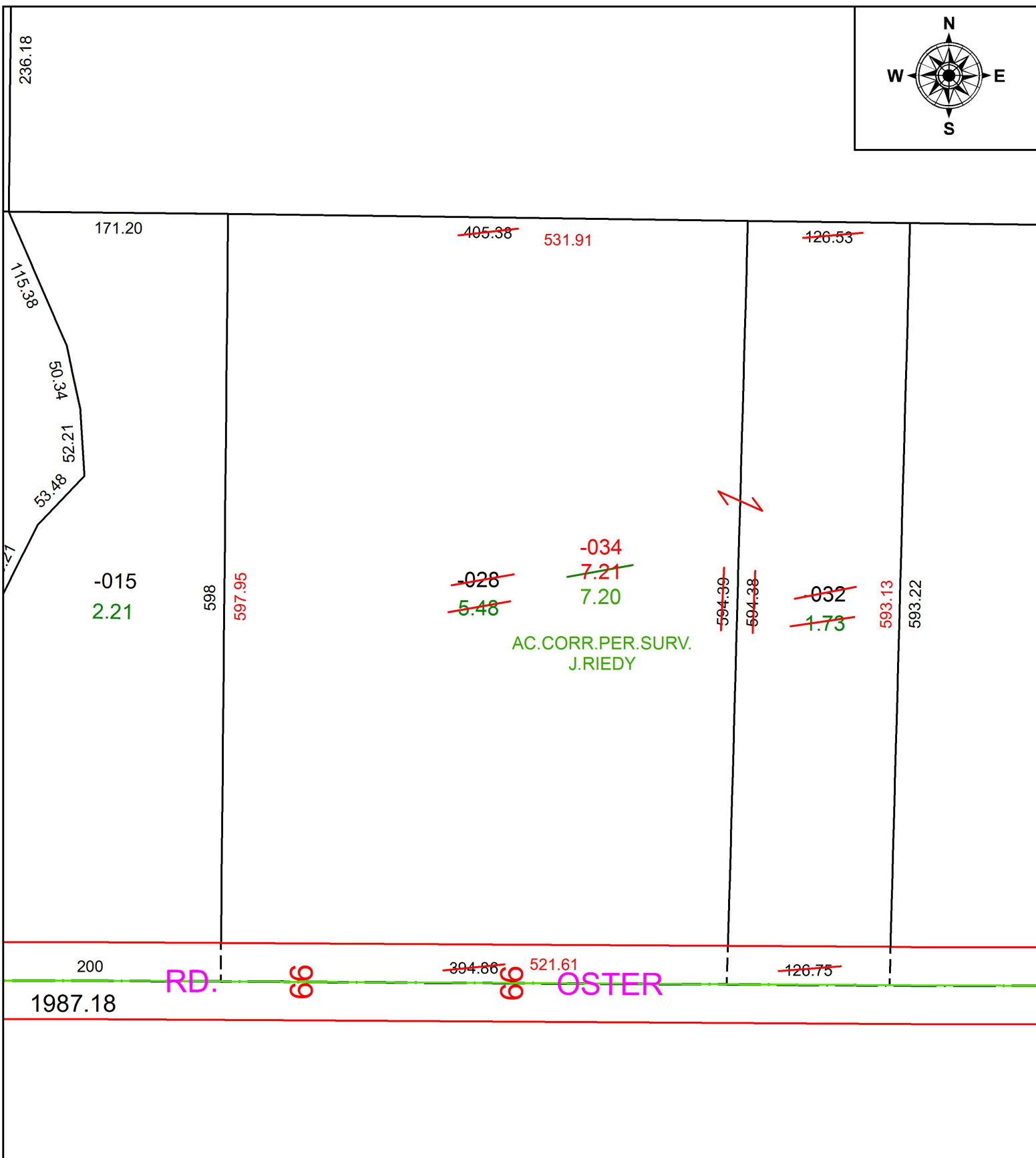


PARENT PARCEL: 03-00-020-000-028, -032

CHILD PARCEL: 03-00-020-000-034

STARTING POINT: INTERSECTION OF C/L OF S.R.301 AND C/L OF OSTER RD.

17-03693



SPLITS/DEEDS PROCESSED
LORAIN COUNTY TAX MAP DEPARTMENT
226 MIDDLE AVE. ELYRIA, OH

SURVEYED BY: JOSHUA S. RIEDY
CLOSURE: 1: 381,587
MAP PAGE(S): 3-00-020
APPROVED BY: RRM DATE: 7-13-17
SCALE: 1" = 100 PRIOR INSTRUMENT: 20150562405