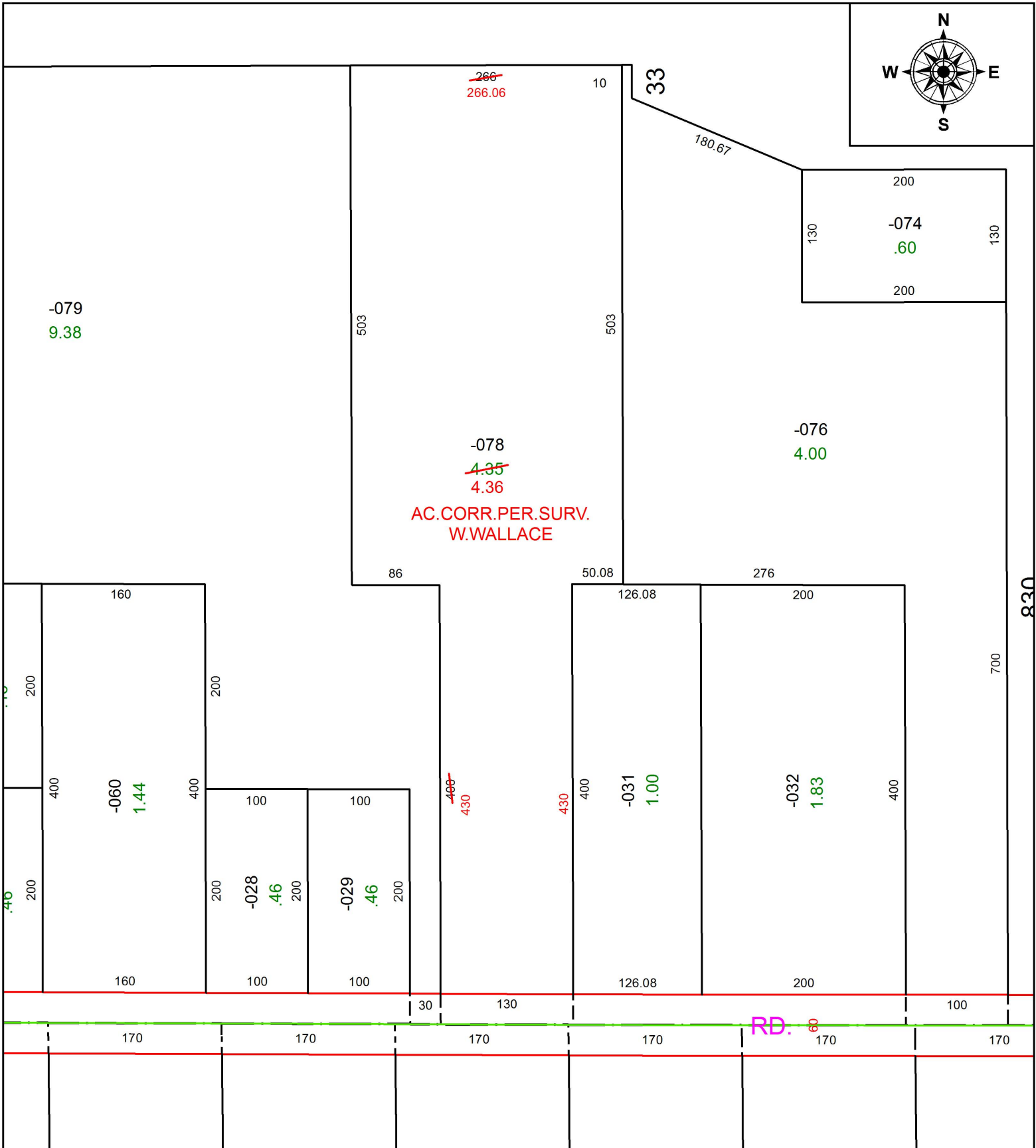


PARENT PARCEL: 11-00-077-000-078

CHILD PARCEL: XX-XX-XXX-XXX-XXX

STARTING POINT: INTERSECTION OF C/L OF DURKEE RD. AND C/L OF CAPEL RD.

17-03692-D



SPLITS/DEEDS PROCESSED
 LORAIN COUNTY TAX MAP DEPARTMENT
 226 MIDDLE AVE. ELYRIA, OH

SURVEYED BY: WILLIAM R. WALLACE
 CLOSURE: 1: 595,011
 MAP PAGE(S): 11-00-077
 APPROVED BY: RRM DATE: 6-27-17
 SCALE: 1" = 100 PRIOR INSTRUMENT: 20130487251