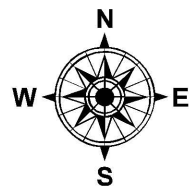
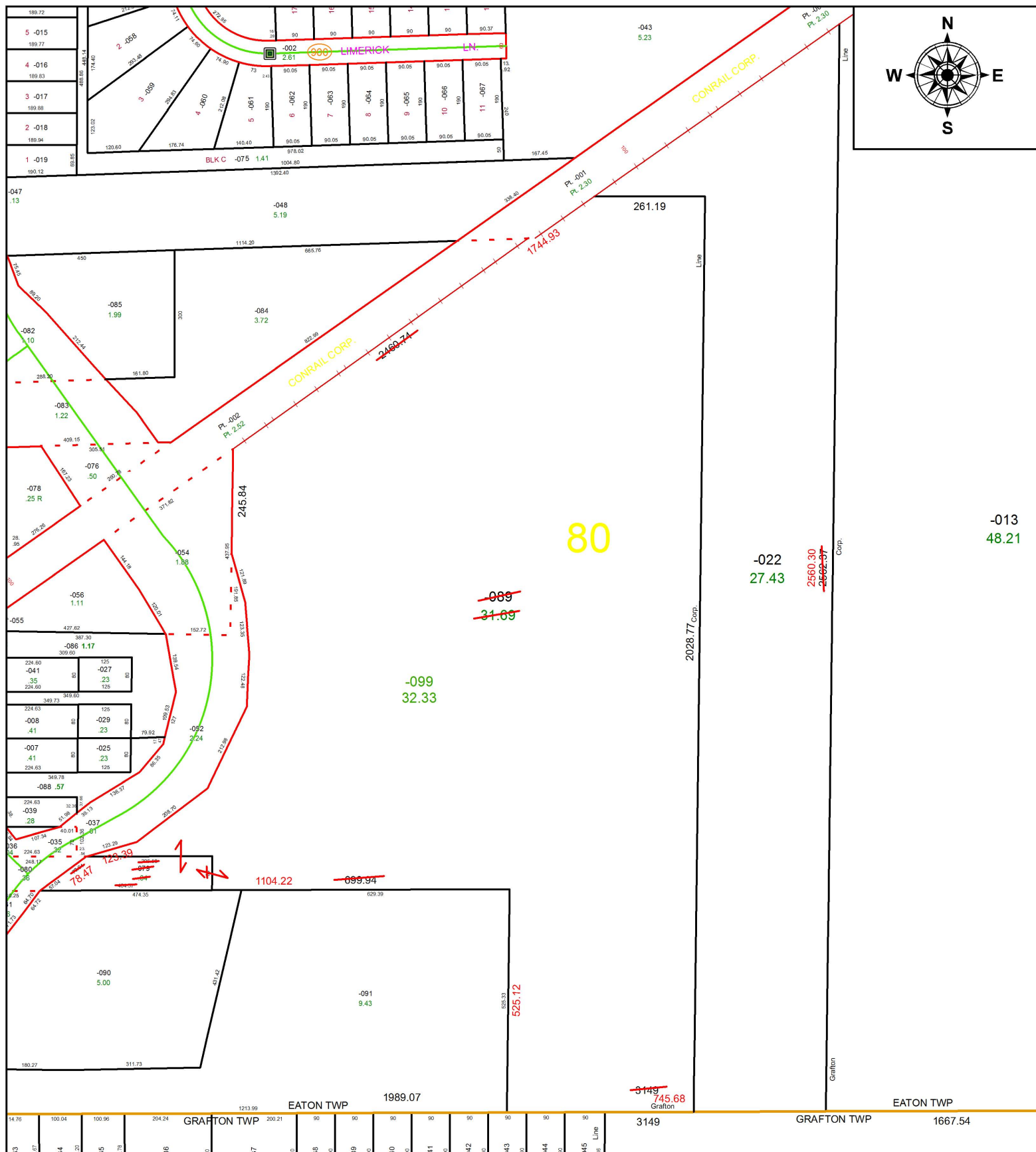


PARENT PARCEL: 11-00-080-000-022, -079, -089

CHILD PARCEL: 11-00-080-000-022, -099

STARTING POINT: INTERSECTION OF C/L OF ELM ST. AND SOUTH LINE OF O.L.80

17-03691



SPLITS/DEEDS PROCESSED

LORAIN COUNTY TAX MAP DEPARTMENT
226 MIDDLE AVE. ELYRIA, OH

SURVEYED BY: THOMAS A. SIMON
 CLOSURE: 1: 1,882,692
 MAP PAGE(S): 11-00-080
 APPROVED BY: RRM DATE: 7-11-17
 SCALE: 1" = 300 PRIOR INSTRUMENT: 20130442983