

PARENT PARCEL: 05-00-006-000-147

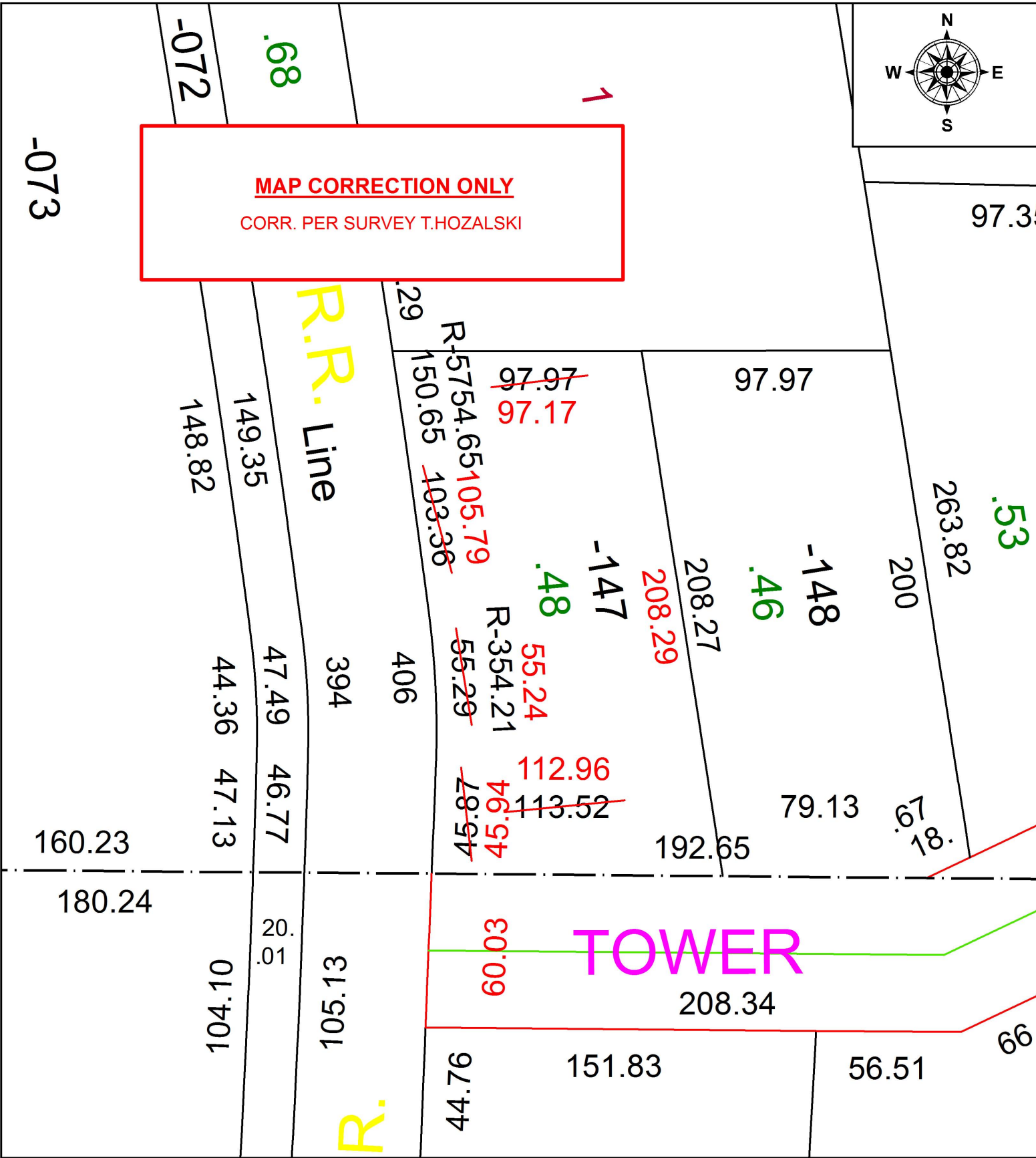
CHILD PARCEL: XX-XX-XXX-XXX-XXX

STARTING POINT: SOUTHWEST CORNER S/L 1 IN MIDDLE RIDGE SUB.

17-03691-D



**MAP CORRECTION ONLY**  
CORR. PER SURVEY T.HOZALSKI



**SPLITS/DEEDS PROCESSED**  
LORAIN COUNTY TAX MAP DEPARTMENT  
226 MIDDLE AVE. ELYRIA, OH

SURVEYED BY: TIMOHTY D. HOZALSKI

CLOSURE: 1: 53,200

MAP PAGE(S): 5-00-006

APPROVED BY: RRM DATE: 6-22-17

SCALE: 1" = 50 PRIOR INSTRUMENT: 20170624809