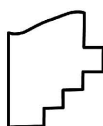
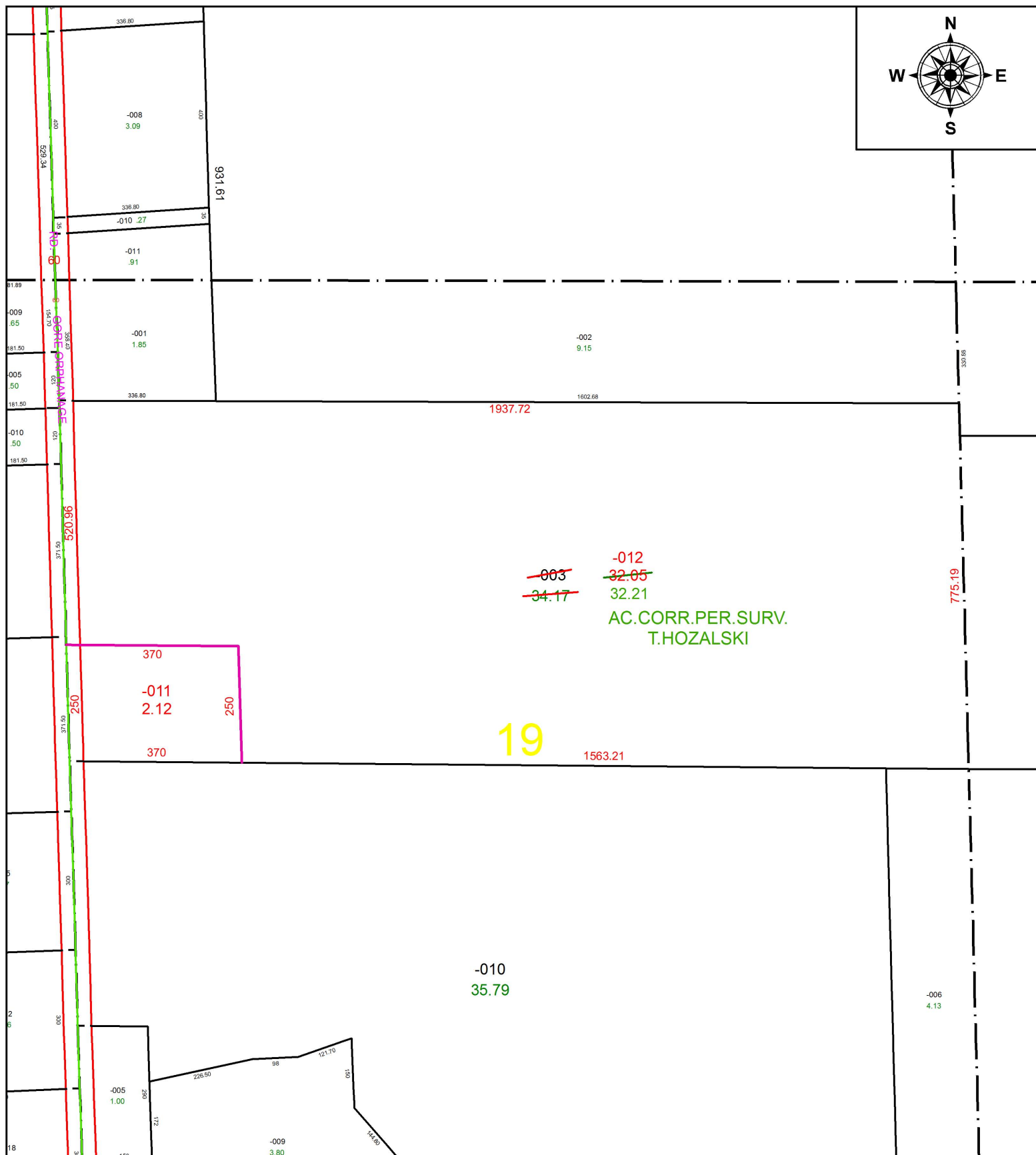


PARENT PARCEL: 08-13-019-000-003

CHILD PARCEL: 08-13-019-000-011, -012

STARTING POINT: NORTHWEST CORNER OF O.L.2

17-03690



SPLITS/DEEDS PROCESSED
LORAIN COUNTY TAX MAP DEPARTMENT
226 MIDDLE AVE. ELYRIA, OH

SURVEYED BY: TIMOTHY D. HOZALSKI

CLOSURE: 1: 504,629

MAP PAGE(S): 8-E

APPROVED BY: RRM DATE: 7-11-17

SCALE: 1" = 275 PRIOR INSTRUMENT: DV 1363/224