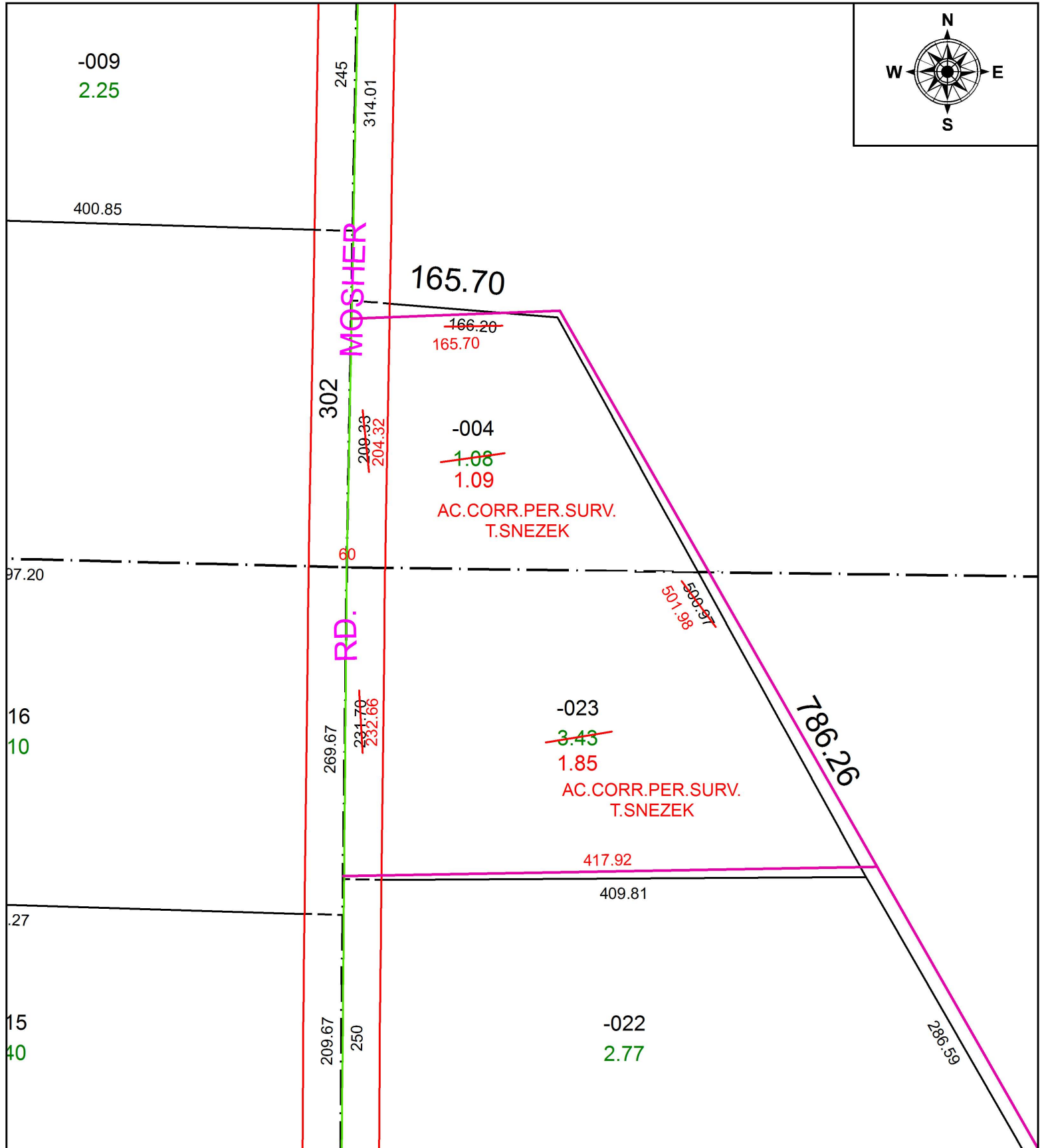


PARENT PARCEL: 17-08-026-000-004, 17-08-029-000-023

CHILD PARCEL: XX-XX-XXX-XXX-XXX

STARTING POINT: NORTHWEST CORNER OF O.L.29

17-03689-D



SPLITS/DEEDS PROCESSED
 LORAIN COUNTY TAX MAP DEPARTMENT
 226 MIDDLE AVE. ELYRIA, OH

SURVEYED BY: THOMAS M. SNEZEK

CLOSURE: 1: 40,425

MAP PAGE(S): 17-D

APPROVED BY: RRM DATE: 6-19-17

SCALE: 1" = 100 PRIOR INSTRUMENT: 20030943512