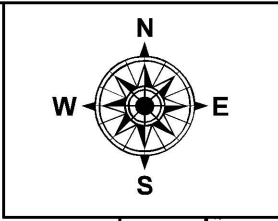
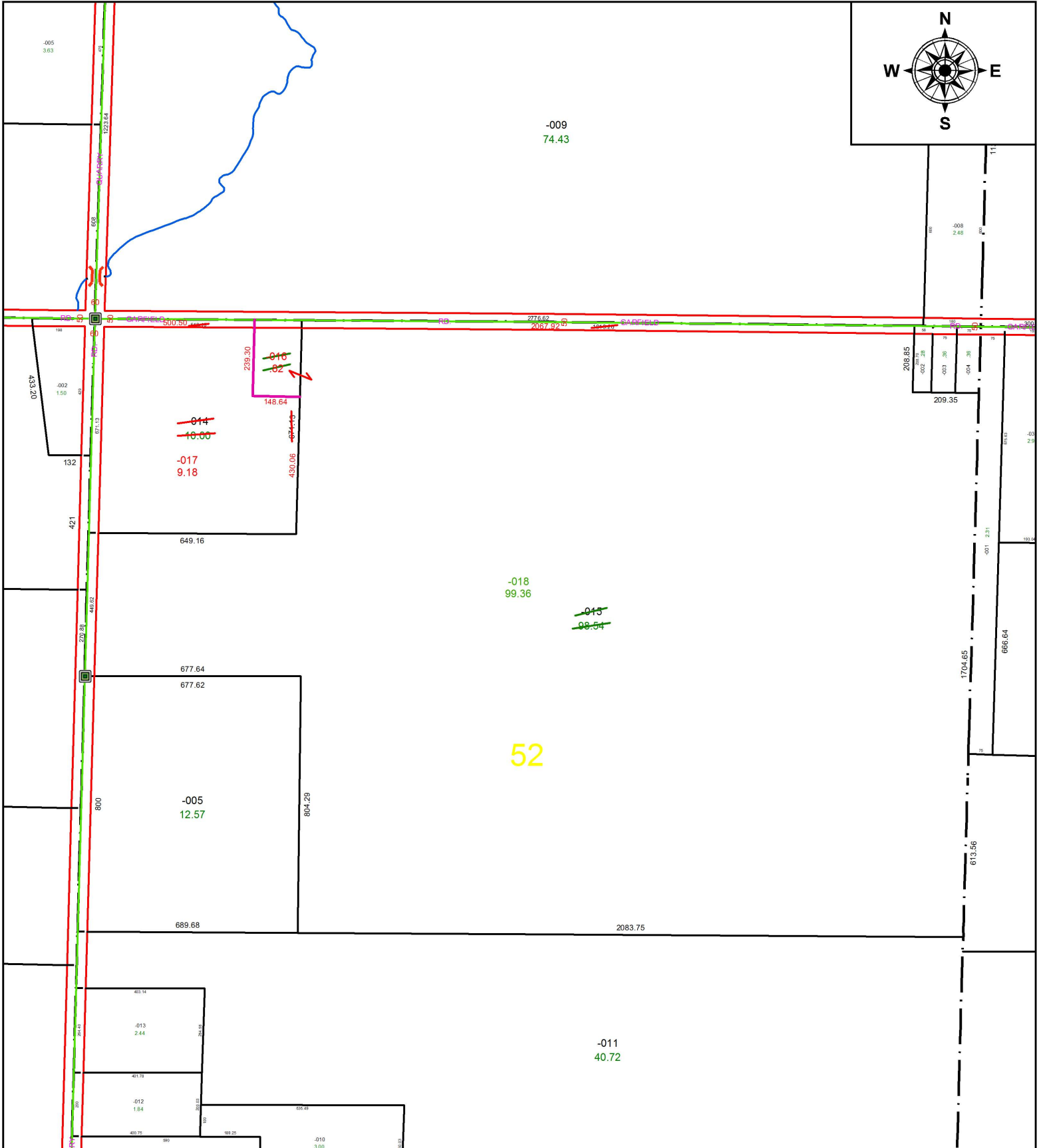


PARENT PARCEL: 09-00-052-000-014, -015

CHILD PARCEL: 09-00-052-000-016 THRU -018

STARTING POINT: INTERSECTION OF C/L OF GARFIELD RD. AND C/L OF QUARRY RD.

17-03688



52

**SPLITS/DEEDS PROCESSED**

LORAIN COUNTY TAX MAP DEPARTMENT  
226 MIDDLE AVE. ELYRIA, OH

SURVEYED BY:	TIMOTHY D. HOZALSKI
CLOSURE:	1: 180,175
MAP PAGE(S):	9-00-052
APPROVED BY:	RRM DATE: 7-10-17
SCALE:	1" = 400 PRIOR INSTRUMENT: 20170616411

