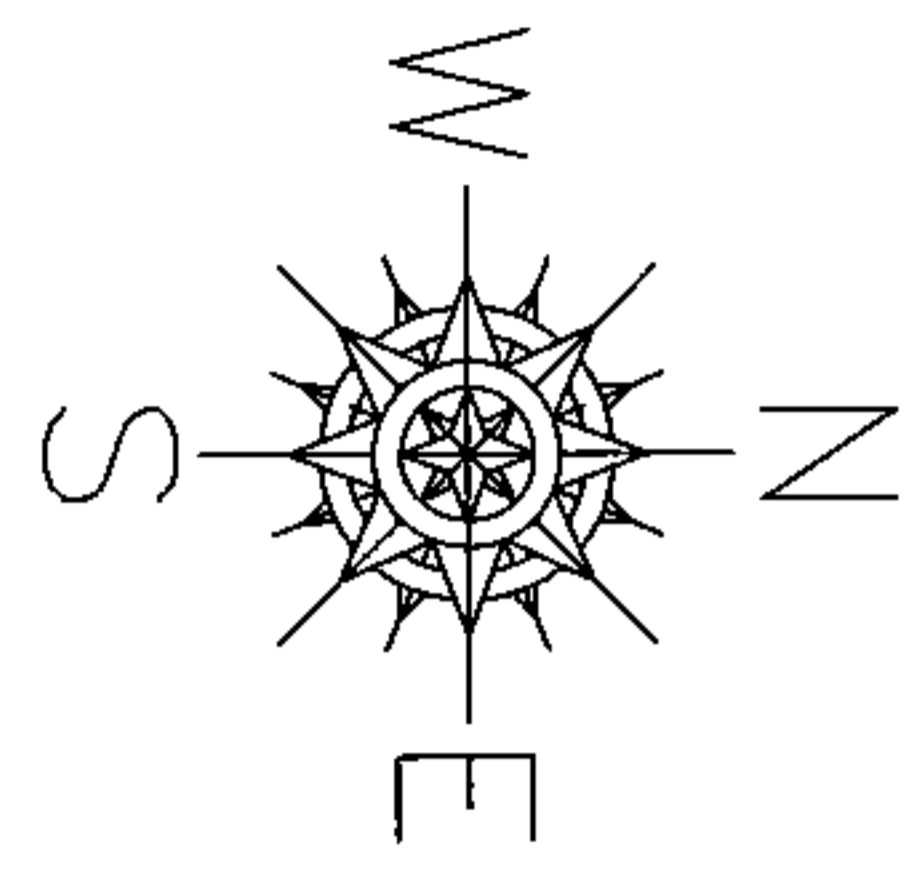
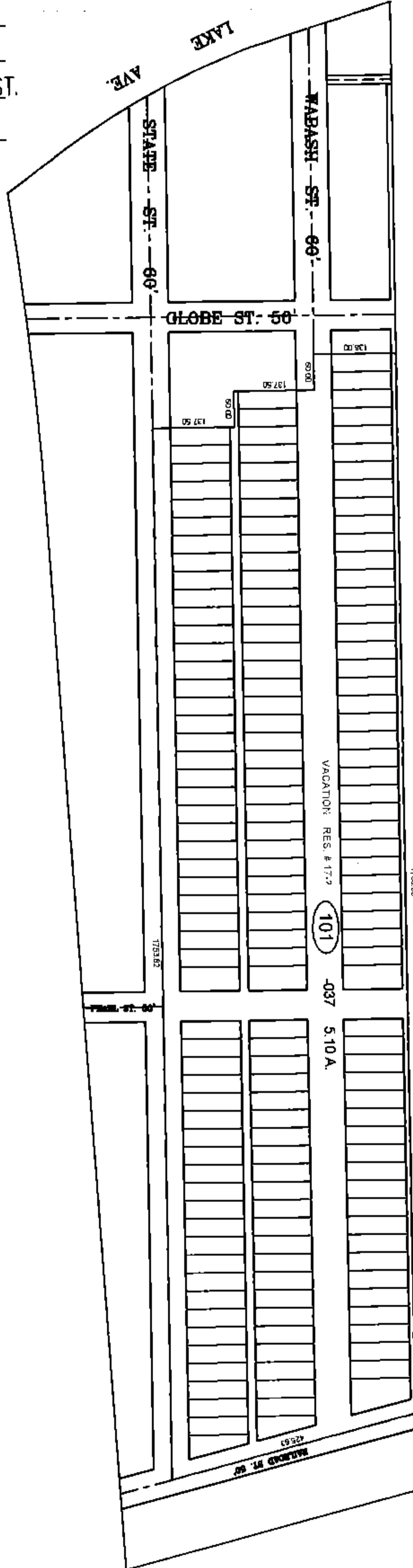
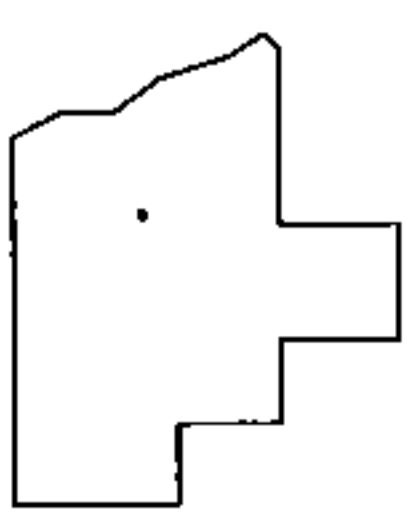


PARENT PARCEL: ADD TO DUPLICATE  
 CHILD PARCEL: 06-22-020-101-037  
 STARTING POINT: I.P. SET, CL OF STATE ST.  
& CL OF RAILROAD ST.

17-03688-V



STREET & ALLEY VACATION  
 ORD. # 17-778



**SPLITS/DEEDS PROCESSED**  
 LORAIN COUNTY TAX MAP DEPARTMENT  
 226 MIDDLE AVE. ELYRIA, OHIO

SURVEYED BY: T. SPILLMAN  
 CLOSURE: 0.01 : 10,000  
 MAP PAGE(S): 06-22-020  
 APPROVED BY: TJS DATE: 6/15/17  
 SCALE: 1" = 300' PRIOR INSTRUMENT: DV XXXX/XXX