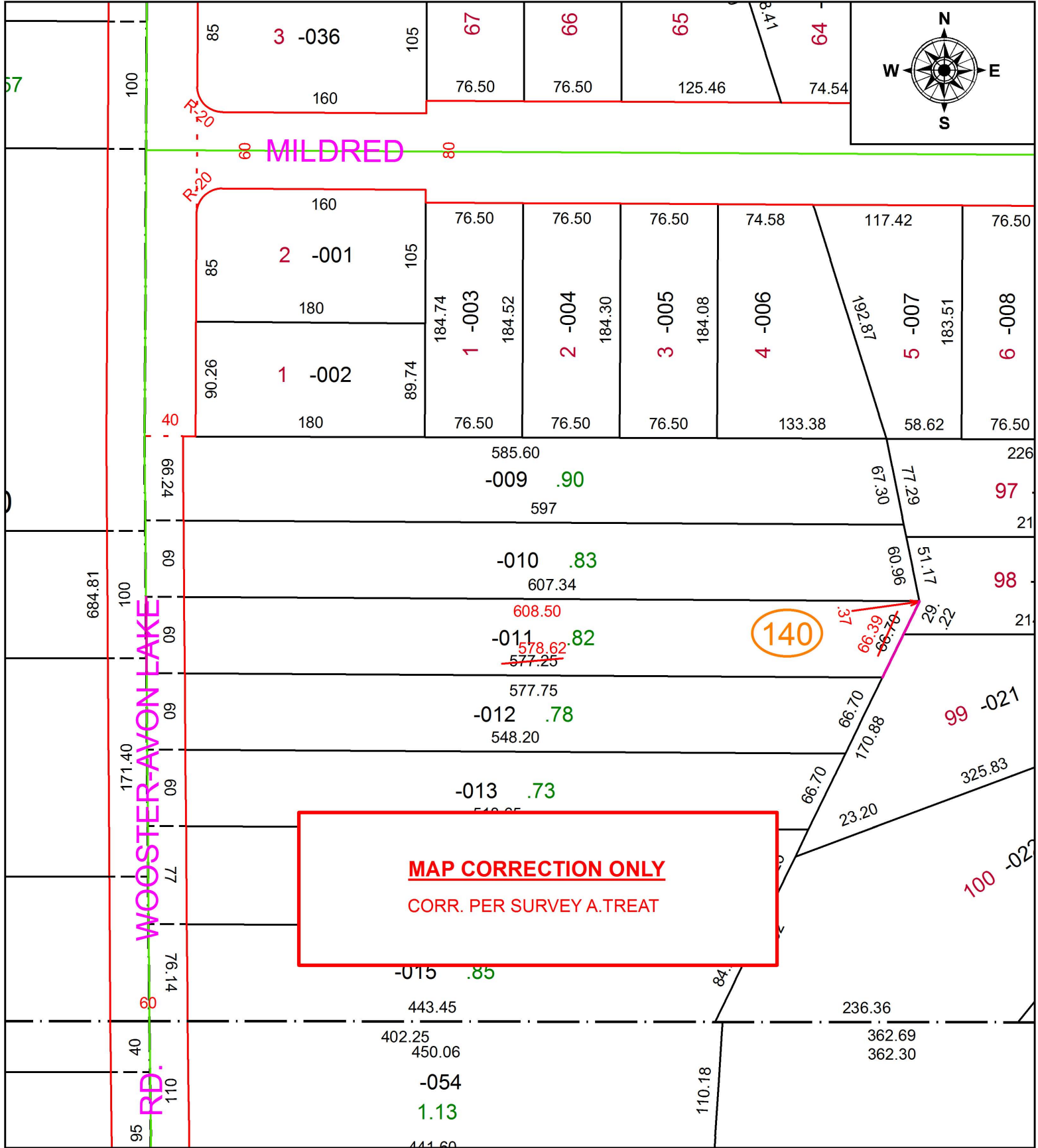


PARENT PARCEL: 07-00-020-140-011

CHILD PARCEL: XX-XX-XXX-XXX-XXX

STARTING POINT: INTERSECTION OF C/L OF S.R. 83 AND SOUTH LINE OF O.L. 20

17-03687-D



MAP CORRECTION ONLY
CORR. PER SURVEY A.TREAT



SPLITS/DEEDS PROCESSED
LORAIN COUNTY TAX MAP DEPARTMENT
226 MIDDLE AVE. ELYRIA, OH

SURVEYED BY: ADAM D. TREAT
 CLOSURE: 1: 260,787
 MAP PAGE(S): 7-00-020
 APPROVED BY: RRM DATE: 6-6-17
 SCALE: 1" = 100 PRIOR INSTRUMENT: 20120414525