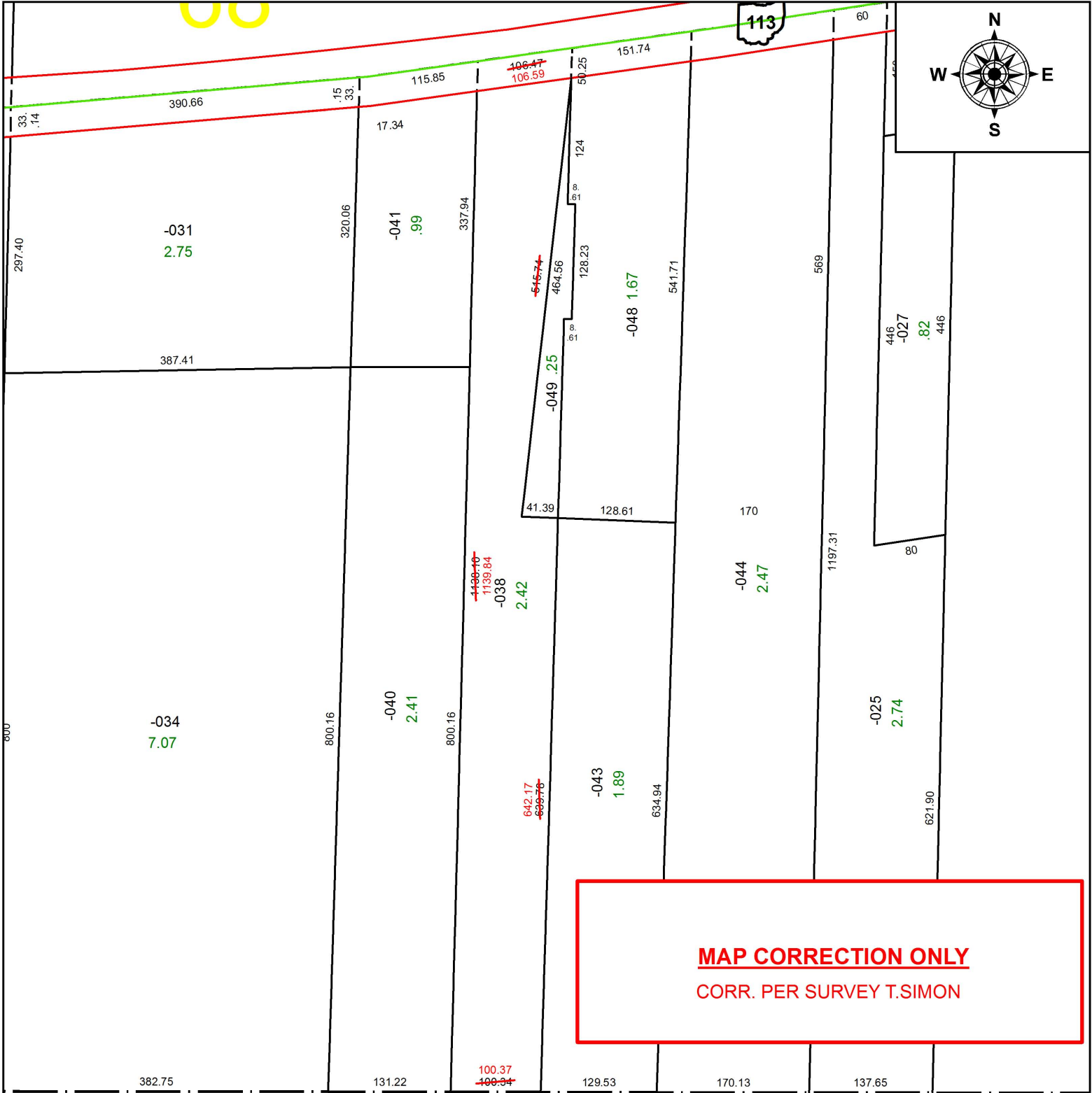


PARENT PARCEL: 05-00-068-000-038

CHILD PARCEL: XX-XX-XXX-XXX-XXX

STARTING POINT: INTERSECTION OF C/L OF TELEGRAPH RD. AND C/L OF OBERLIN RD.

17-03683-D



SPLITS/DEEDS PROCESSED
LORAIN COUNTY TAX MAP DEPARTMENT
226 MIDDLE AVE. ELYRIA, OH

SURVEYED BY:	THOMAS A. SIMON
CLOSURE:	1: 652,934
MAP PAGE(S):	5-00-068
APPROVED BY:	RRM DATE: 5-25-17
SCALE:	1" = 150
PRIOR INSTRUMENT:	20160610227