

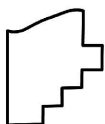
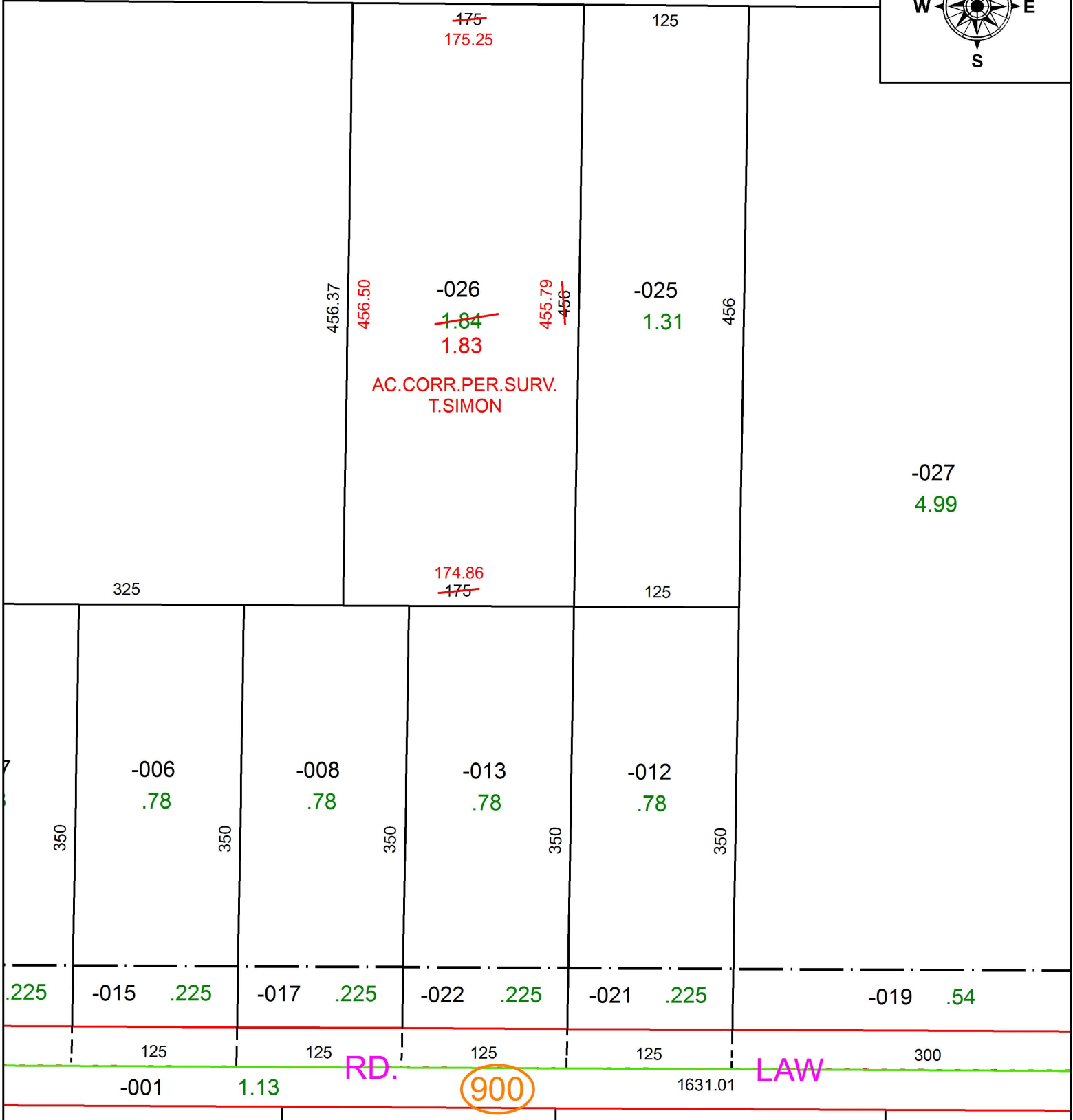
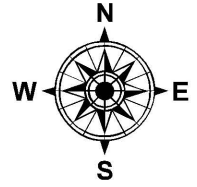
PARENT PARCEL: 16-00-062-000-026

CHILD PARCEL: XX-XX-XXX-XXX-XXX

STARTING POINT: INTERSECTION OF C/L OF LAW RD. AND C/L OF CHAMBERLAIN RD

17-03682-D

2666.78



**SPLITS/DEEDS PROCESSED**  
LORAIN COUNTY TAX MAP DEPARTMENT  
226 MIDDLE AVE. ELYRIA, OH

SURVEYED BY: THOMAS A. SIMON  
CLOSURE: 1: 365,772  
MAP PAGE(S): 16-00-062  
APPROVED BY: RRM DATE: 5-25-17  
SCALE: 1" = 100 PRIOR INSTRUMENT: 20160589722