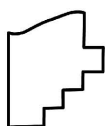
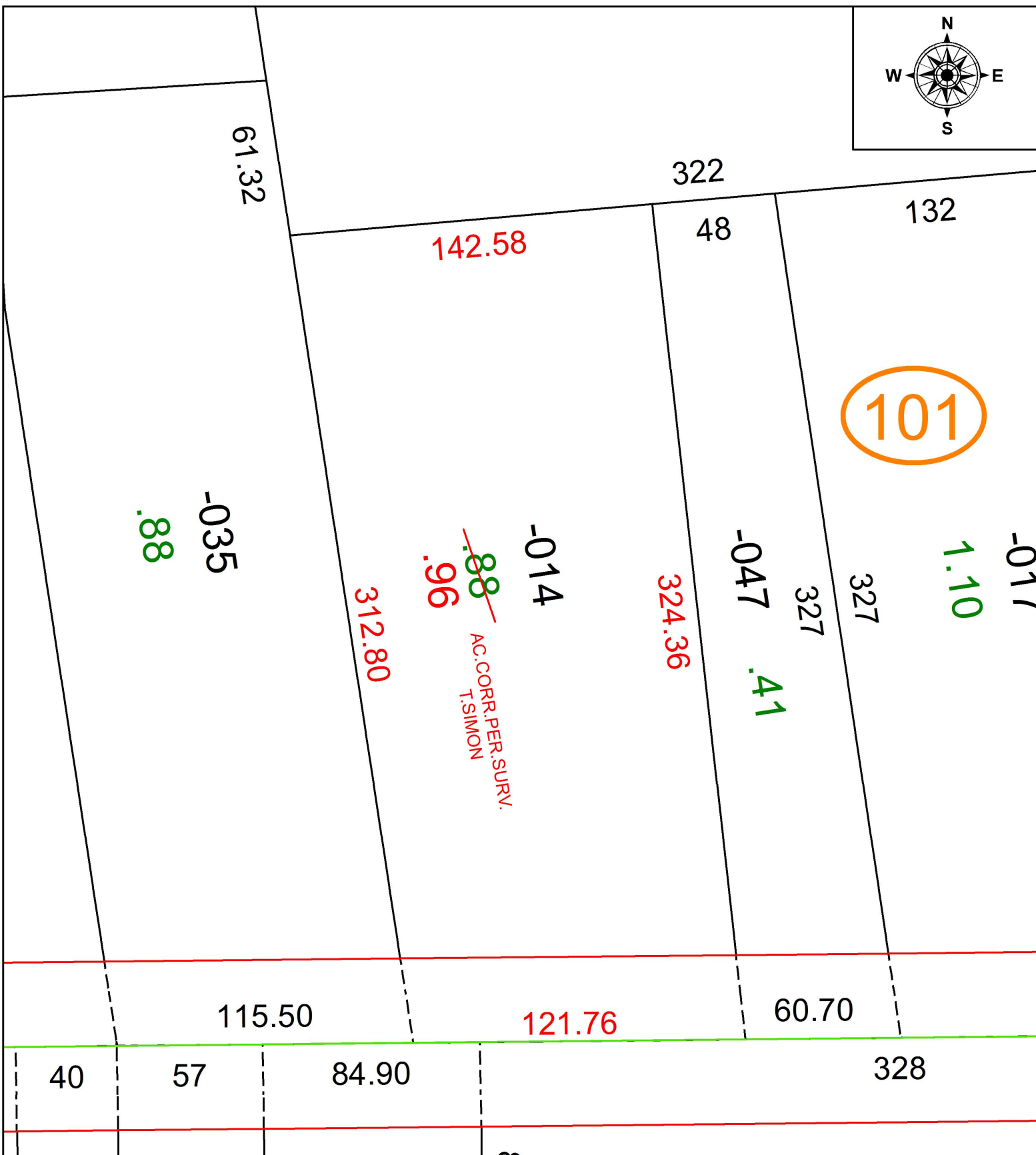
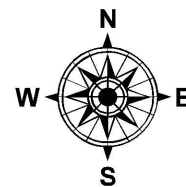


PARENT PARCEL: 05-00-010-101-014

CHILD PARCEL: XX-XX-XXX-XXX-XXX

STARTING POINT: INTERSECTION OF C/L OF WEST MAIN ST. AND C/L OF S. LAKE ST.

17-03681-D



SPLITS/DEEDS PROCESSED
 LORAIN COUNTY TAX MAP DEPARTMENT
 226 MIDDLE AVE. ELYRIA, OH

SURVEYED BY: THOMAS A. SIMON
 CLOSURE: 1: 177,231
 MAP PAGE(S): 5-00-010
 APPROVED BY: RRM DATE: 5-24-17
 SCALE: 1" = 50' PRIOR INSTRUMENT: 20170625024