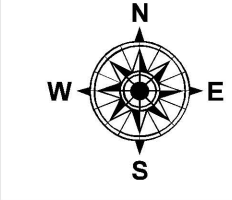
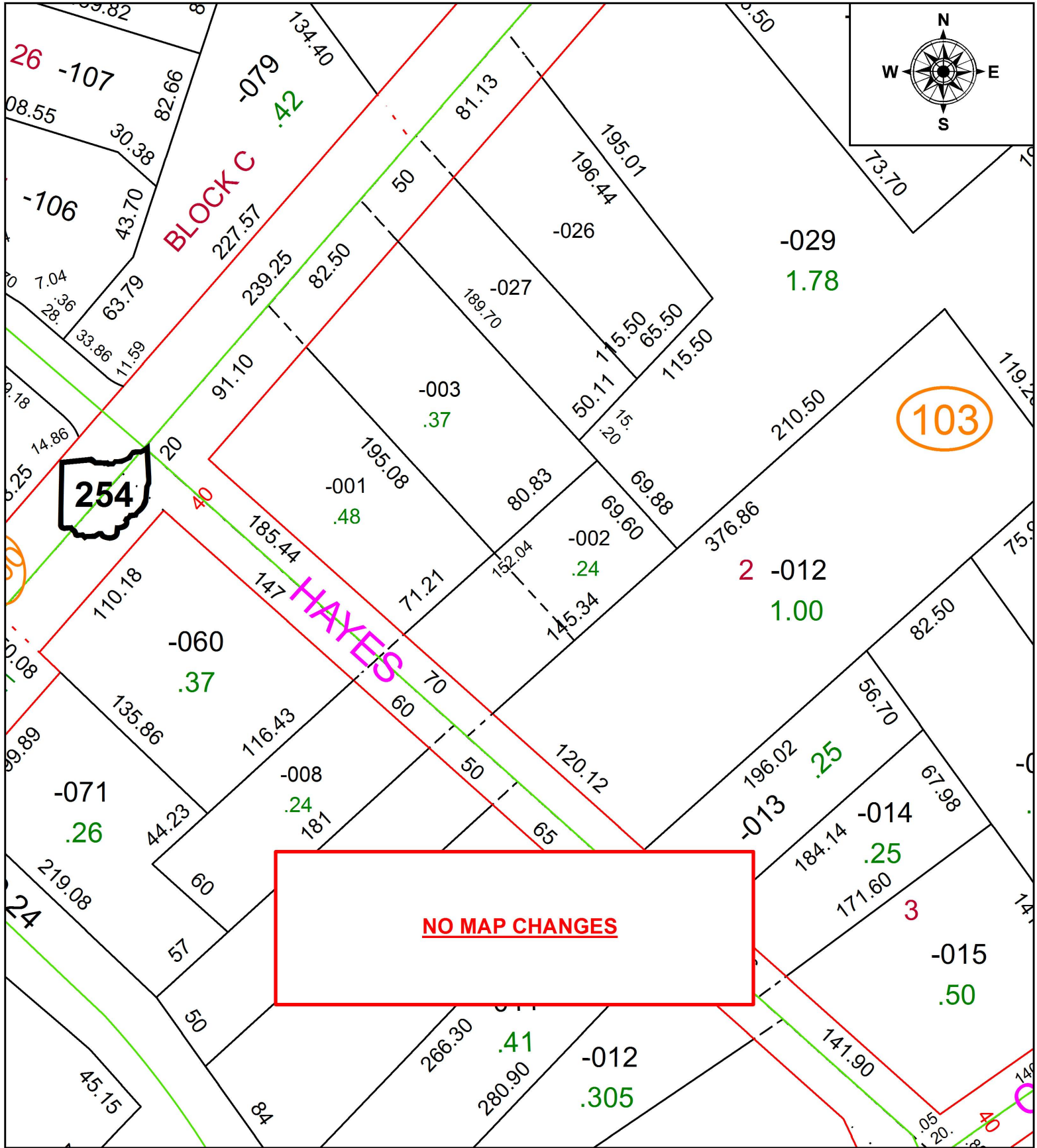


PARENT PARCEL: 04-00-011-103-002

CHILD PARCEL: XX-XX-XXX-XXX-XXX

STARTING POINT: INTERSECTION OF C/L OF S.R. 254 AND C/L OF HAYES ST.

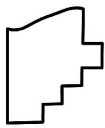
17-03679-D



**254**

**103**

**NO MAP CHANGES**



**SPLITS/DEEDS PROCESSED**  
 LORAIN COUNTY TAX MAP DEPARTMENT  
 226 MIDDLE AVE. ELYRIA, OH

SURVEYED BY: SEAN A. BOLAND  
 CLOSURE: 1: 1,229,839  
 MAP PAGE(S): 04-00-011  
 APPROVED BY: RRM DATE: 5-23-17  
 SCALE: 1" = 75' PRIOR INSTRUMENT: 20120425816