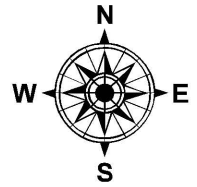


PARENT PARCEL: 02-01-003-120-027, -028, -029

CHILD PARCEL: 02-01-003-120-041 THRU -044

STARTING POINT: INTERSECTION OF C/L OF 10TH ST. AND WEST LINE OF O.L.3

17-03678



**SPLIT**

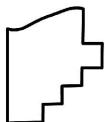
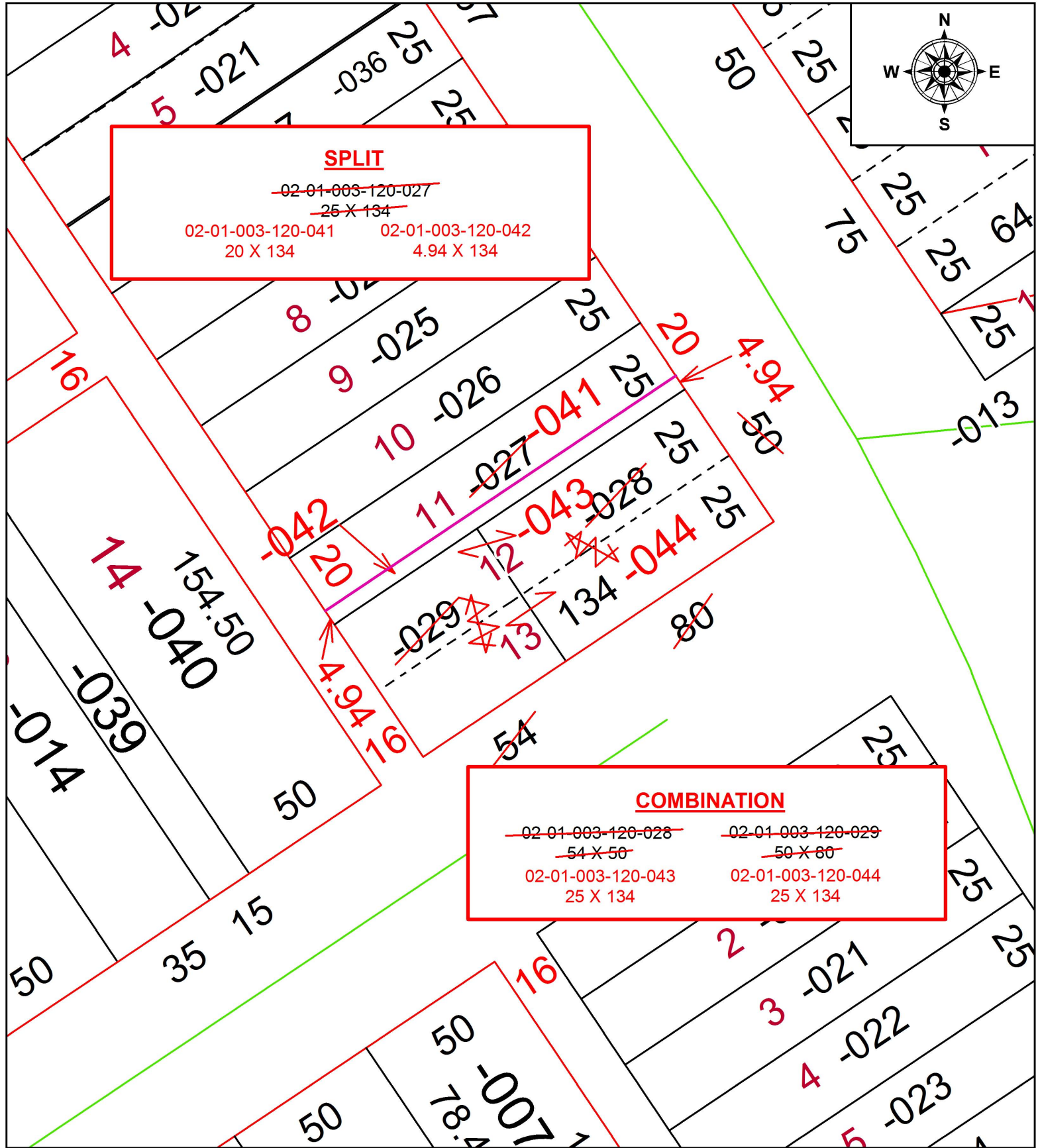
~~02-01-003-120-027~~  
~~25 X 134~~

02-01-003-120-041      02-01-003-120-042  
 20 X 134                      4.94 X 134

**COMBINATION**

~~02-01-003-120-028~~      ~~02-01-003-120-029~~  
~~54 X 50~~                      ~~50 X 80~~

02-01-003-120-043      02-01-003-120-044  
 25 X 134                      25 X 134



**SPLITS/DEEDS PROCESSED**  
 LORAIN COUNTY TAX MAP DEPARTMENT  
 226 MIDDLE AVE. ELYRIA, OH

SURVEYED BY: ROBERT A. DORNER  
 CLOSURE: 1: 2147483648  
 MAP PAGE(S): 2-01-003  
 APPROVED BY: RRM      DATE: 6-19-17  
 SCALE: 1" = 40'      PRIOR INSTRUMENT: DV 1427/749