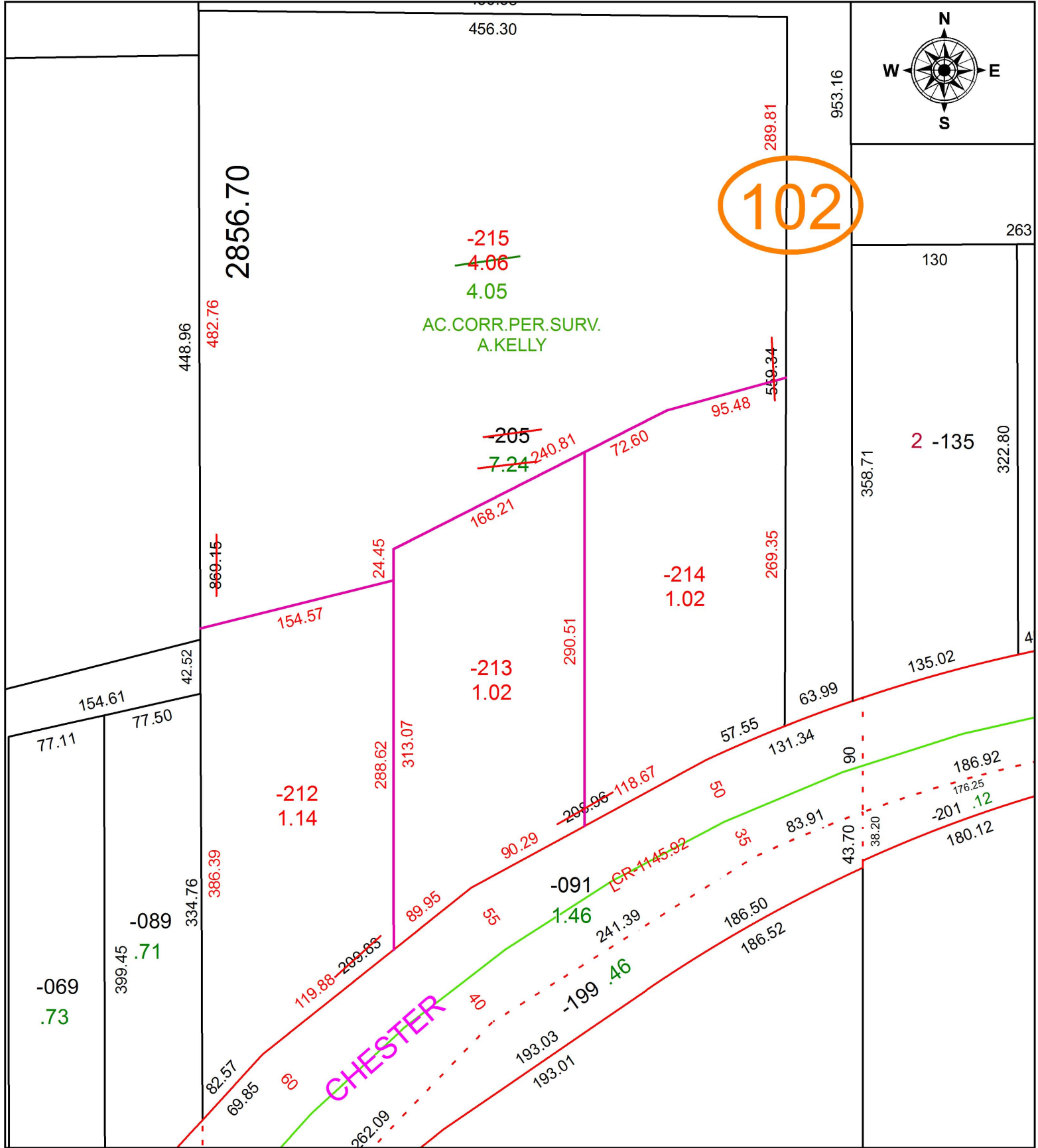


PARENT PARCEL: 04-00-004-102-205

CHILD PARCEL: 04-00-004-102-212 THRU -215

STARTING POINT: INTERSECTION OF C/L OF CHESTER RD. AND C/L OF S.R.611

17-03677



**SPLITS/DEEDS PROCESSED**  
 LORAIN COUNTY TAX MAP DEPARTMENT  
 226 MIDDLE AVE. ELYRIA, OH

SURVEYED BY: AMY M. KELLY  
 CLOSURE: 1: 1,147,835  
 MAP PAGE(S): 4-00-004  
 APPROVED BY: RRM DATE: 6-12-17  
 SCALE: 1" = 100 PRIOR INSTRUMENT: 20160580592