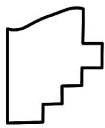
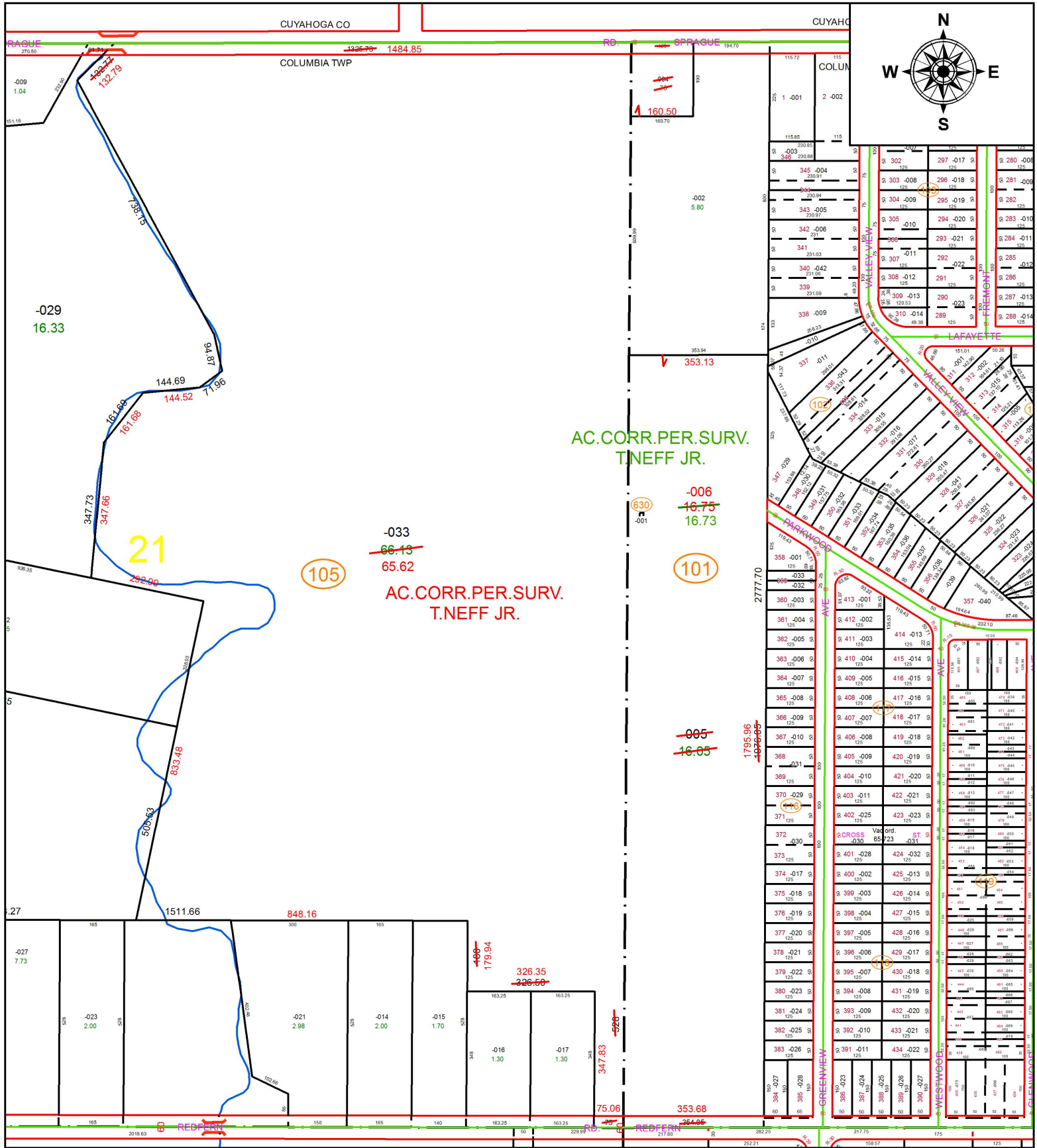


PARENT PARCEL: 12-00-020-101-004, -005, 12-00-021-105-033

CHILD PARCEL: 12-00-020-101-006, 12-00-021-105-033

STARTING POINT: INTERSECTION OF S.R.252 AND C/L OF SPRAGUE RD.

17-03675-D



SPLITS/DEEDS PROCESSED
 LORAIN COUNTY TAX MAP DEPARTMENT
 226 MIDDLE AVE. ELYRIA, OH

SURVEYED BY: THOMAS J. NEFF JR.
CLOSURE: 1: 1,045,352
MAP PAGE(S): 12-00-020
APPROVED BY: RRM **DATE:** 5-23-17
SCALE: 1" = 325 **PRIOR INSTRUMENT:** 20120434918