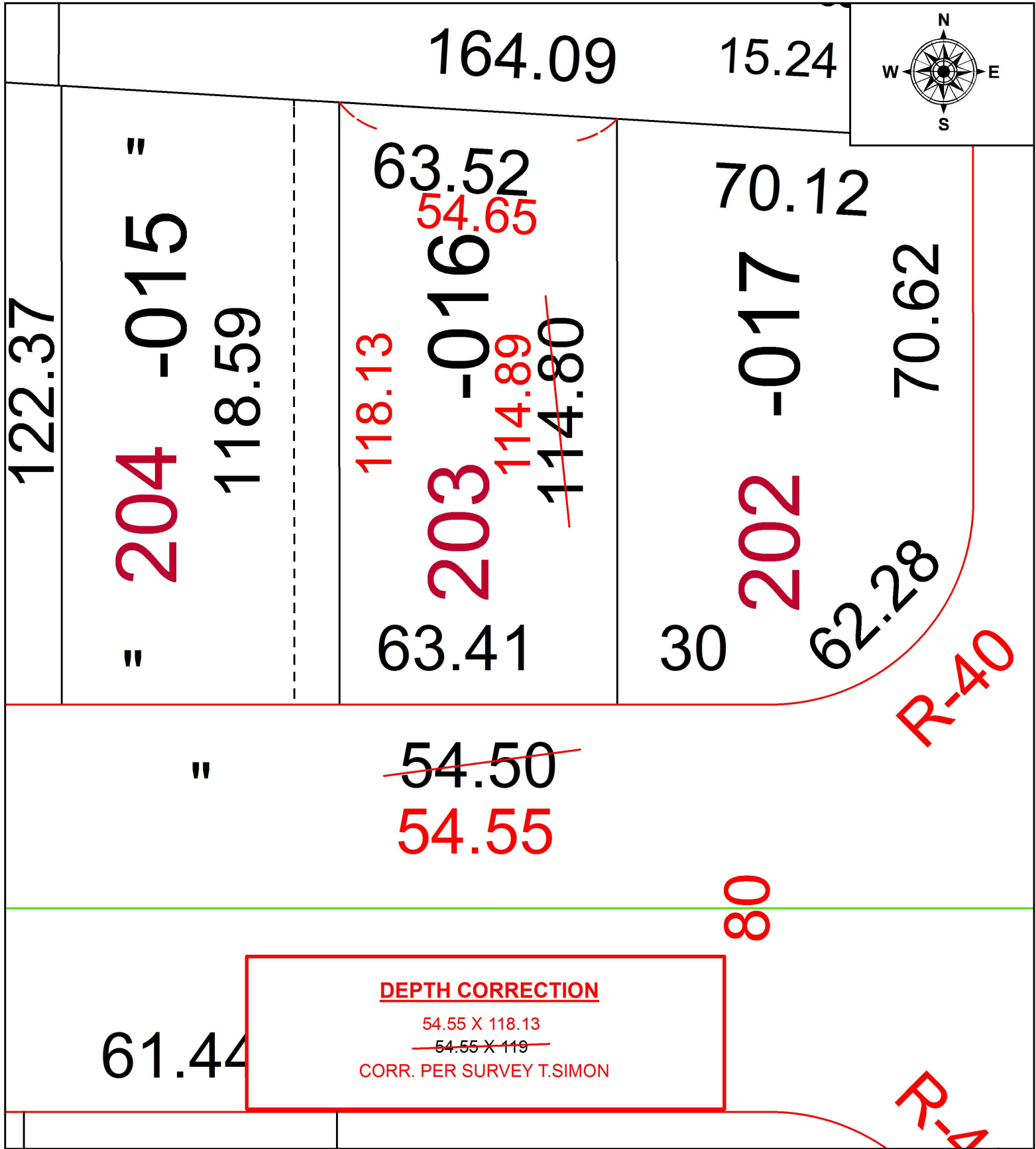


PARENT PARCEL: 06-25-028-101-016

CHILD PARCEL: XX-XX-XXX-XXX-XXX

STARTING POINT: SOUTHWEST CORNER OF S/L 202

17-03673-D



SPLITS/DEEDS PROCESSED
LORAIN COUNTY TAX MAP DEPARTMENT
226 MIDDLE AVE. ELYRIA, OH

SURVEYED BY: THOMAS A. SIMON
CLOSURE: 1: 88,534
MAP PAGE(S): 6-53
APPROVED BY: RRM DATE: 5-17-17
SCALE: 1" = 125 PRIOR INSTRUMENT: 20170625451