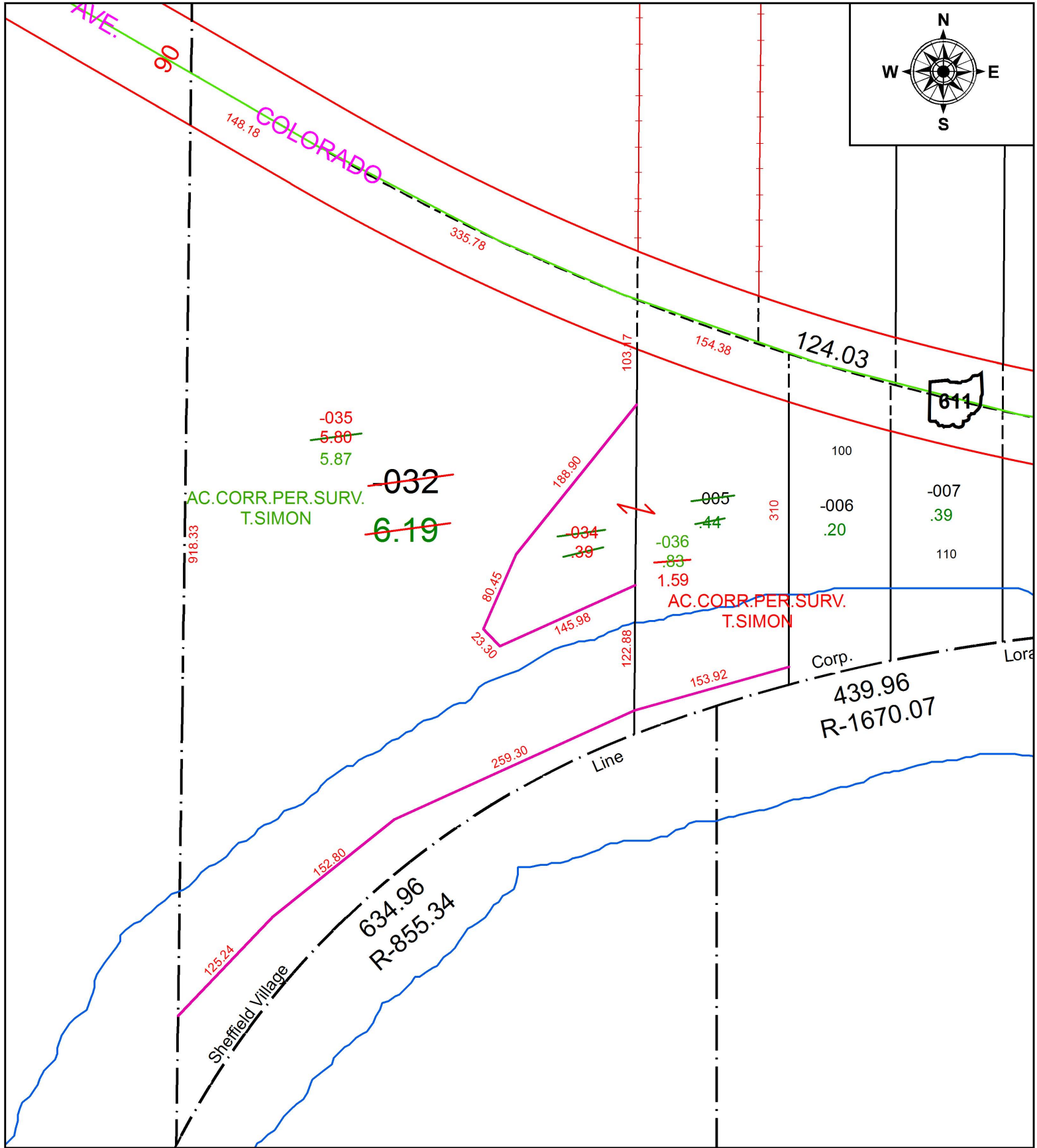
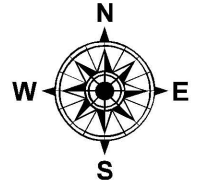


PARENT PARCEL: 03-00-059-000-005, -032

CHILD PARCEL: 03-00-059-000-034 THRU -036

STARTING POINT: INTERSECTION OF C/L OF S.R. 611 AND C/L OF ROOT RD.

17-03672

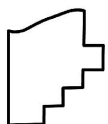


~~-035~~
~~5.80~~
5.87
~~032~~
6.19
AC.CORR.PER.SURV.
T.SIMON

~~005~~
~~.44~~
~~034~~
~~.39~~
~~036~~
~~.83~~
1.59
AC.CORR.PER.SURV.
T.SIMON

Corp.
439.96
R-1670.07

634.96
R-855.34



SPLITS/DEEDS PROCESSED
LORAIN COUNTY TAX MAP DEPARTMENT
226 MIDDLE AVE. ELYRIA, OH

SURVEYED BY: THOMAS A. SIMON
CLOSURE: 1: 109,667
MAP PAGE(S): 3-00-059
APPROVED BY: RRM DATE: 5-18-17
SCALE: 1" = 125 PRIOR INSTRUMENT: 20040023525